

Fix your Fireplace



BI-DEEP-XT

Amantii
Electric Fireplaces

Content

- [How to replace LED light](#)
- [How to replace flicker motor](#)
- [How to replace heating element](#)
- [How to replace the PCB board](#)
- [How to replace the signal receiver](#)
- [How to replace the top light](#)

Replace LED light

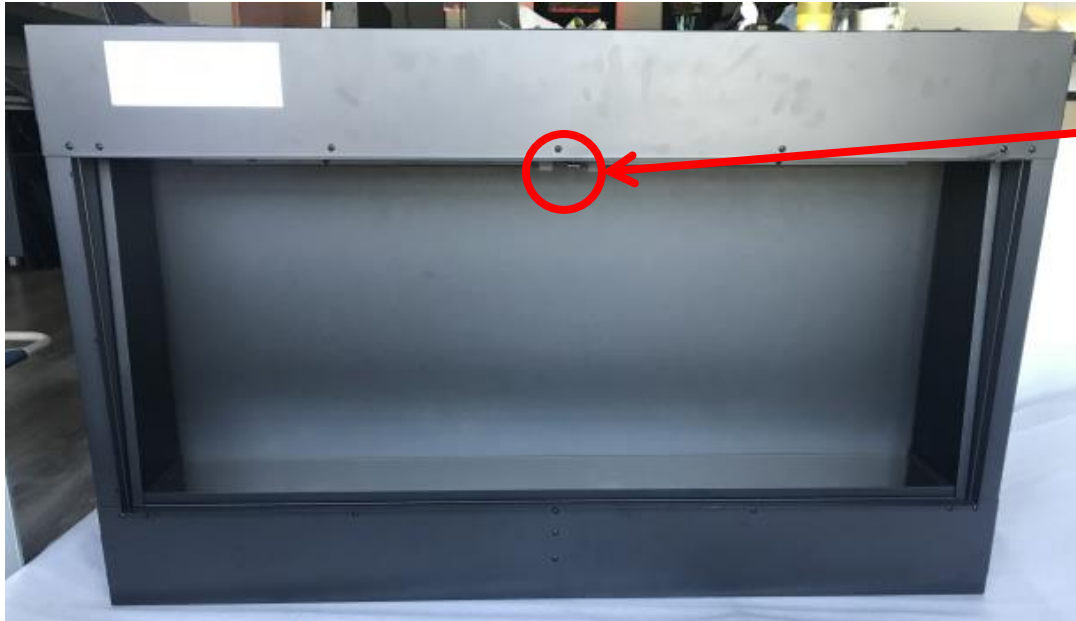
Step 1 Replace ember bed LED light



Remove the trim



Step 2



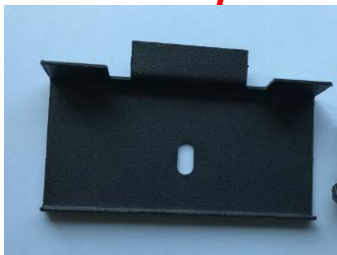
Unscrew the
screw

Unscrew the screw in the middle and then to
get out the front panel.

Step 3



Use the metal piece you just removed from the fireplace to hook and pull out the front glass panel.



Front glass

Step 4

Unscrew one screw on both sides.



Zoomed view

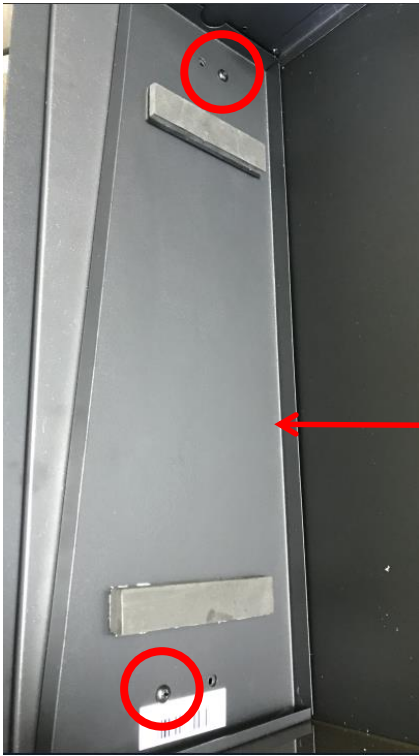


Step 5

Use the metal piece just took off from STEP4 to hook and pull out the side inner black glass panels.



Step 6



Unscrew 2 screws on each side to take off the side inner bars. After the side inner metal panels are removed, the ember bed glass panel can be removed as well.

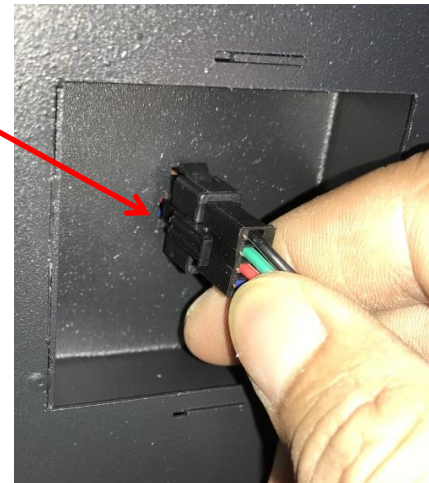
Step 7



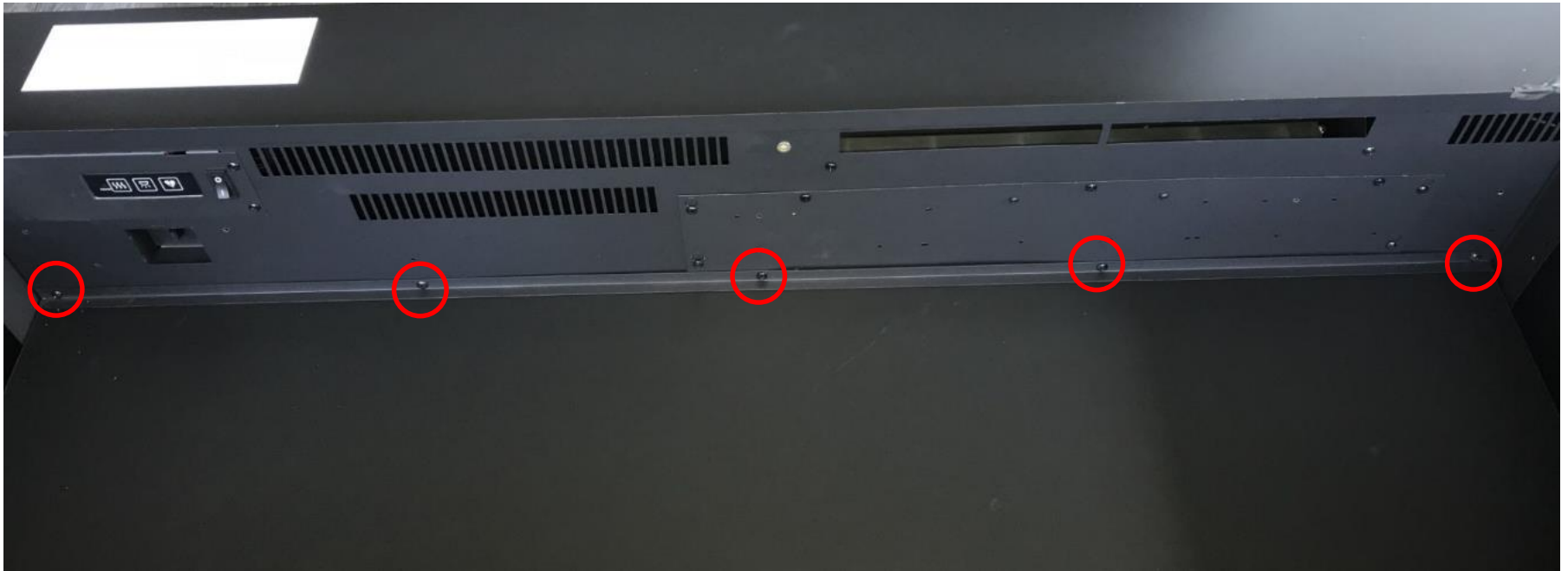
After the ember bed glass panel is removed, now you can replace the LED light for ember bed effect. (Replace flame light see STEP7)



Step 8 Unscrew 3 screws and unplug to take off the top mood light.



Step 9 Unscrew 5 screws to remove the top fending bar for the flame effect glass panel



Step 10

Unscrew 4 screws to take off the flame effect glass panel.





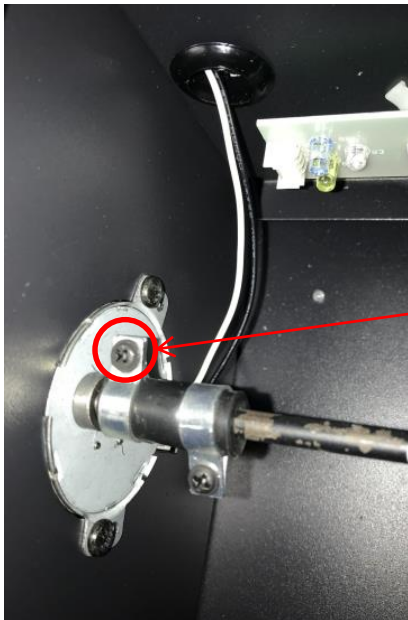
Step 11

Now you can replace flame Effect LED light bars.

Replace the flicker motor

Replace flicker motor for ember bed effect

Please follow Step 1 to 10 in replacing LED light.

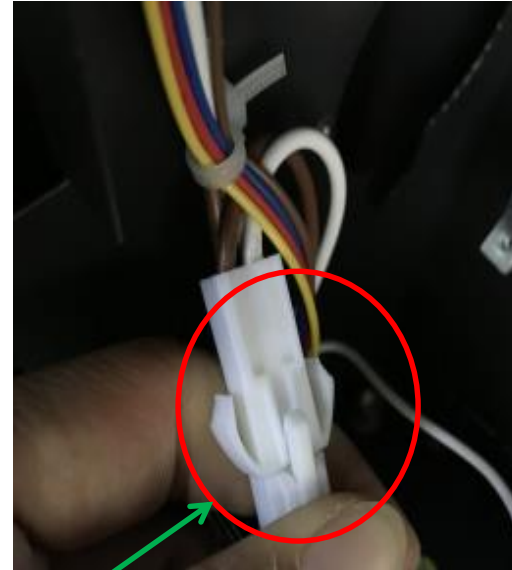
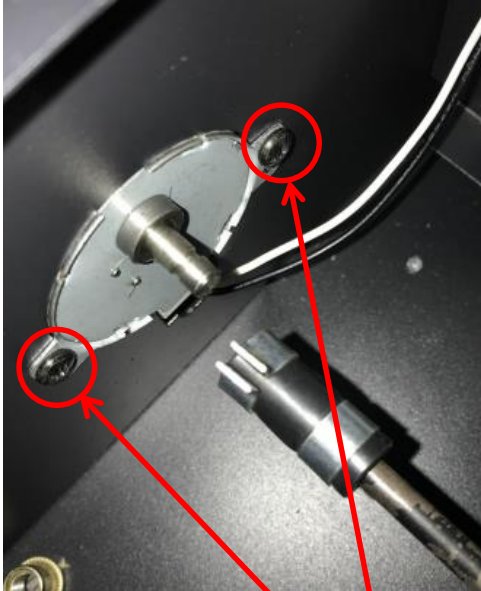


Step 1

Unscrew the screw to disconnect
the flicker rod from the motor



Step 2

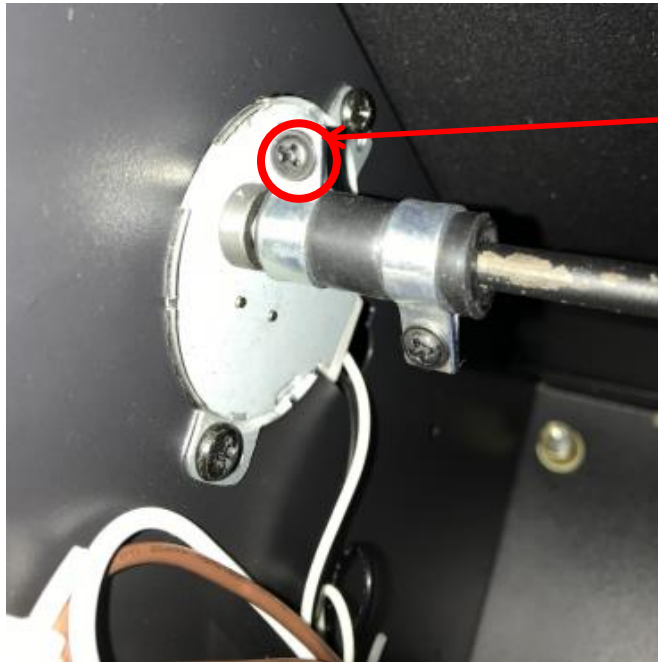


Unscrew 2 screws and unplug to take off the motor.

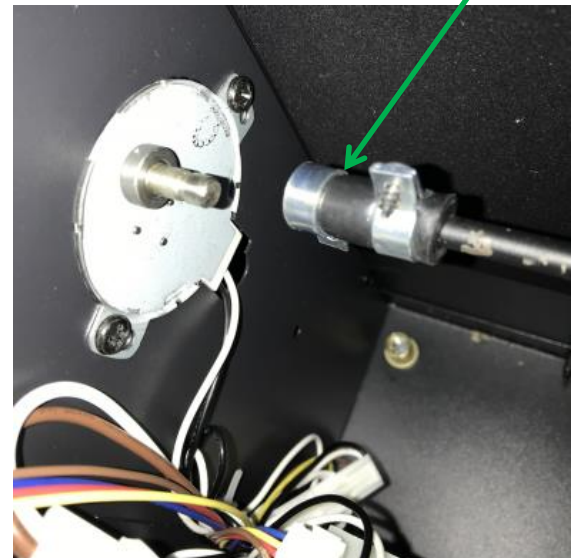
Replace flicker motor for flame effect

The flicker motor for flame effect is behind the visual glass panel.

Step 3

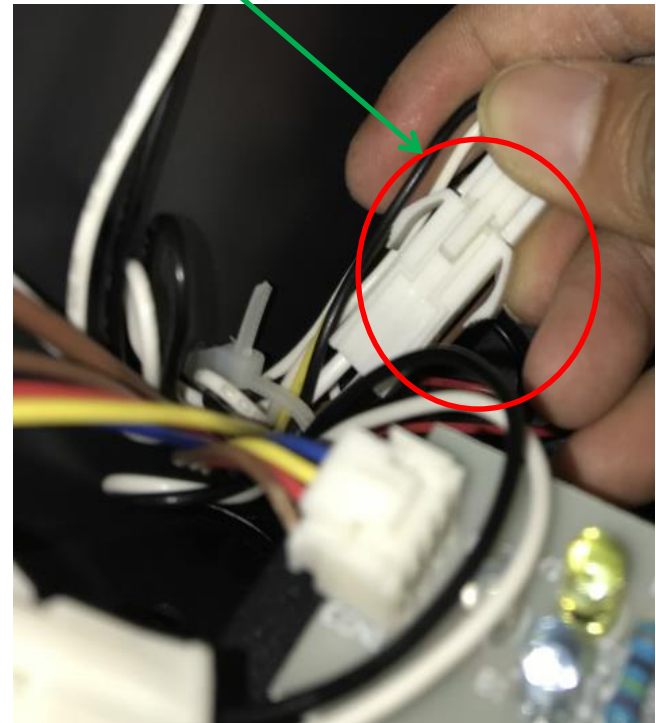
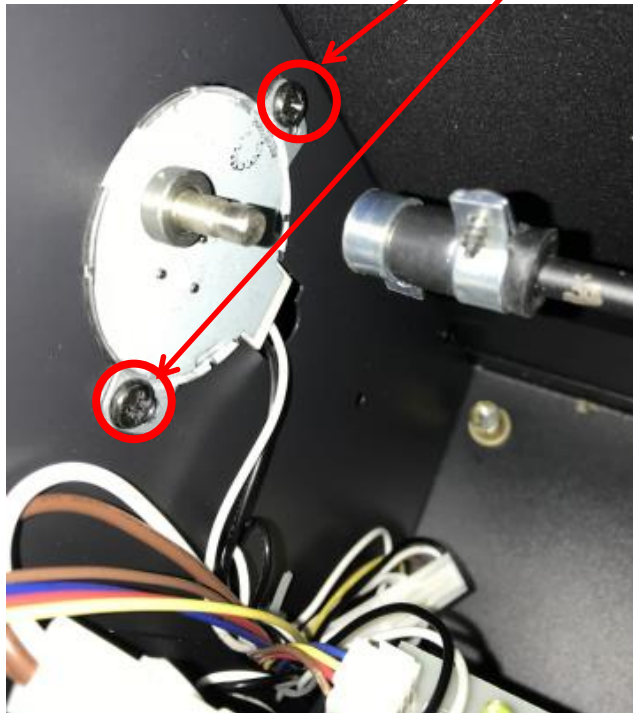


Unscrew the screw and then disconnect the flicker rod from the motor



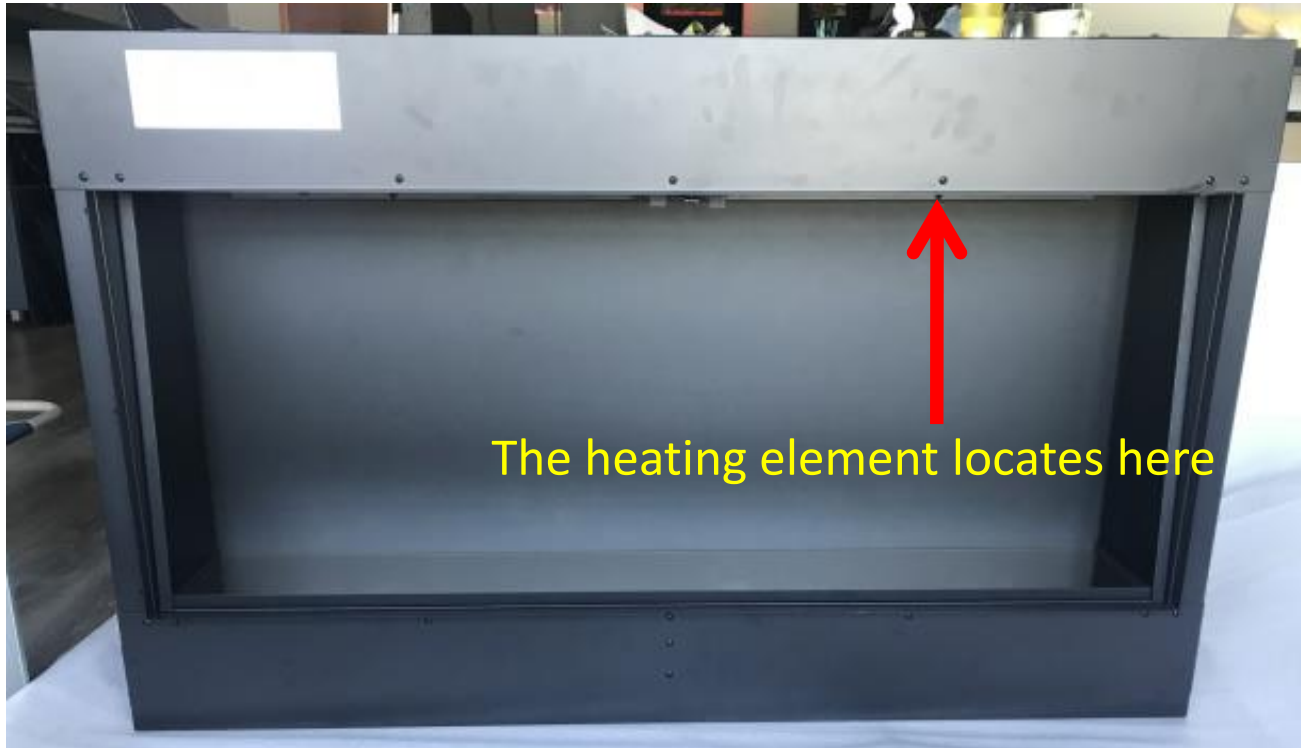
Step 4

Unscrew 2 screws, unplug and now you can replace flicker motor for flame effect.



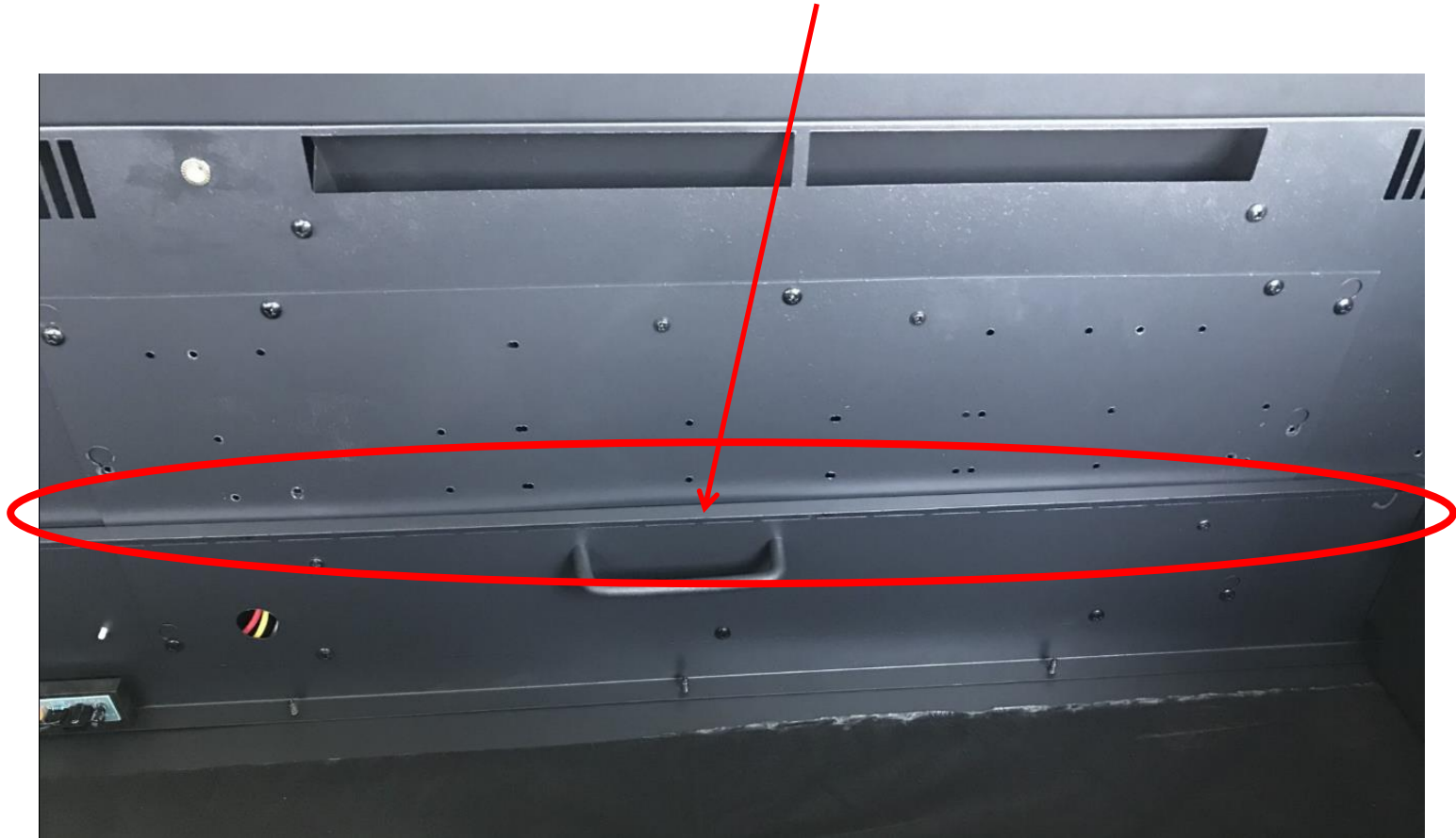
Replace the heating element

Please follow Step 1 to 10 in replacing LED light, you come to here



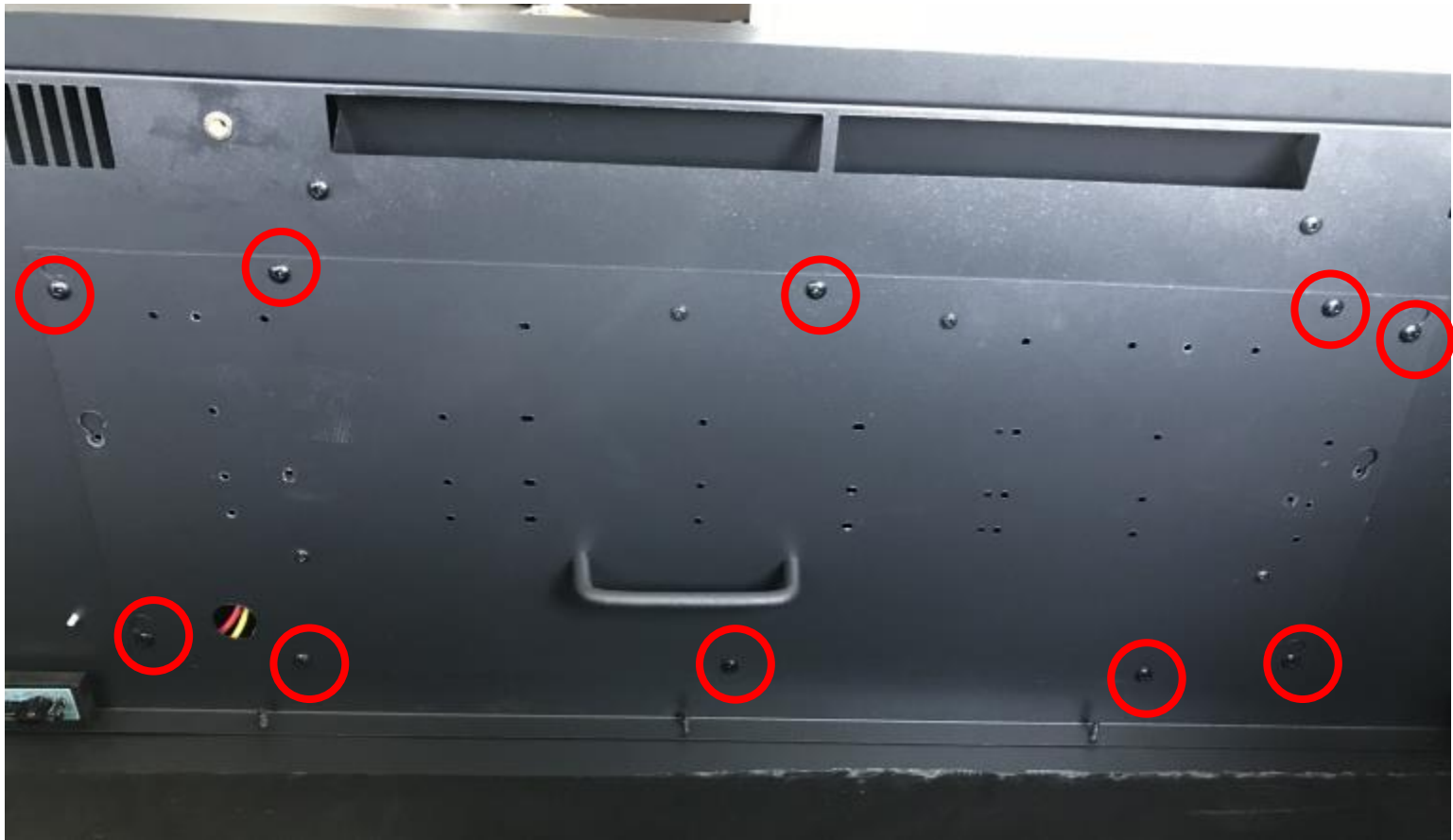
Step 1

Unscrew the screws to take off the holding metal bar for flame effect glass panel.



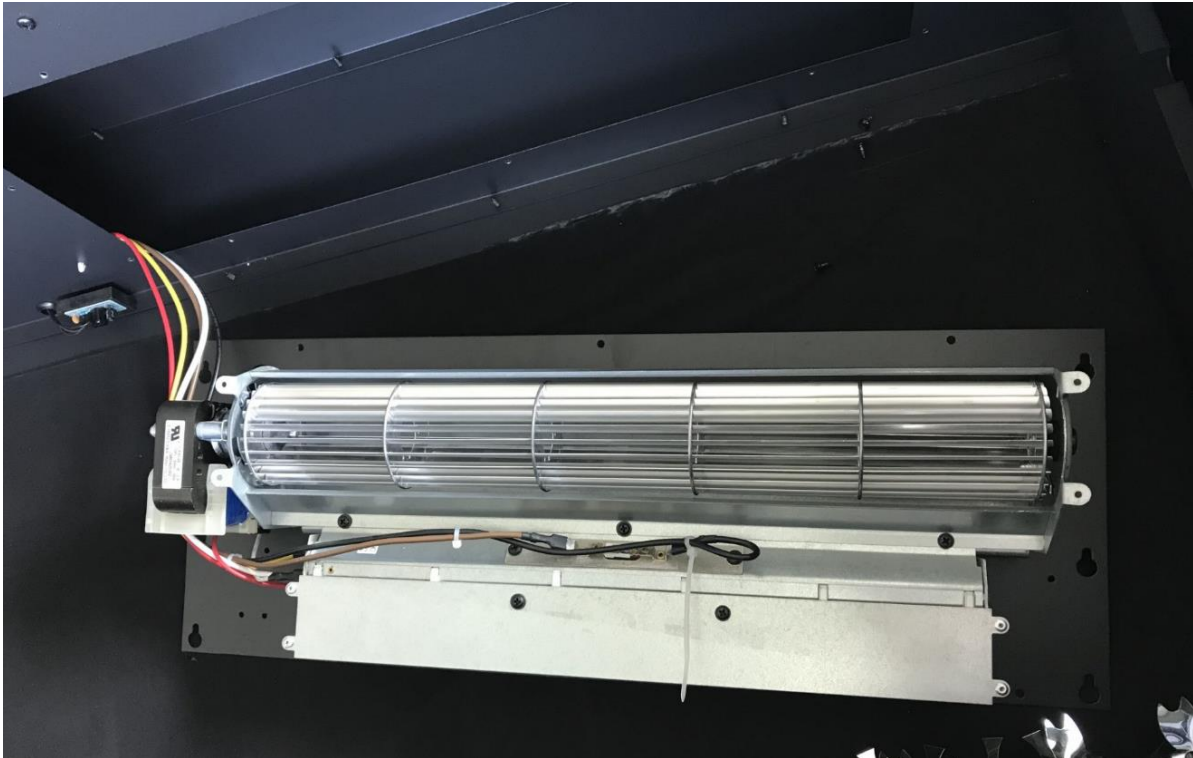
Step 2

Unscrew 10 screws to remove the heating set from the unit.



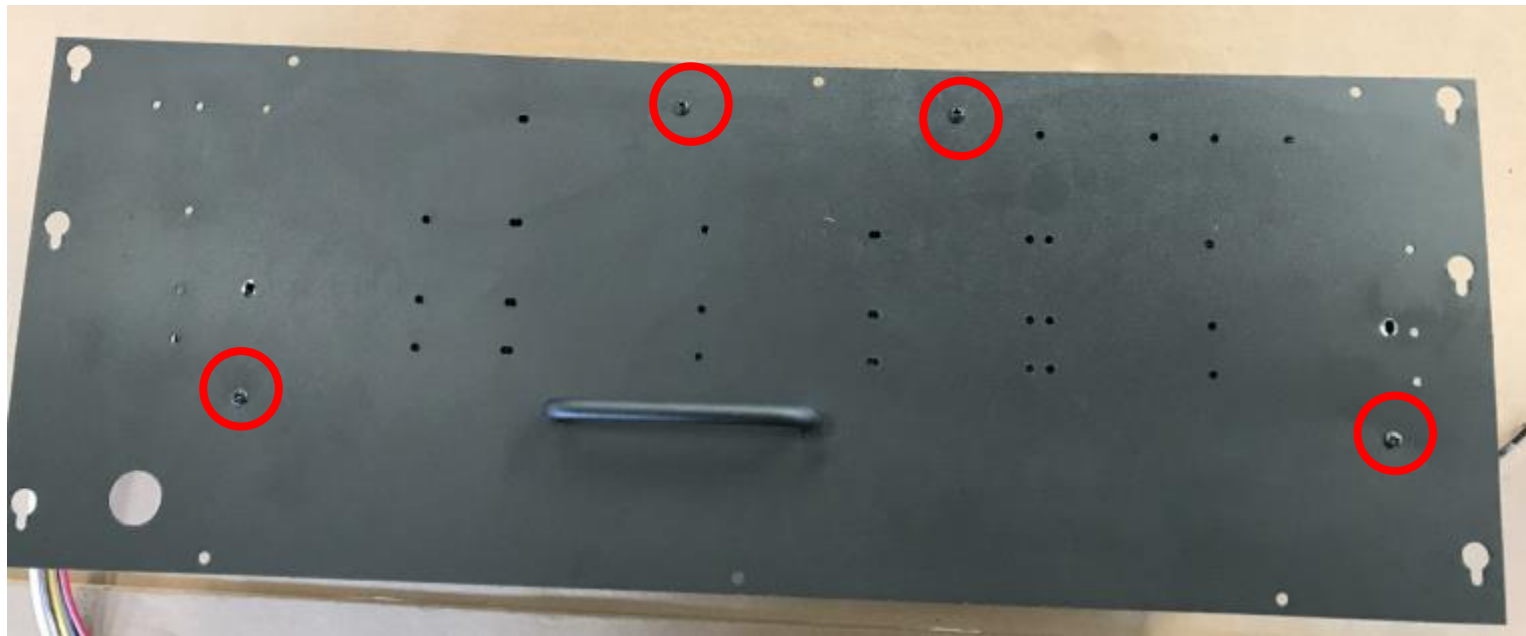
Step 3

After the screws are removed, you can pull out the heating set from the unit.



Step 4

Unplug and you can replace the heater.



Step 5

Unplug to replace the heating element, please note to keep the parts



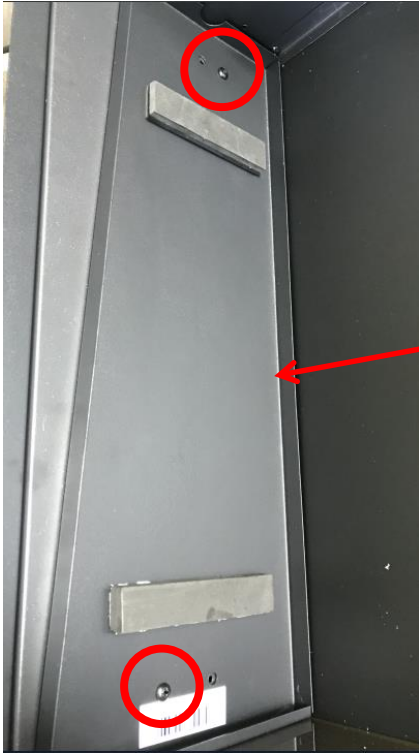
Replace PCB board

Please follow Step 1 to 4 in replacing LED light, you come to here



The PCB board locates here

Step 1



Unscrew 2 screws on left side to take off the side inner panel.

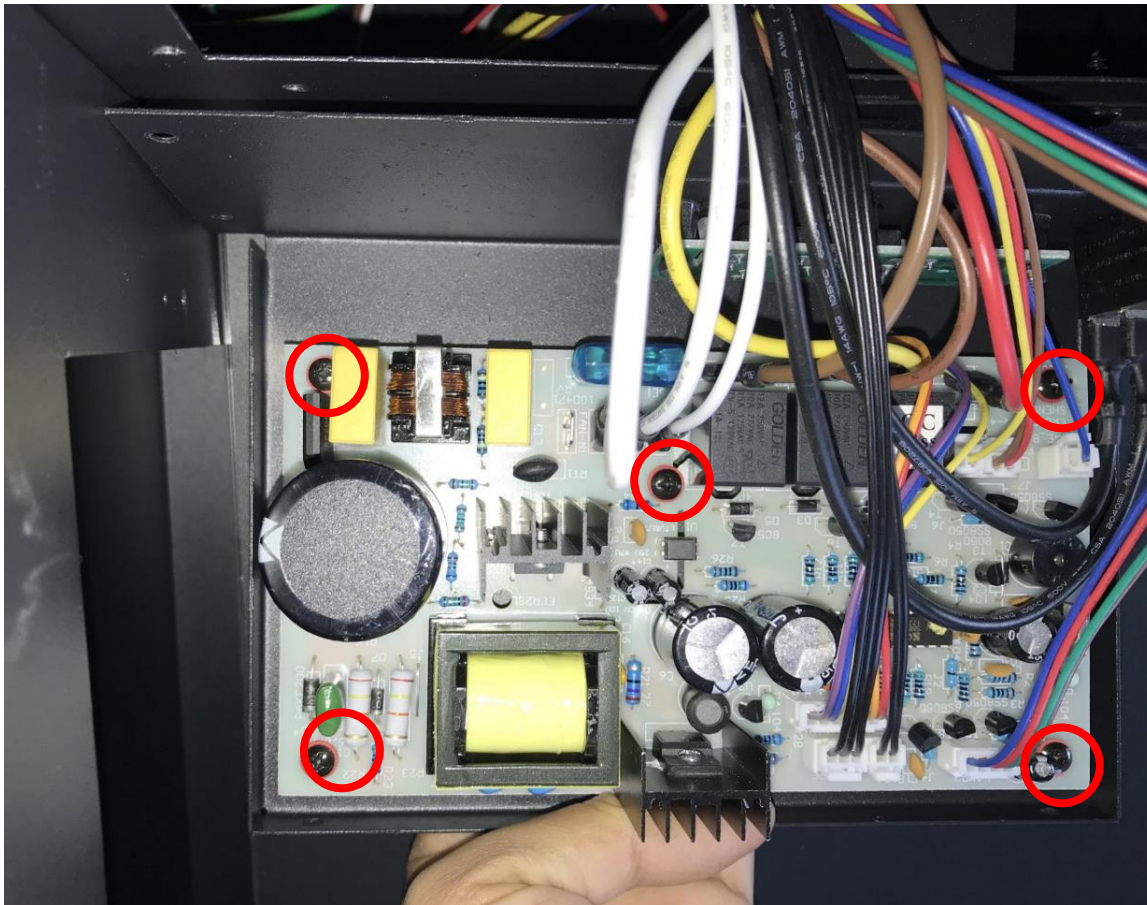
Step 2

Unscrew 4 screws to pull out the PCB board set



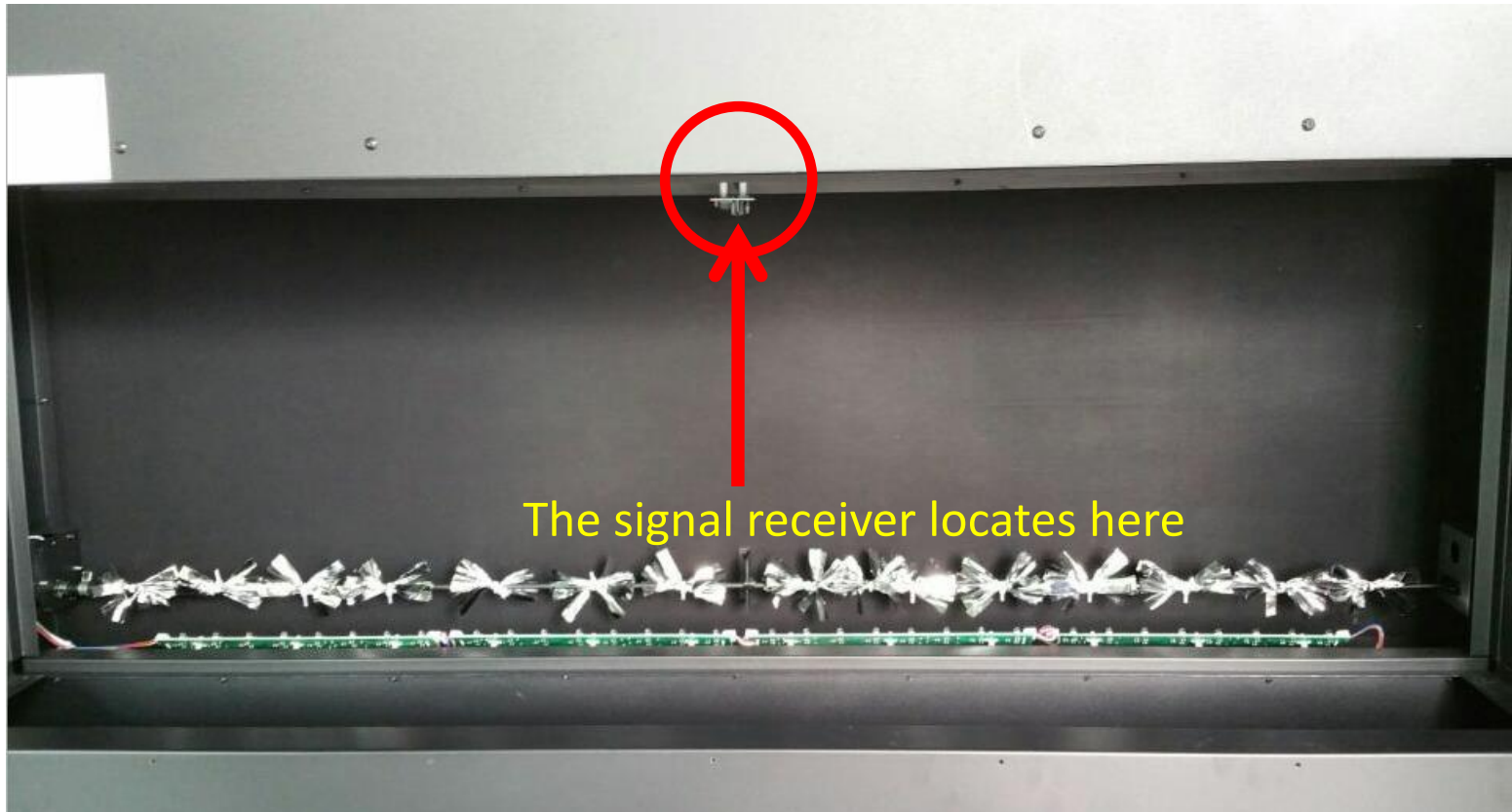
Step 3

Turn around the PCB board set and unscrew the 5 screws to take off the PCB board from the set



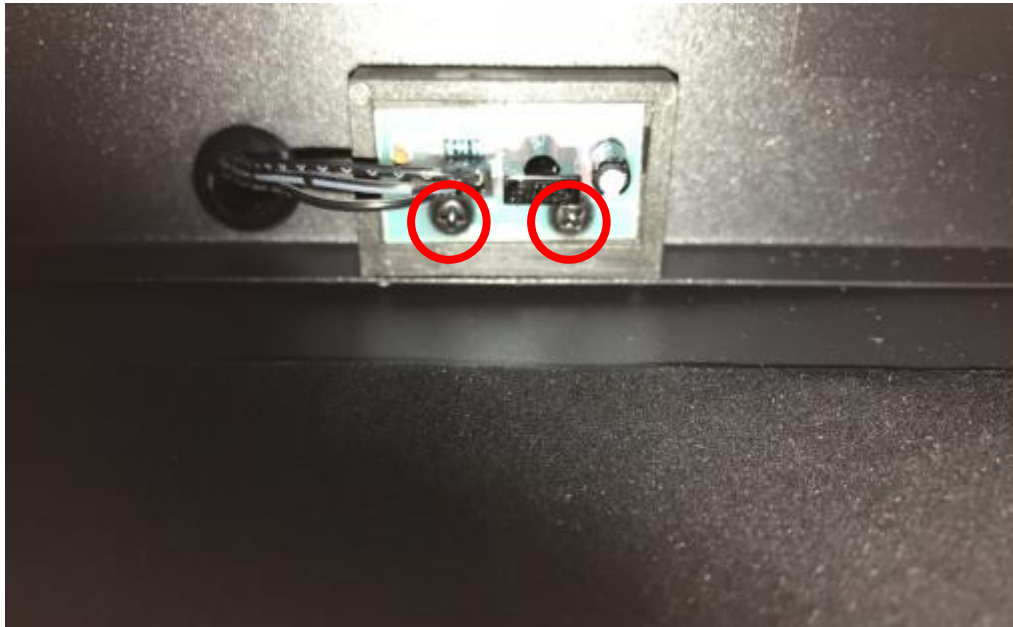
Replace signal receiver

Please follow Step 1 to 10 in replacing LED light, you come to here



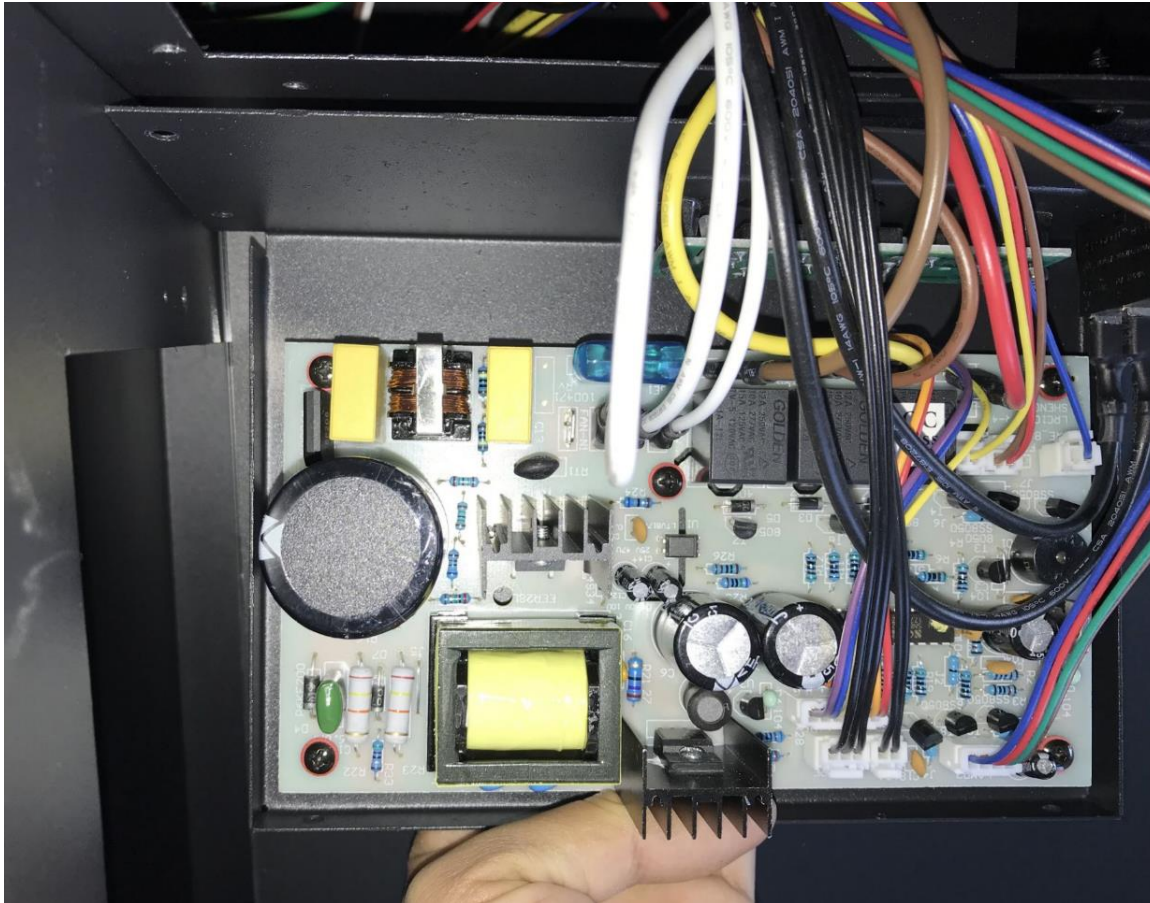
Step 1

Unscrew 2 screws to disconnect the signal receiver from the unit.



Step 2

Please follow Step 1 to 3 in replacing PCB board, you come to here



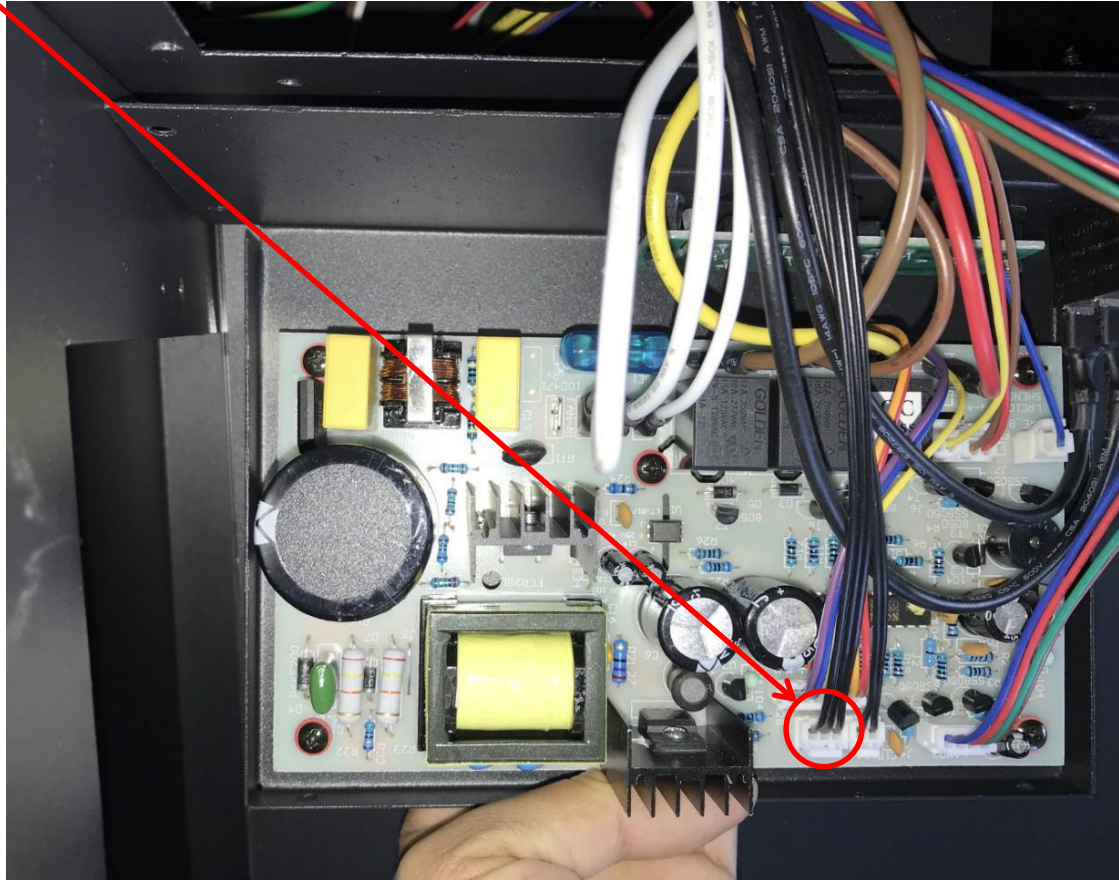
Step 3

Please follow Step 1 to 3 in replacing PCB board, you come to here



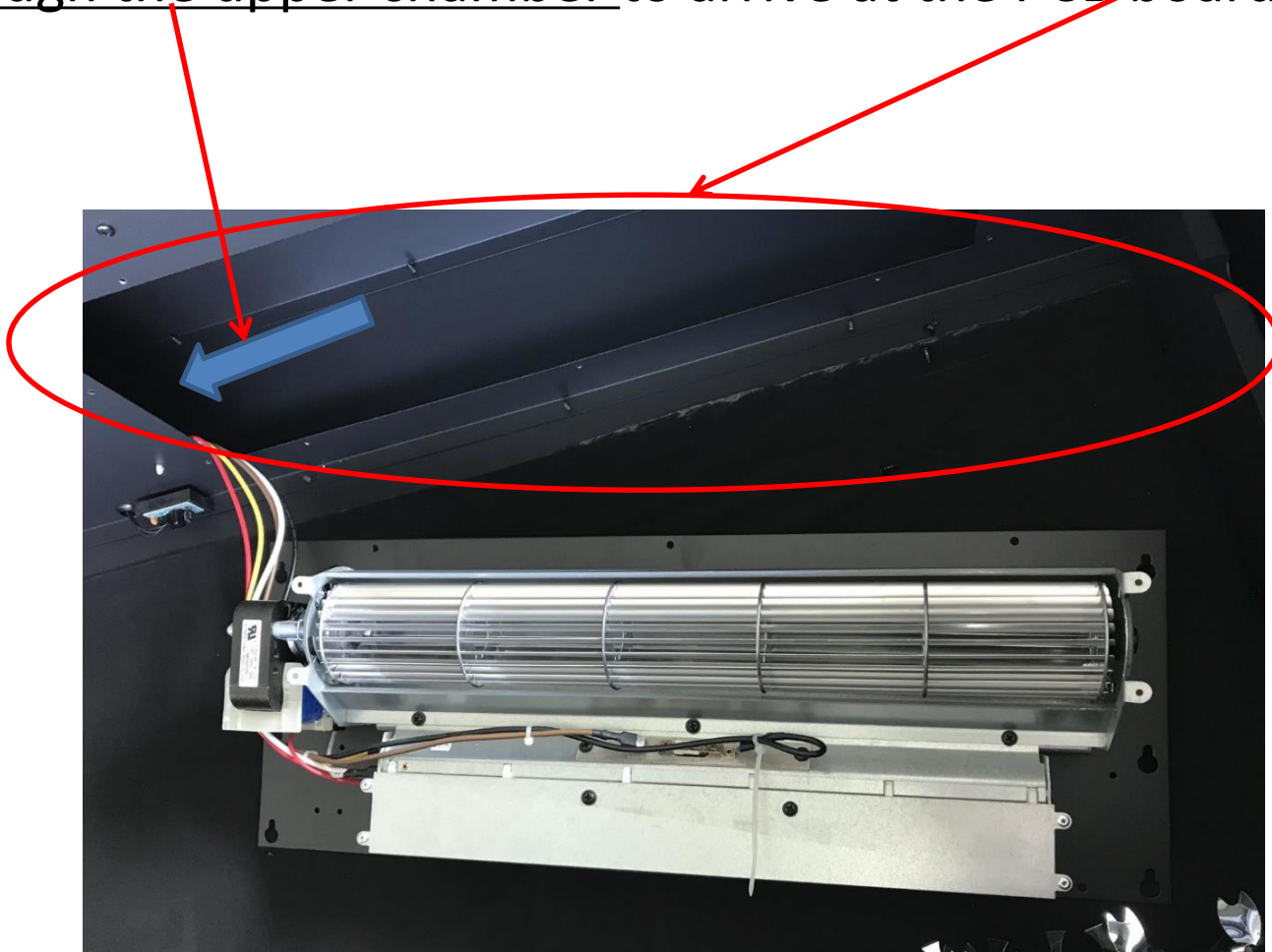
Step 4

Unplug to take off signal receiver from unit.



Step 5

Replace a new signal receiver. You may make the full use of the slot left by the removed heating set to help the wiring of the signal receiver goes through the upper chamber to arrive at the PCB board



Replace top light

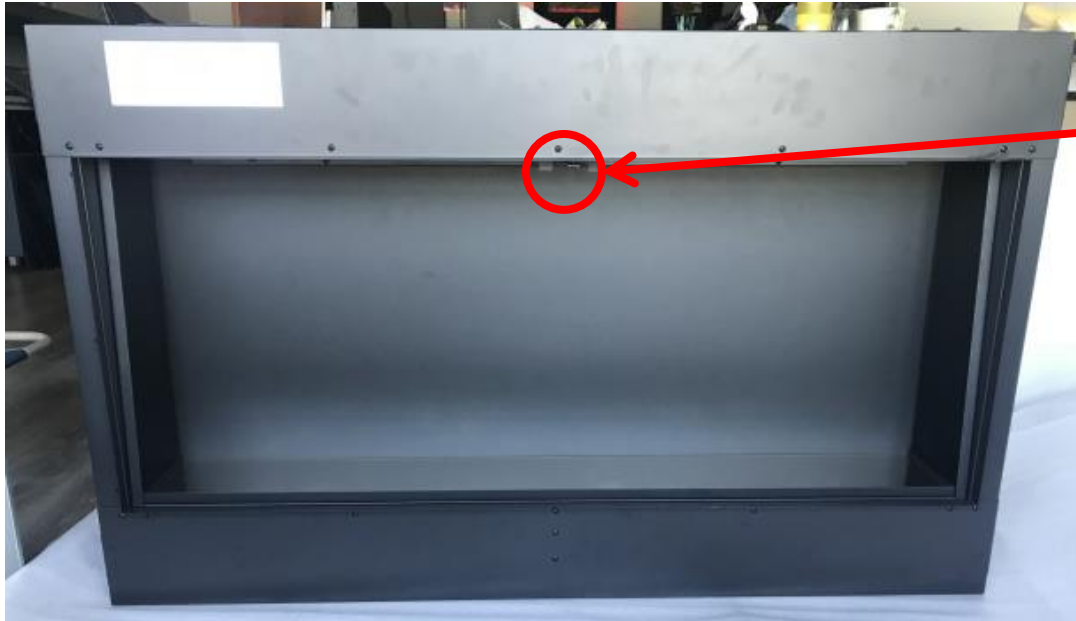
Step 1



Remove the trim



Step 2



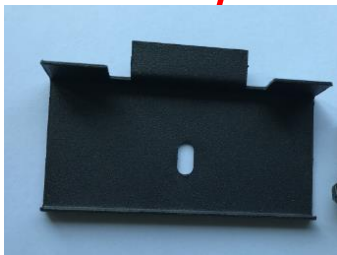
Unscrew the
screw

Unscrew the screw in the middle and then to
get out the front panel.

Step 3



Use the metal piece you just removed from the fireplace to hook and pull out the front glass panel.



Front glass



Step 4 Unscrew 3 screws and unplug to take off the top mood light.

