

Change Flicker Motor



Advanced Series Models:

WM-BI-28-3421-BLKGLS, WM-BI-43-5123-BLKGLS, WM-BI-58-6421-BLKGLS
WM-BI-76-8221-BLKGLS, WM-BI-106-11524-BLKGLS

Amantii

1. Remove the log



Log

Log PCB
position

1. Take out the log carefully.
2. Unplug the log PCB wires.

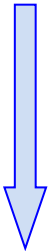
2. Remove front panel and glass



Panel

Remove 7 screws

Take out the front panel and glass



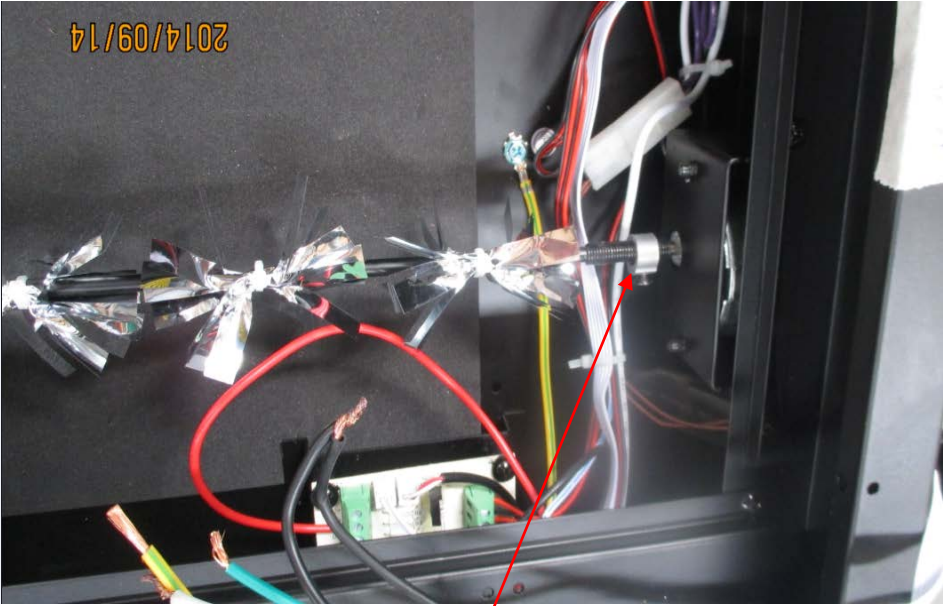
3. Remove color glass



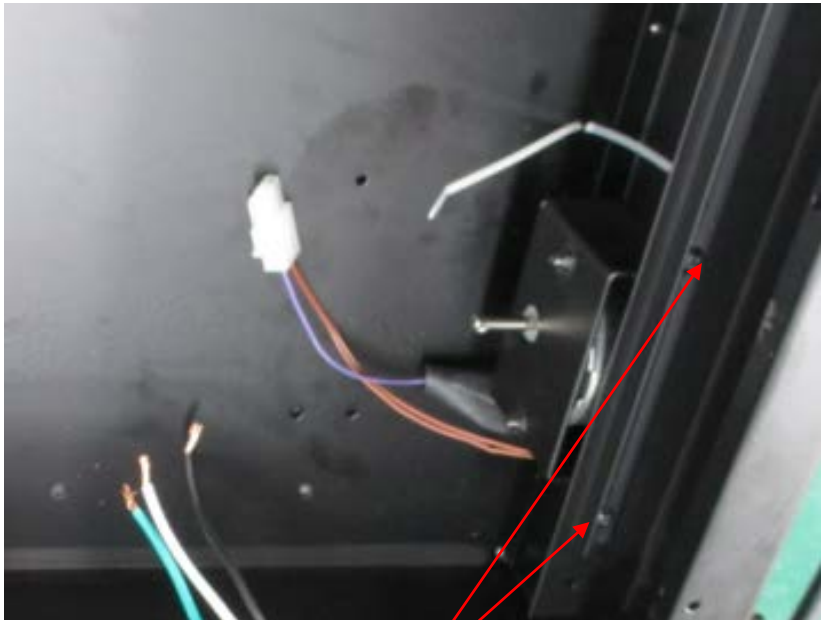
Remove the side cover screws



4. Remove the spindle rod

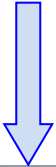
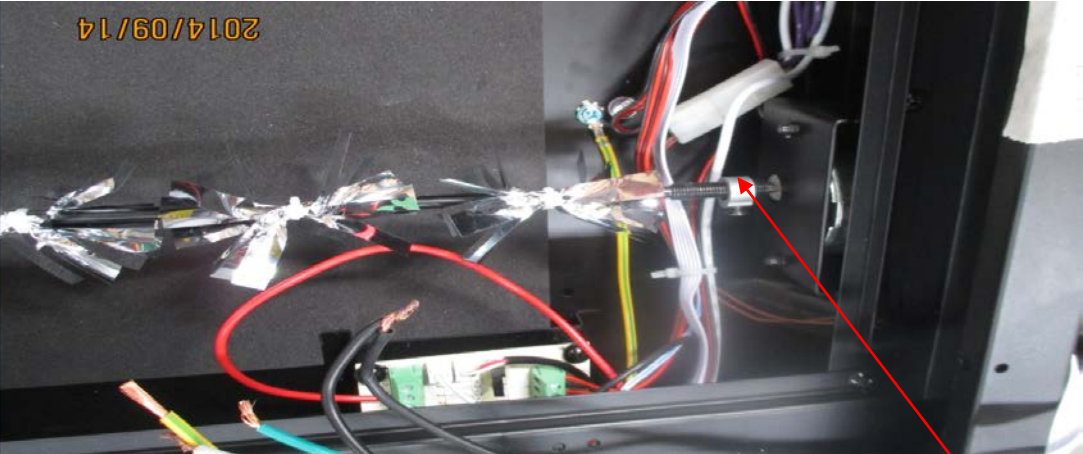


Remove screws



Take out the motor from motor bracket and to change new motor

5. Install back the spindle rod



Put back the screws



Install the side cover screws

6. Install back front panel and glass



Panel

Tighten 7 screws



1. Put back the log.
2. Plug back the log PCB wires.