

Change the flicker motor  
BI-SLIM Panorama Series

*Amantii*



Models: BI-40-SLIM, BI-50-SLIM, BI-60-SLIM, BI-72-SLIM, BI-88-SLIM

1. Remove the front glass and trim:

- Locate screw as shown in top photo, remove screw and gently remove glass



2. Unscrew and remove the right and left bracket.



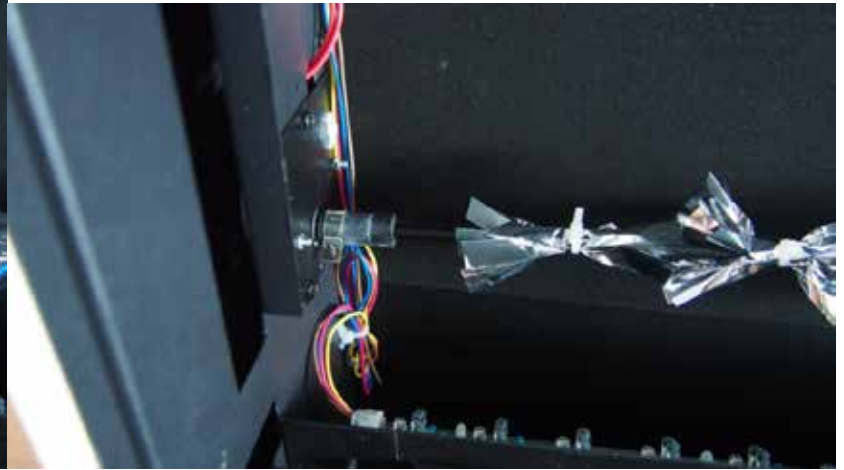
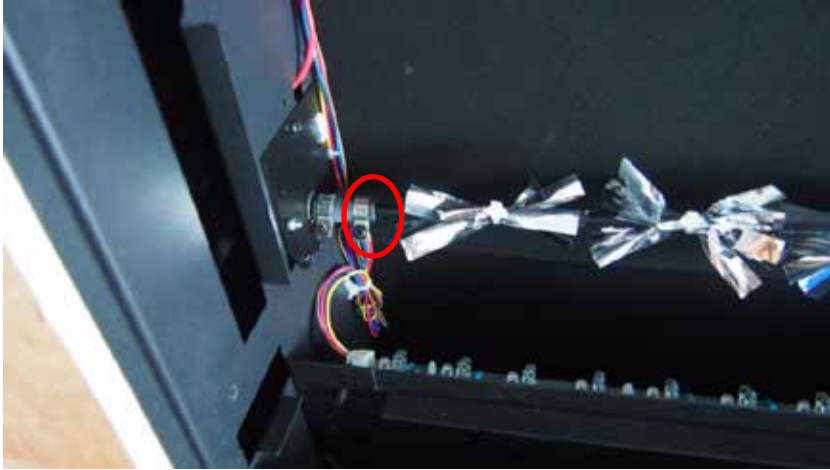
*Amantii*

3. Carefully remove the bottom glass and rear glass as shown below.
- The flicker motor is located on the left hand side.



*Amantii*

4.Remove screws and the flicker assembly as shown below.

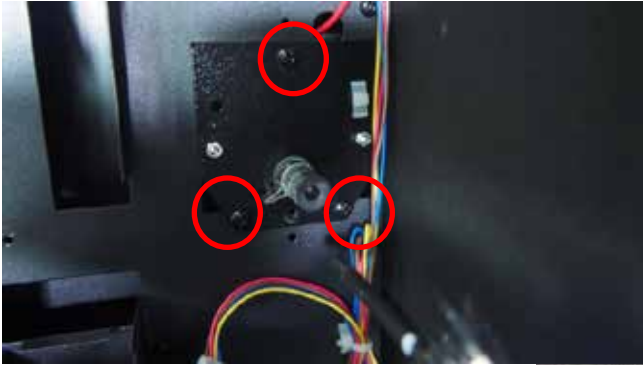


*Amantii*

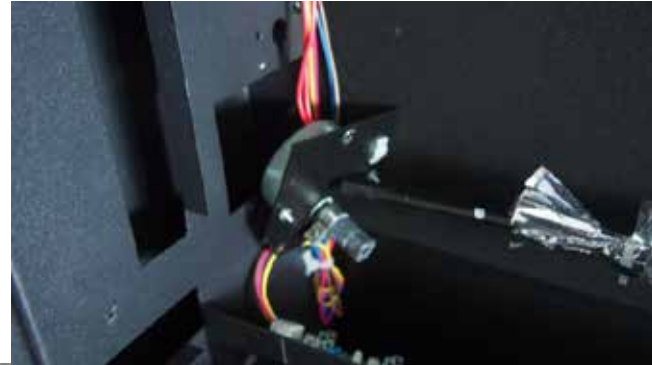
5. Unscrew the flicker motor bracket as shown in images 1 & 2.

- Unplug the wires from the PCB board.
- Replace the motor.
- Reattach the flicker and plug the motor wires back in as shown

1.



2.



*Amantii*

6. Screw all parts including front and bottom glass back carefully.



*Amantii*