



REPLACING CAST IRON PIECES FOR LYNWOOD E50/E70

STEP 1: Remove the cast iron plates from the front trim as shown in the diagram.



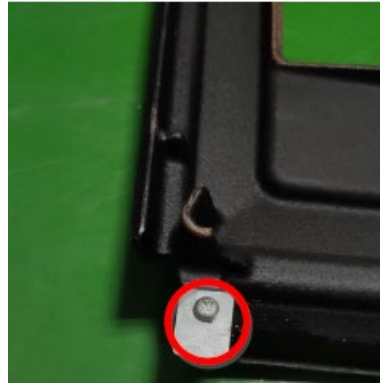
EXPANDED VIEW



Top Left



Top Right

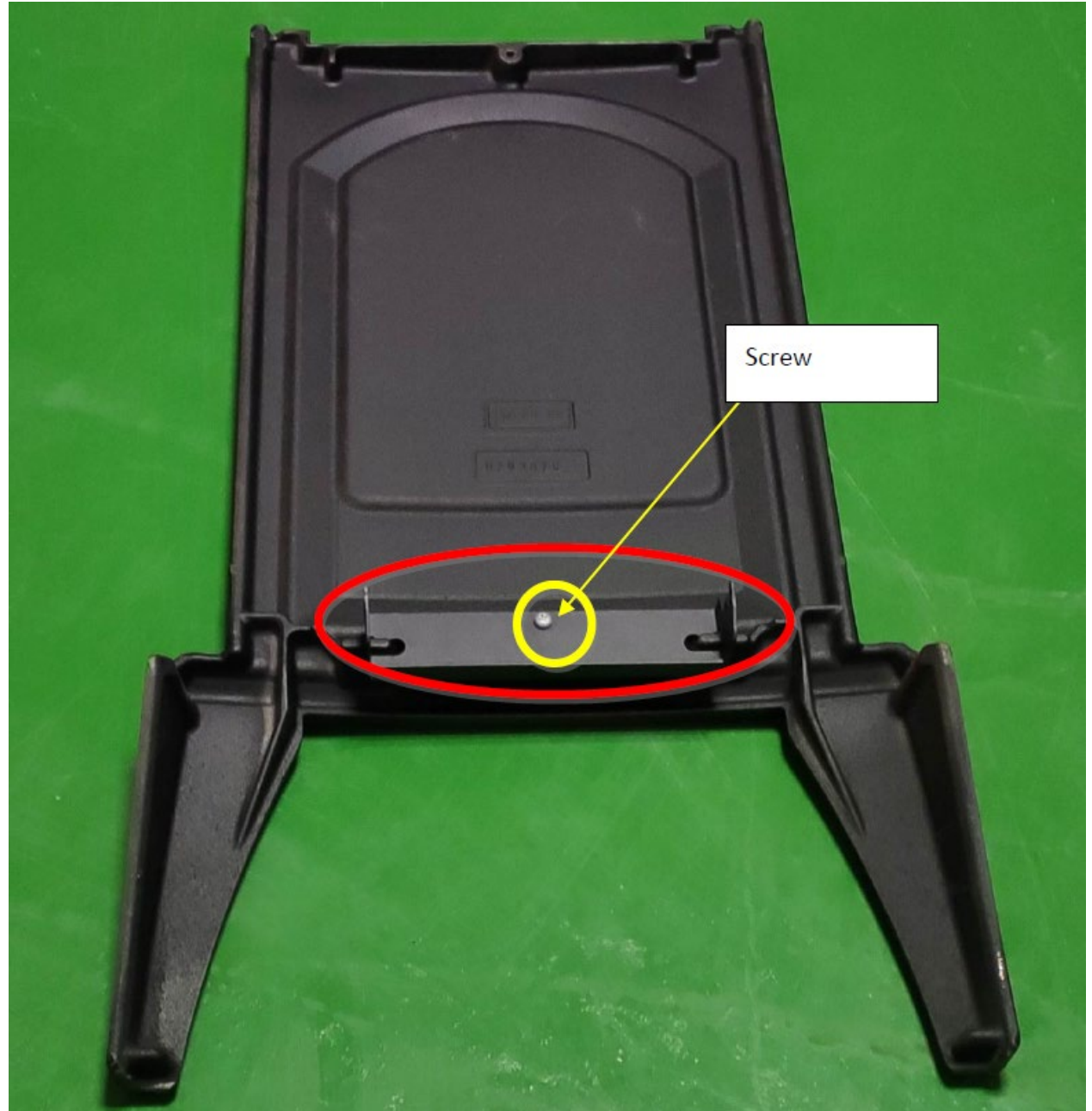


Bottom Left

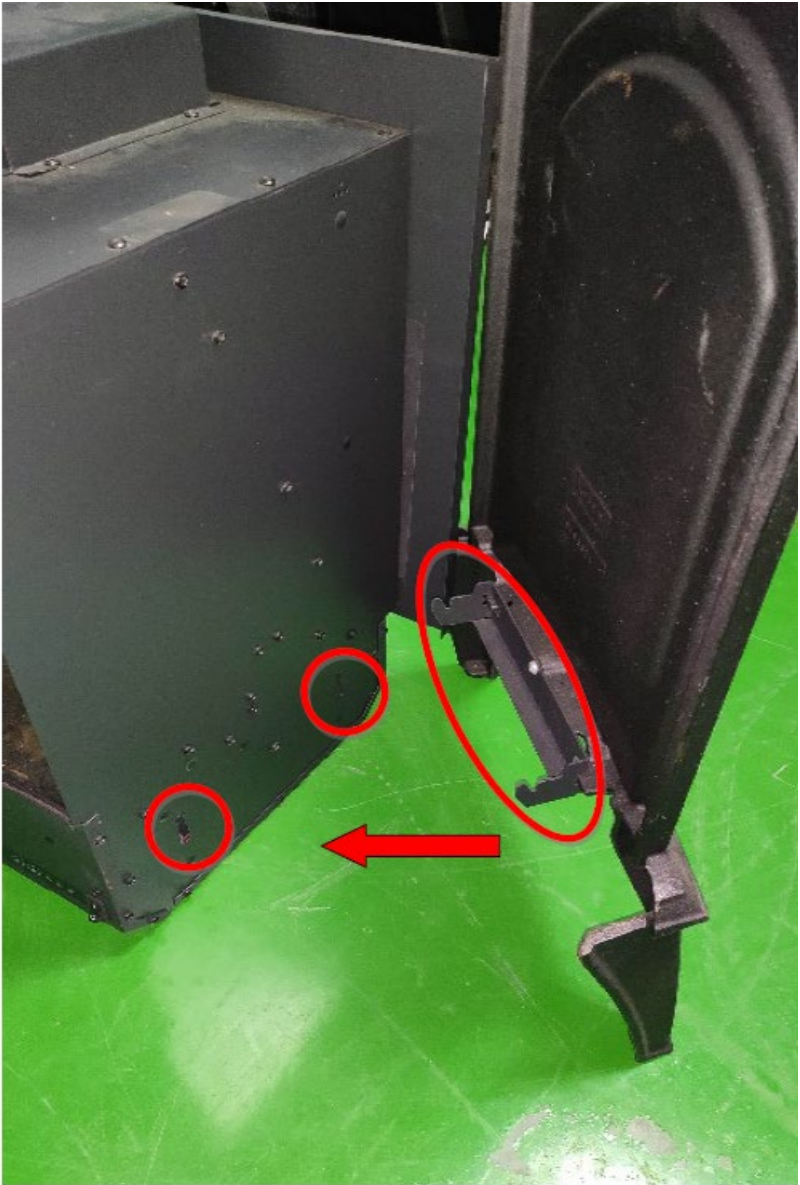


Bottom Right

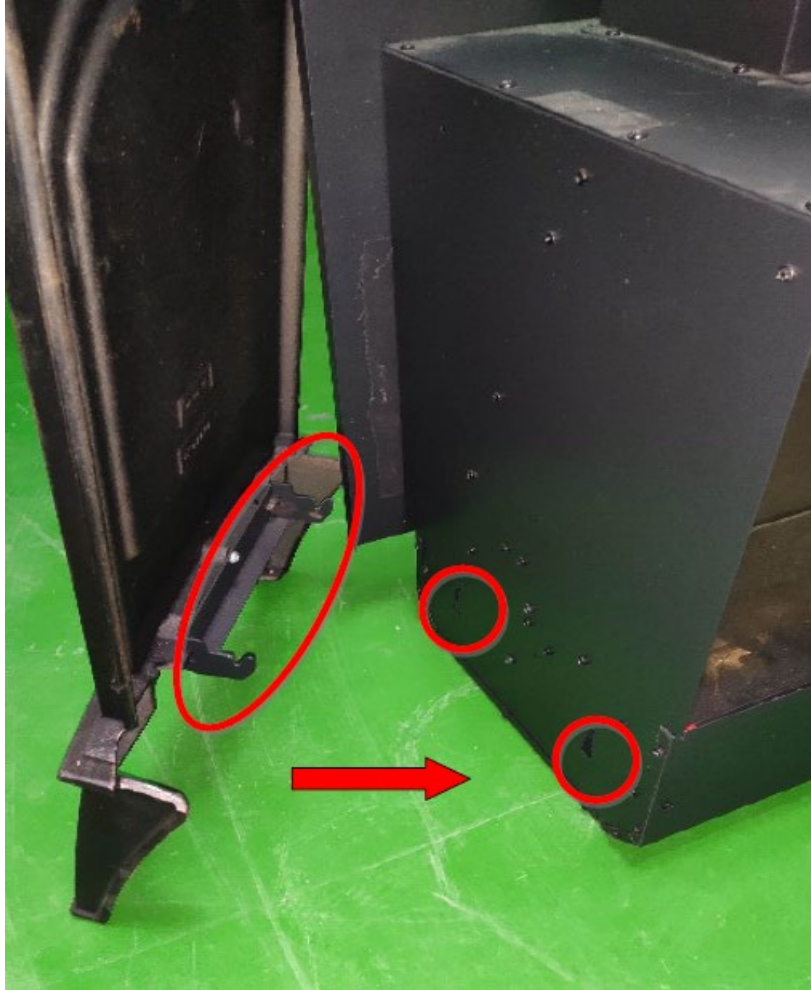
STEP 2: Latch the hook (circled in red) to the side panels.



Step 3 – Insert the hooks onto the fireplace body on both the left and right side.

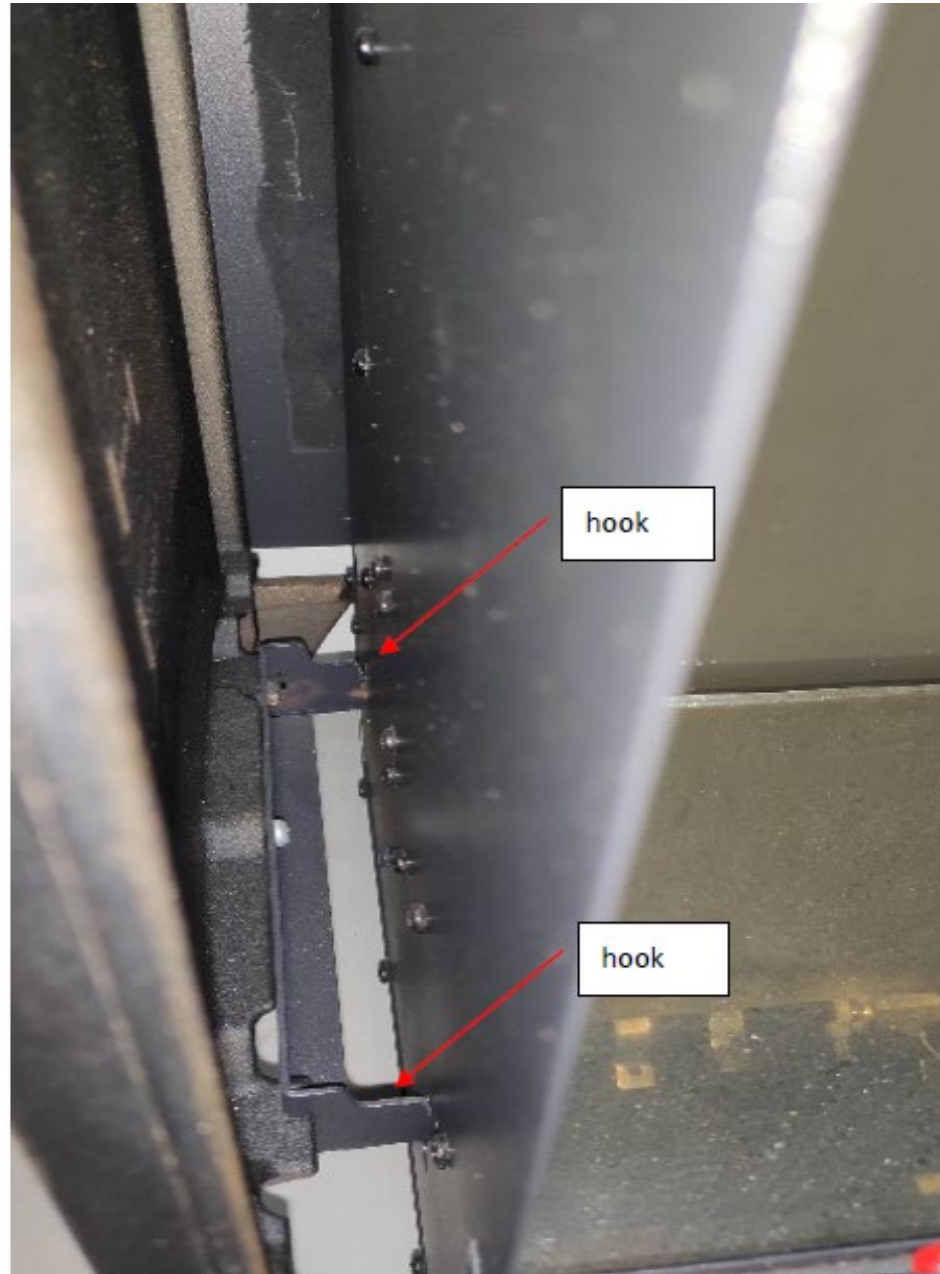


Right Side



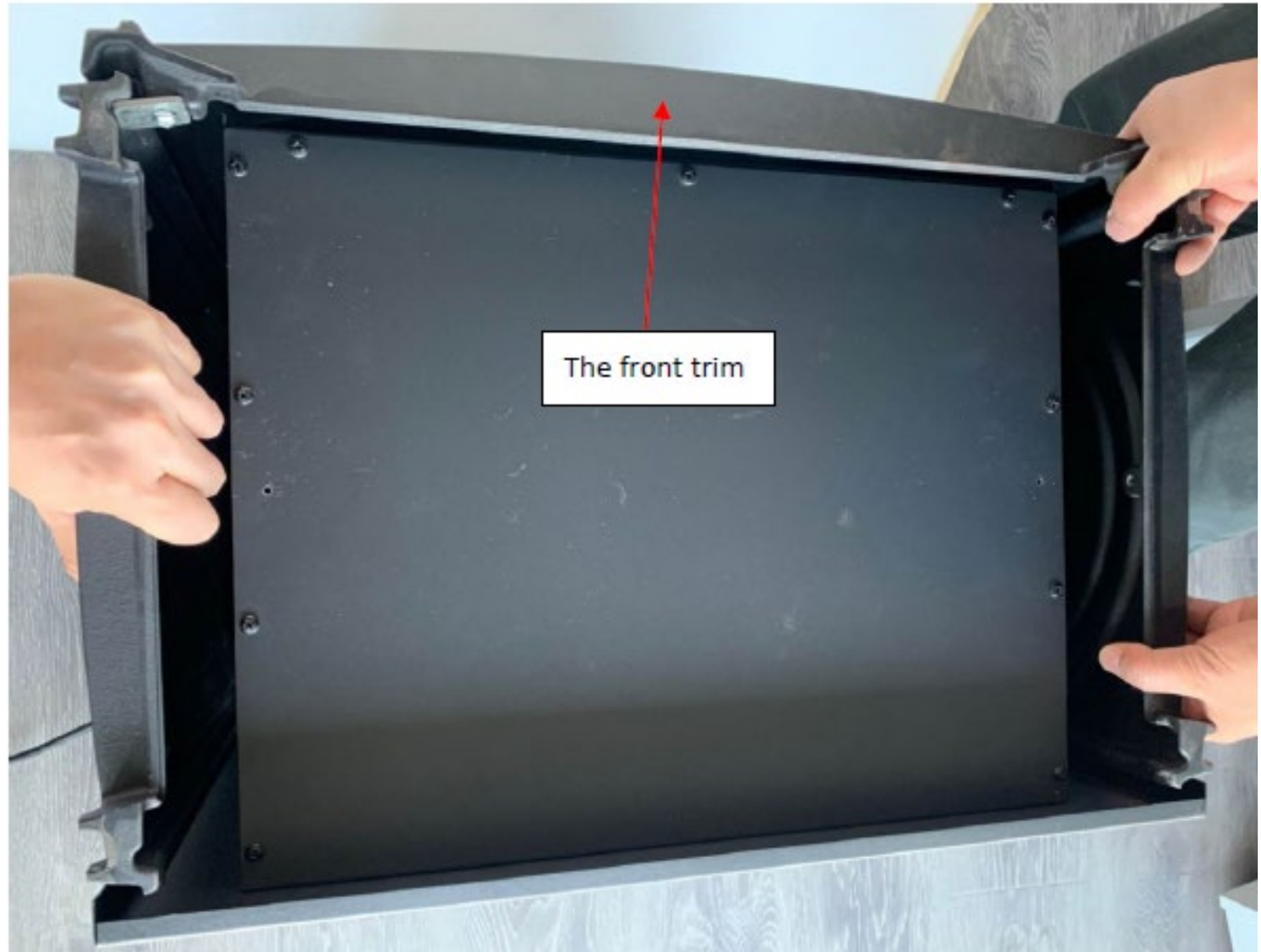
Left Side

The hooks have now been inserted into the fireplace body.



Insert the front trim to the fireplace from the top.

All the cast iron plates from step 1 should be inserted in place as shown above.





Screw the top fixing panel into the cast iron to secure the front panel.

Place the top cast iron panel to cap the fireplace. This should fit snug and secure on top of the stove.



The finished result.

