

# Fix your Fireplace



TRU-VIEW-XL

*Amantii*  
Electric Fireplaces

# Content

- [How to replace LED light](#)
- [How to replace flicker motor](#)
- [How to replace heating element](#)
- [How to replace the PCB board](#)
- [How to replace the signal receiver](#)
- [How to replace the top light](#)

# Replace LED light

## Step 1 Replace ember bed LED light



Knob on  
each side

Unscrew the knobs on both sides of the unit and then remove the glass.



After two knobs are removed, the front glass be released and come away from the unit. Take care to catch it.



Front glass

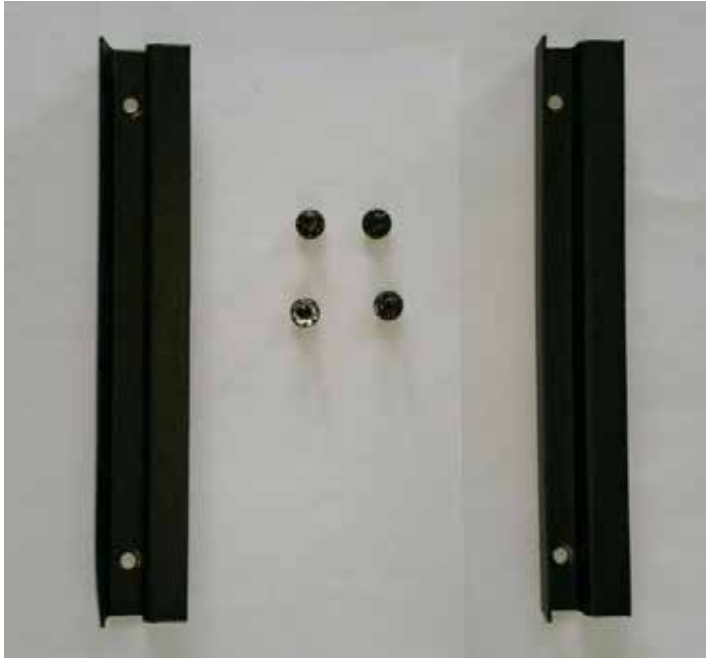
## Step 2



Zoomed view



Unscrew two screws on both sides and then to take off two bars and the ember bed glass panel



After the knobs and fending bars are removed, you can remove the ember bed glass panel and long steel bar with it.



## Step 3



After the ember bed glass panel is removed, you can now replace the LED light for ember bed effect. (Replace flame light see STEP 4)



Zoomed view

Zoomed view

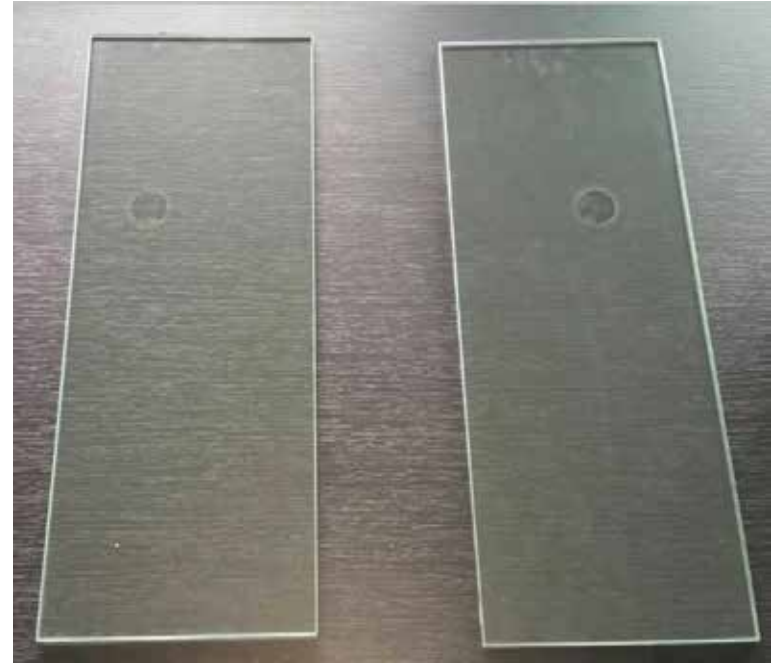
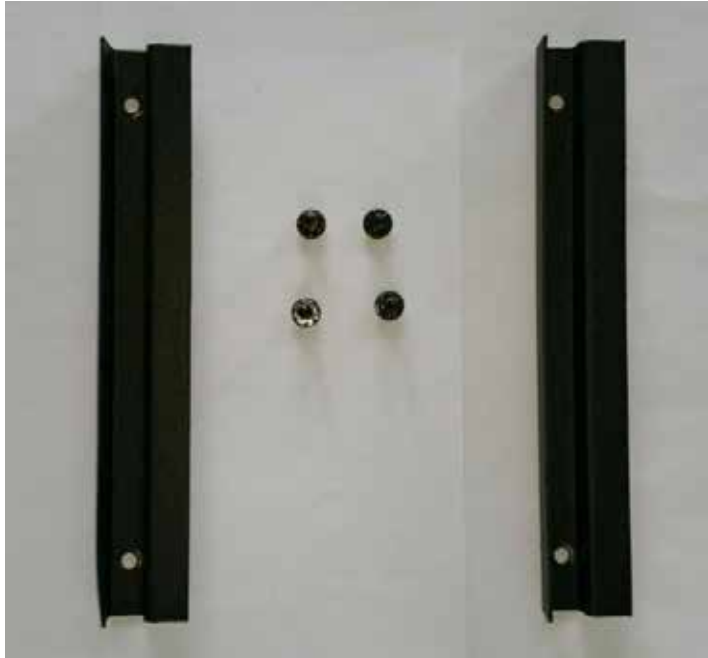


## Step 4

Unscrew 2 screws on the left side and 2 screws on the right side of the fireplace (where the arrows marked) to take off the fending bars. After the bars are removed, you can remove two side glass panels.







Screws and fending bars

Side glass panels

After screws and fending bars are removed, now you can remove the side glass panels.



Zoomed view

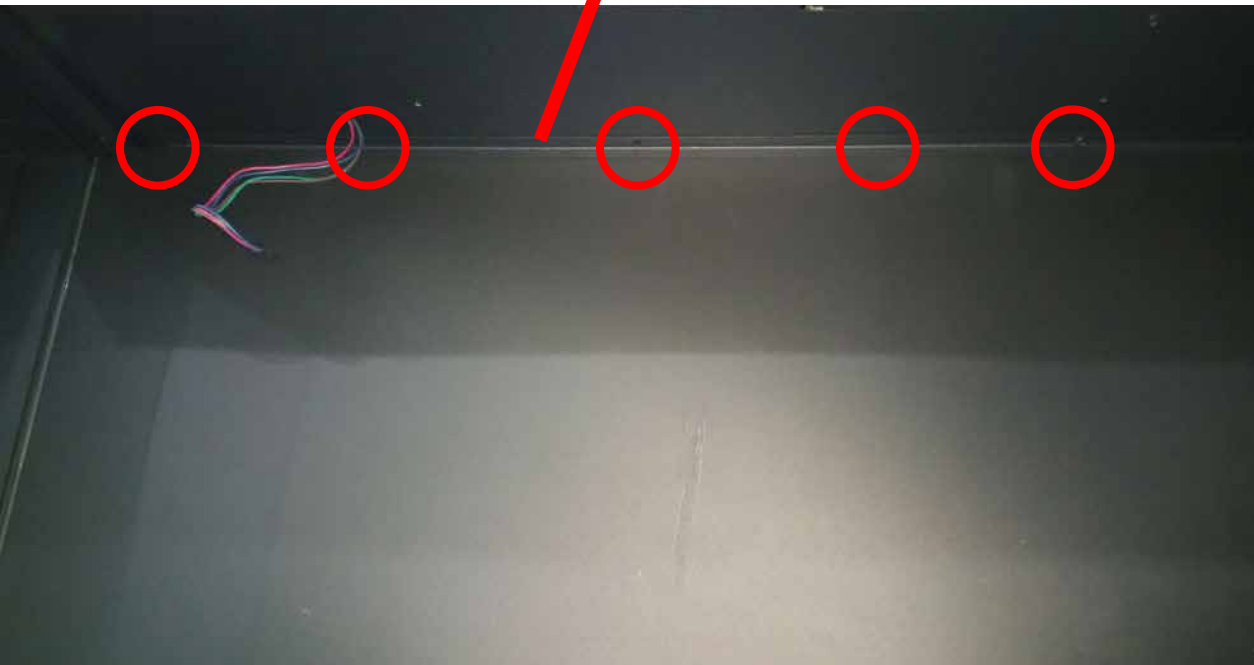


The top light located here

## Step 5

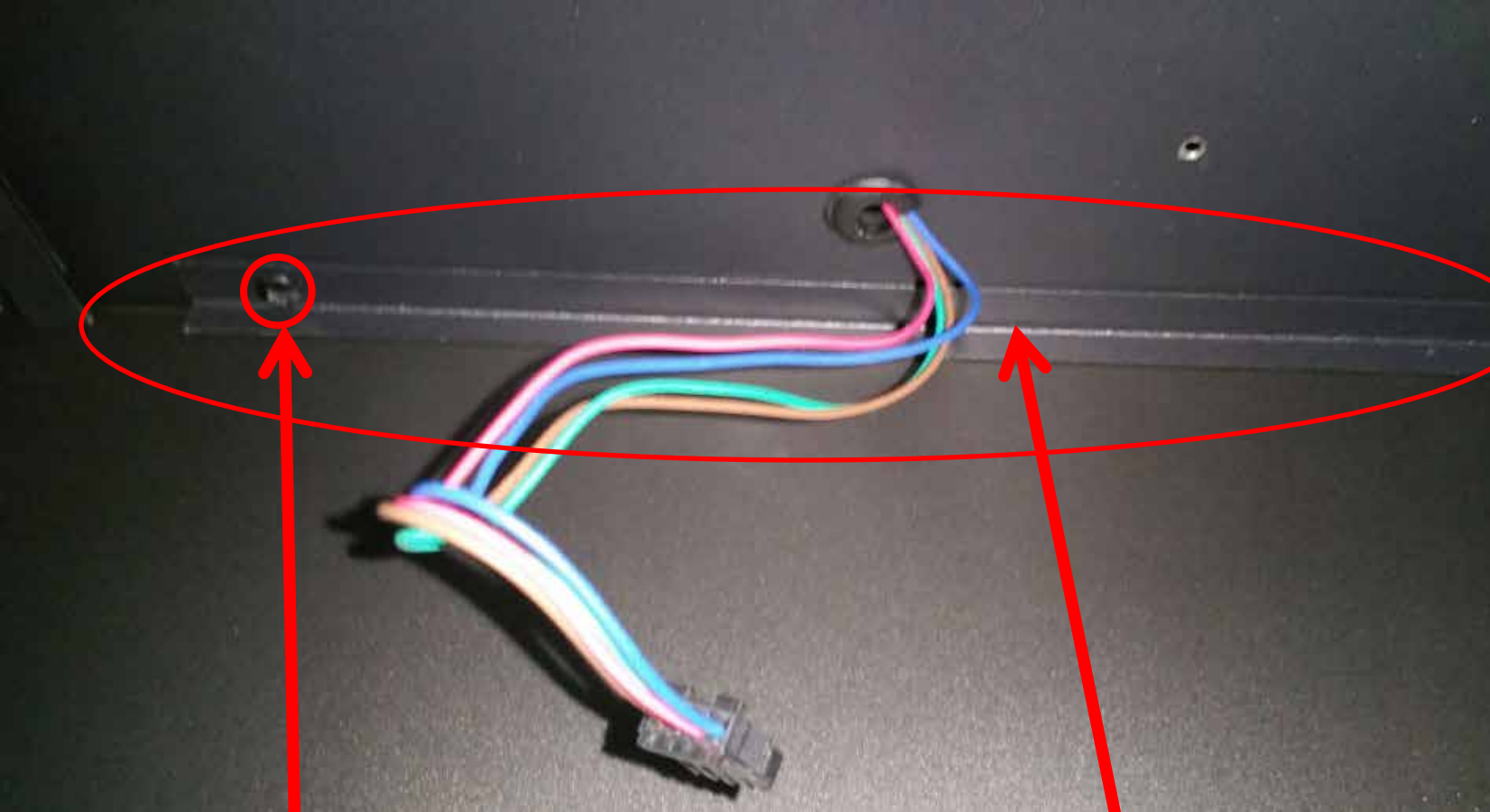
Unscrew 3 screws located in the canopy of the unit then disconnect cable to remove the top light from the fireplace.





## Step 6

Remove the screws and take off the fending bar. (Zoomed picture in the next page)



Screws that attach  
the fending bar

Fending bar



Fending bar

## Step 7

After fending bar is removed, you can now remove the visual glass panel using the small brackets are used to hold the front glass panel in place. These would have been removed in step 1.

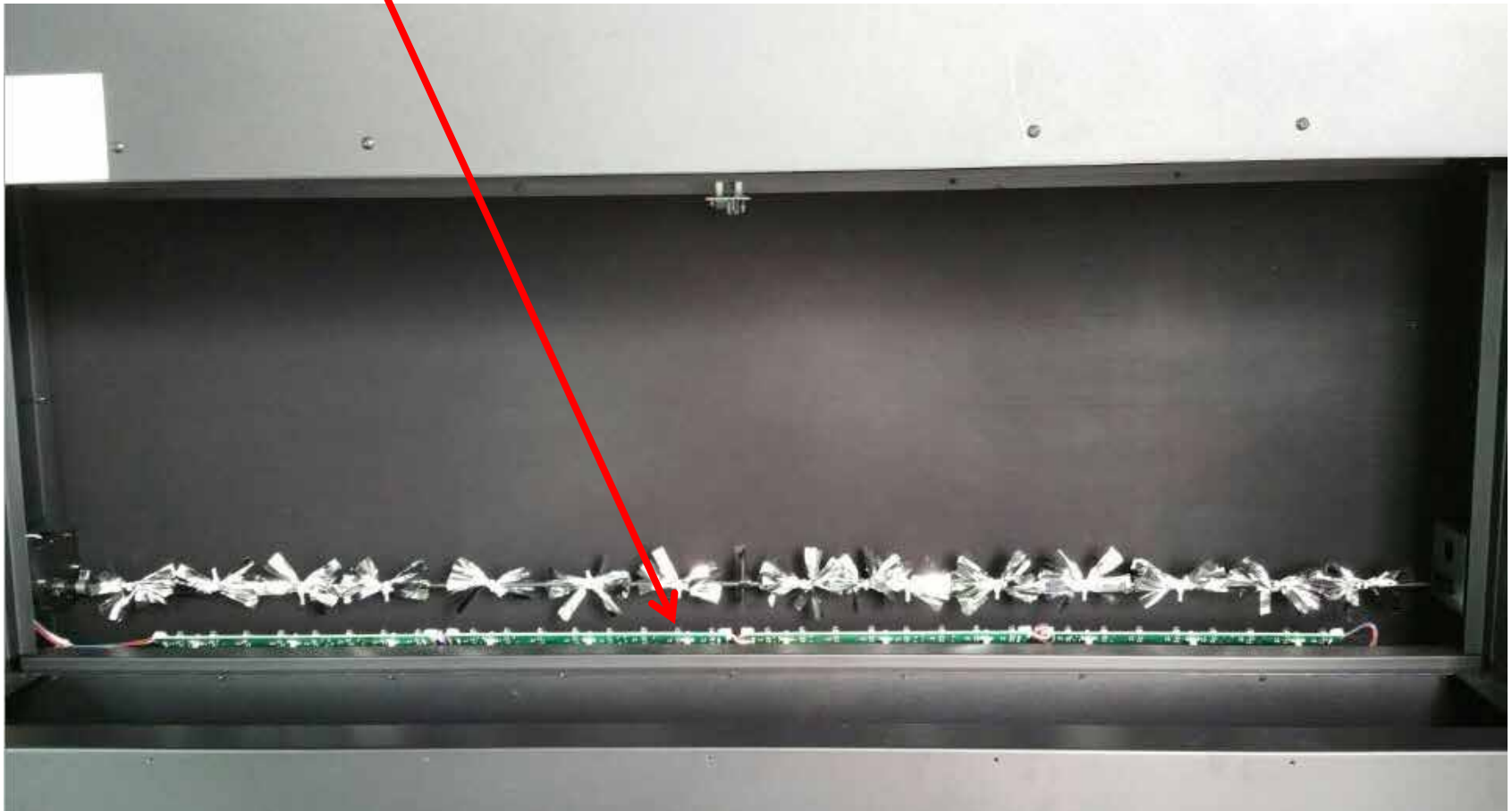


Visual glass panel

Push the bracket into the gap between the glass and the fireplace, using it to Hook the glass and Pulling towards you.

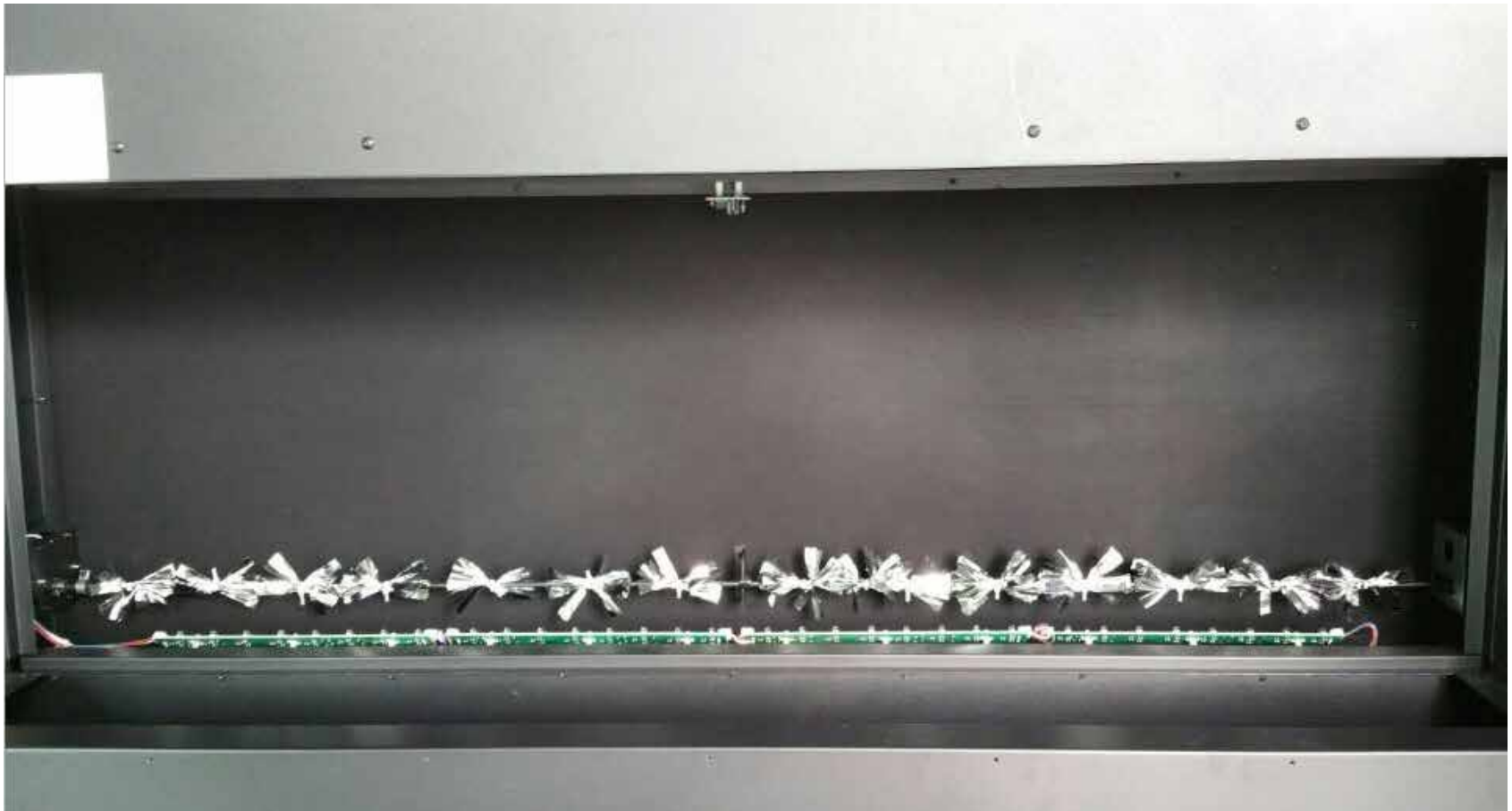
## Step 8

After the visual glass panel is removed, you can now replace LED light for flame effect.



# Replace the flicker motor

Please follow the same 1 – 7 steps as changing the LED light.  
Continue from this point on.



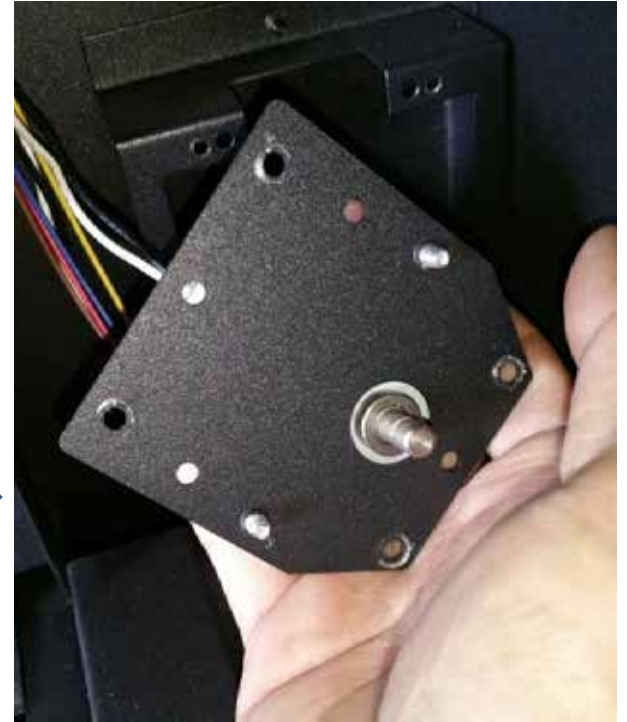
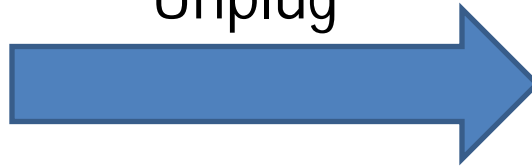
## Step 2



Unscrew 4 screws



Unplug

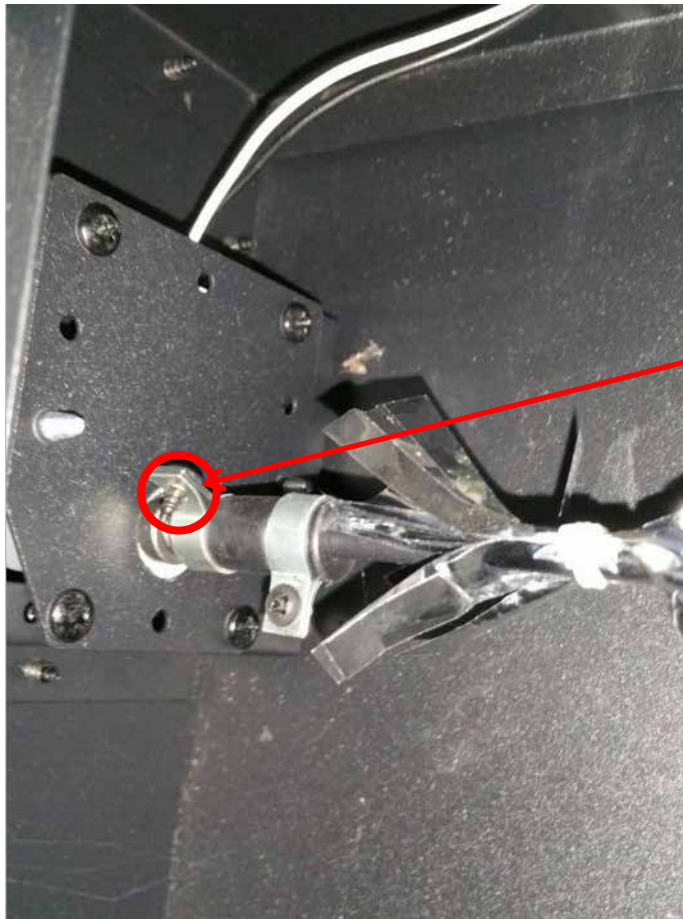


Now you can replace the flicker motor for ember bed effect



# Replace flicker motor for ember bed effect

The flicker motor for ember bed effect is beneath the ember bed glass panel.



## Step 1

Unscrew the screw and then disconnect the flicker rod from the motor



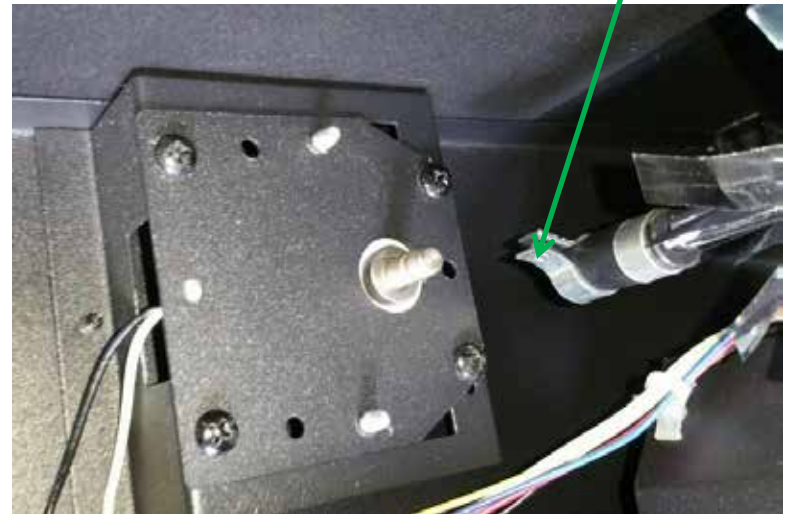
# Replace flicker motor for flame effect

The flicker motor for flame effect is behind the visual glass panel.



## Step 3

Unscrew the screw and then disconnect the flicker rod from the motor





## Step 4

Unscrew 4 screws, unplug and now you can replace flicker motor for flame effect.

# Replace the heating element

Please follow Steps 1 and 2 as in replacing LED light.  
You will then continue from here:



The heating element located here

# Step 1

Unscrew 5 screws, then pull the heating element set down.



## Step 2

Remove the heating element.





Unscrew 4 screws and you can separate the heater from the heating element set.



# Step 3

Unplug and replace the heater.





# Replace PCB board

Please follow Step 1 to 2 in replacing LED light, you come to here



The PCB board located here

# Step 1

Unscrew 4 screws, release the control board and pull out, you will find the PCB Board attached to it.



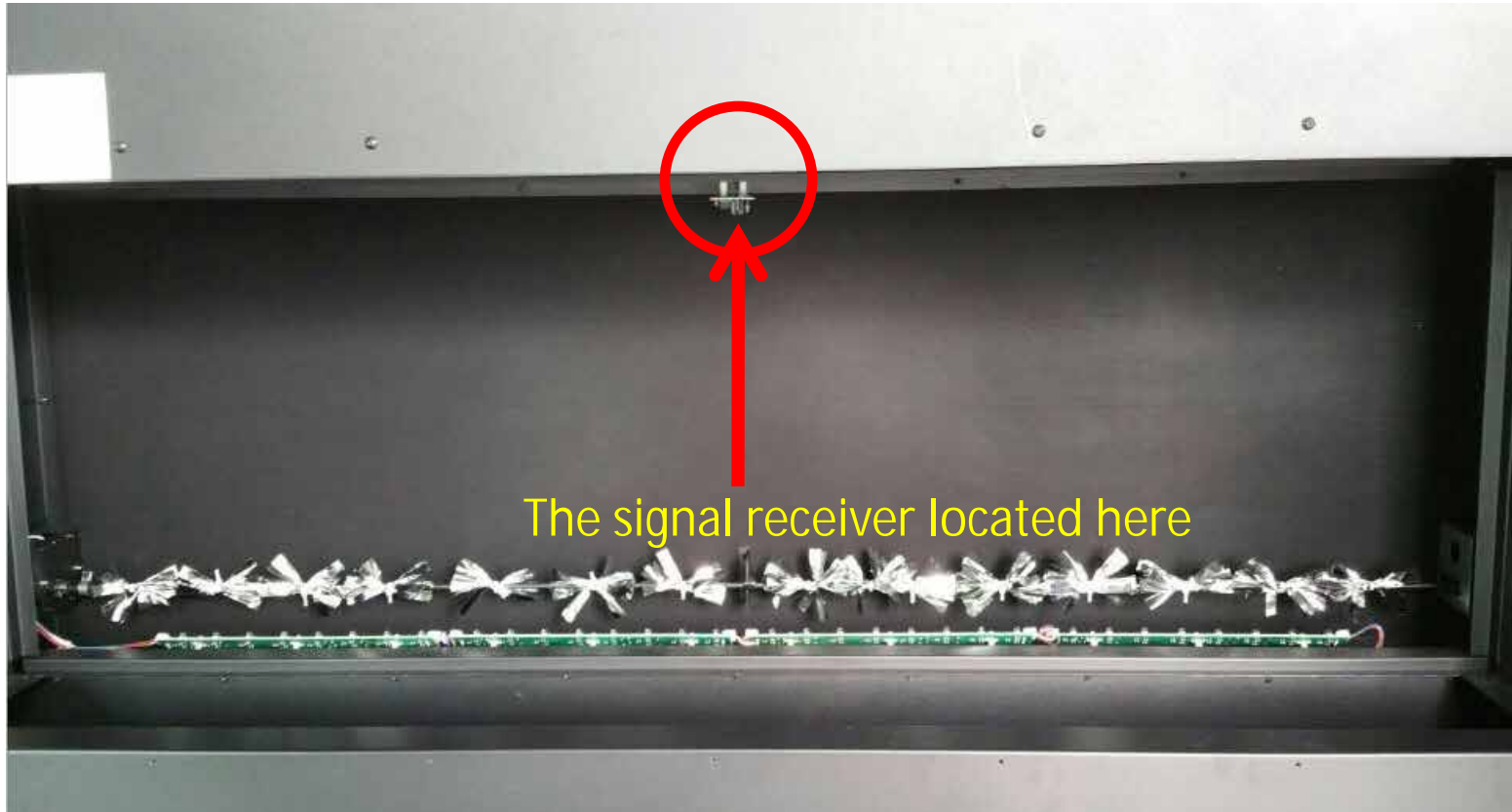
## Step 2

Unplug and replace the PCB board.



# Replace signal receiver

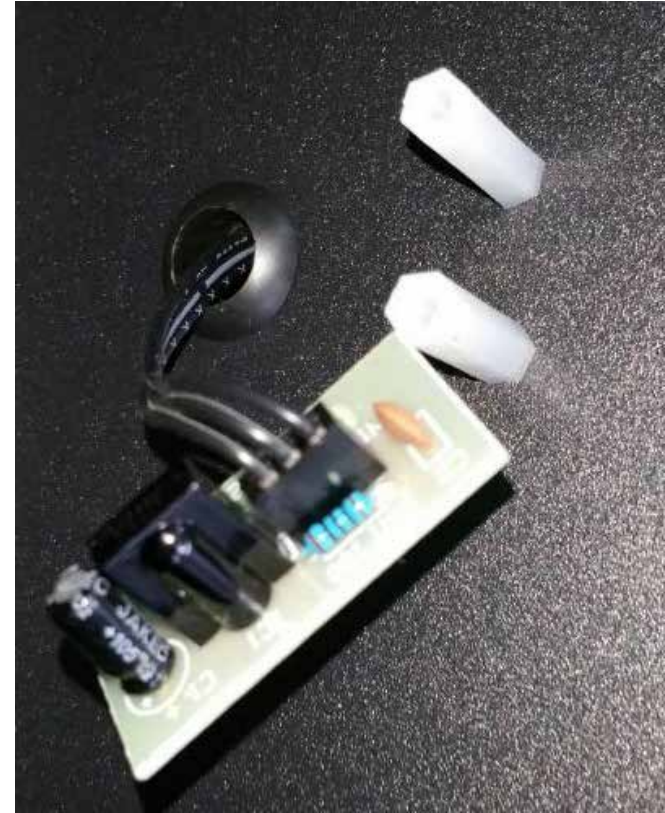
Please follow the same 1 – 7 steps as changing the LED light.  
Continue from this point on.



# Step 1



Unscrew 2 screws



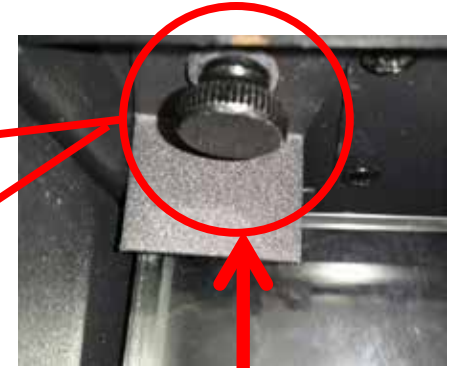
## Step 2

Please follow step 1 and step 2 in replace PCB board. Unplug the signal receiver from the PCB board and replace with a new receiver.



# Replace top light

## Step 1



Unscrew the  
screw

Unscrew one screw on both sides and then to  
remove the front glass.



Zoomed view



The top light locates here

## Step 2

Unscrew 3 screws then unplug to replace the top light.

