

# TRADITIONAL (TRD) BESPOKE REPAIR GUIDE



*Amantii*  
Electric Fireplaces

12.23.22

# SAFETY FIRST

**WARNING:** Disconnect power and allow the electric fireplace to cool before attempting any maintenance or cleaning to reduce the risk of fire, electric shock or damage to persons.

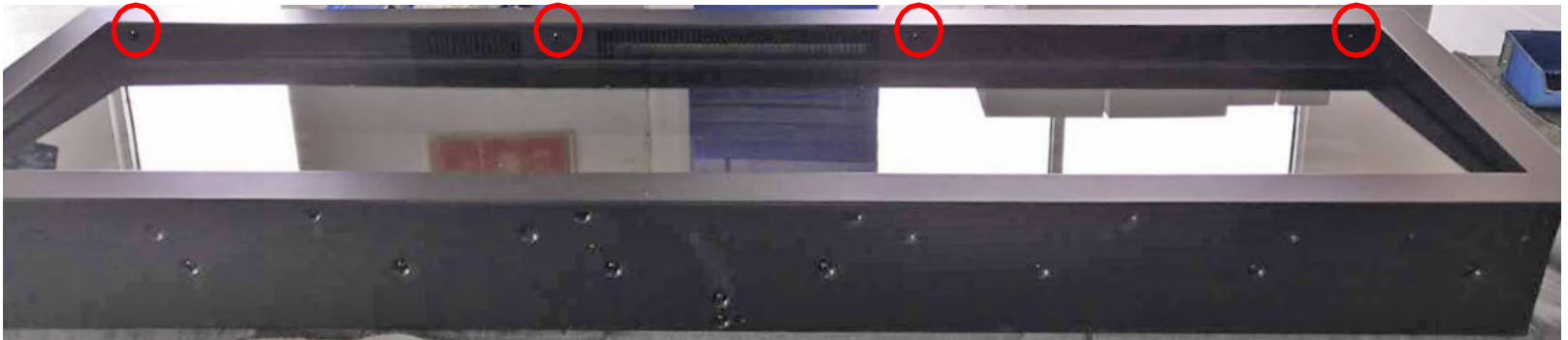
**! NOTE:** The electric fireplace should not be operated with an accumulation of dust or dirt on or in the unit, as this can cause a build of heat and eventual damage. For this reason the heater must be inspected regularly.

# Content

- Replacing the ember Bed LED strips
- Replacing the LED strip for the flame
- Replacing the motor
- Replacing the WiFi circuit board
- Replacing the heating element
- Replacing the top light
- Replacing the circuit board
- Replacing the AC adapter
- Replacing bluetooth speaker set
- Replacing the speaker set

# Replacing The Ember Bed LED Strips

**Step 1** Remove the screws circled in red to safely remove the trim. Screws will be required to safely reinstall the trim



Please note that there are magnetic stones on the bottom of the fireplace that secures the trim in place



Trim

Magnetic stone

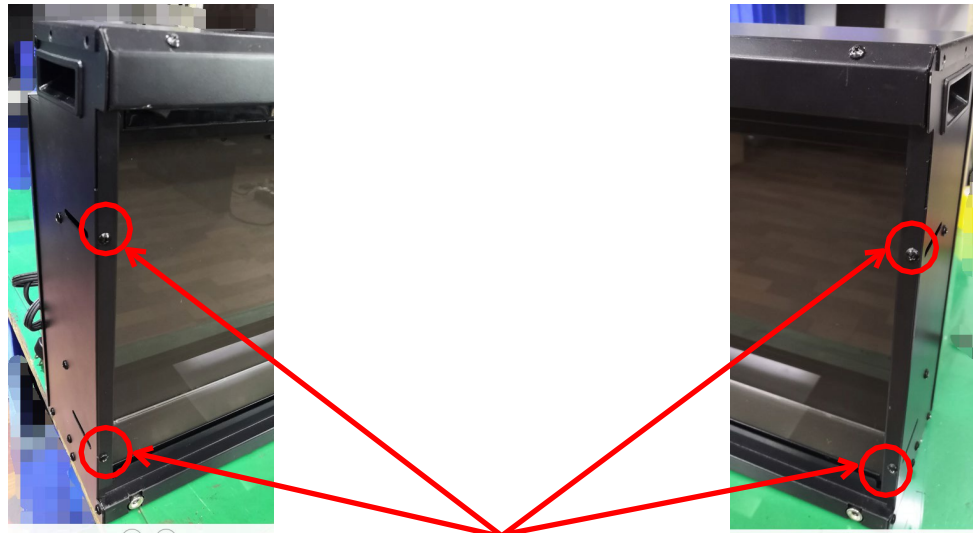
## Step 2

After the trim has been removed the front glass panel can now be removed.



### Step 3

Removing the side panels - The steel side panels hold the log in place. Remove the 4 screws circled in red to remove the side panels. Screws will be reused to reattach the steel side panels. The media now be removed from the unit once the side panels have been removed.

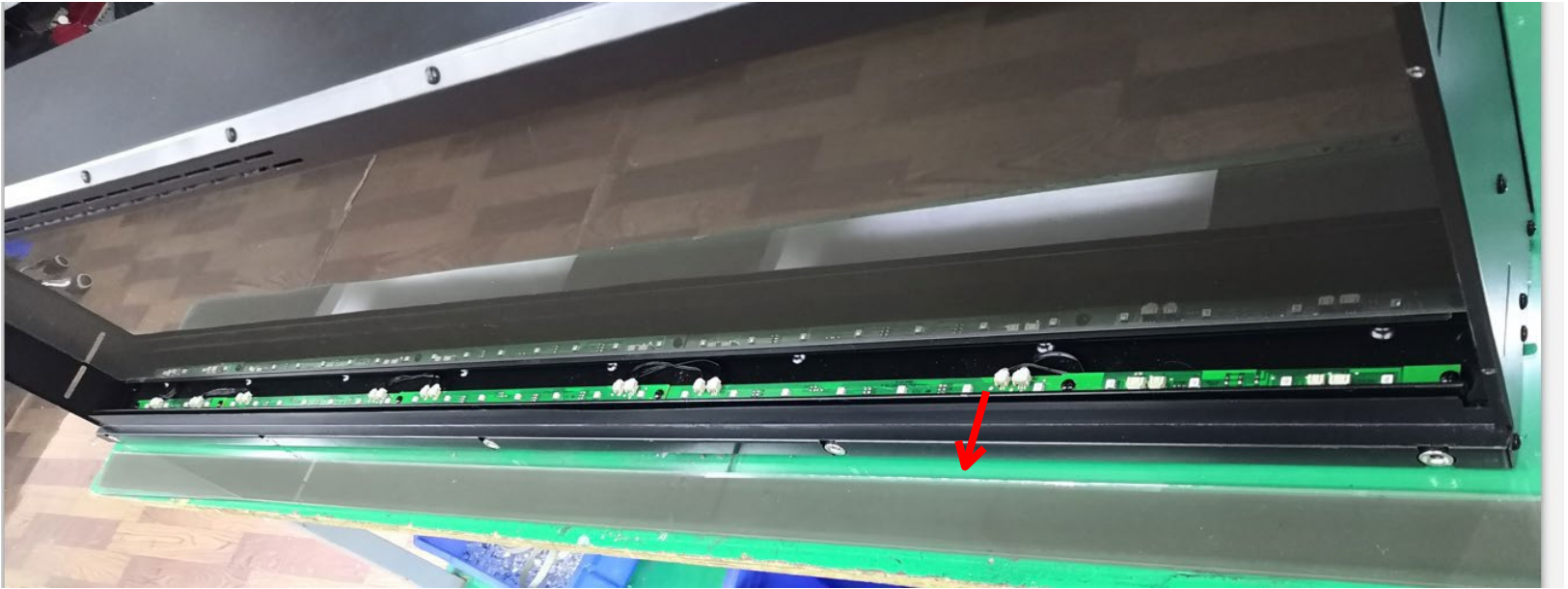


The steel panels



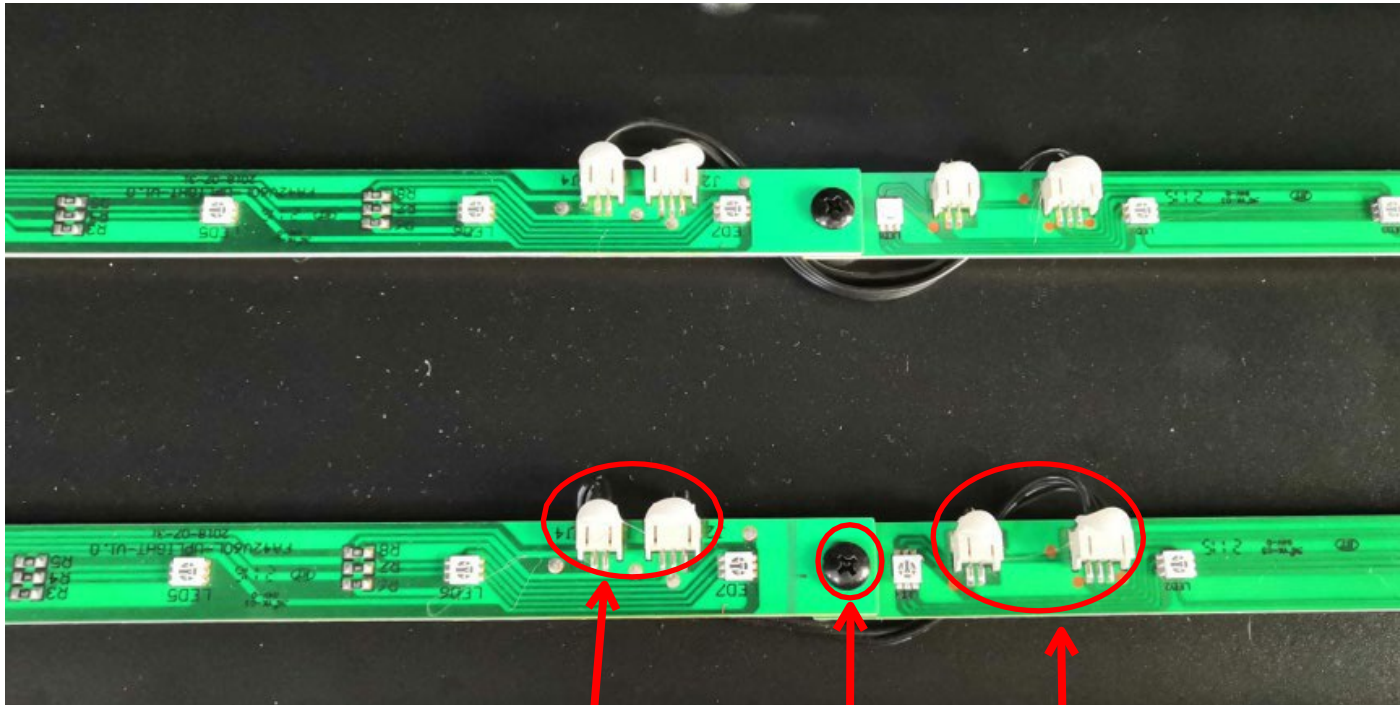
## Step 4

After the steel panels have been removed, the ember bed glass panel can now carefully be removed by lifting one end up and then out. The ember bed LED strips are located below it. Please handle the piece of glass with care to avoid breakage





**Step 5** The LED strips are held in place with screws and are connected to the other strips or to the end using a molex connector. Unscrew the screws of the failed LED strip and unplug the molex connector to replace it with a new one.



Unplug

Unscrew

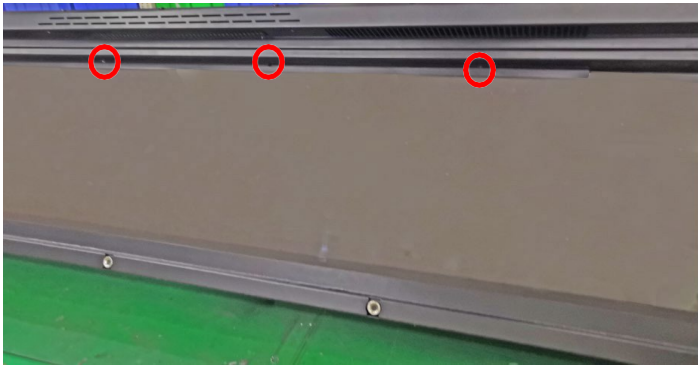
Unplug

# Replacing the LED Strip for Flame

Follow STEP 1 to 4 from Replacing the Ember Bed LED light.

## Step 1

Remove the screws circled in red to remove the steel bar that holds the flame effect glass to the unit. Remove the steel bar from the unit. The flame effect glass is now removable.



steel bar



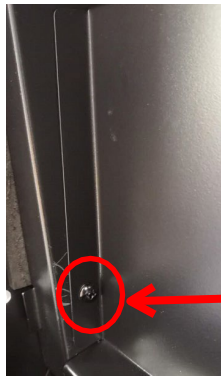
flame effect glass

## Step 2

Remove flame effect steel panel. To remove the panel remove the screws circled in red on the unit, as shown in the diagram. Remove the panel and set it aside .



Zoomed View

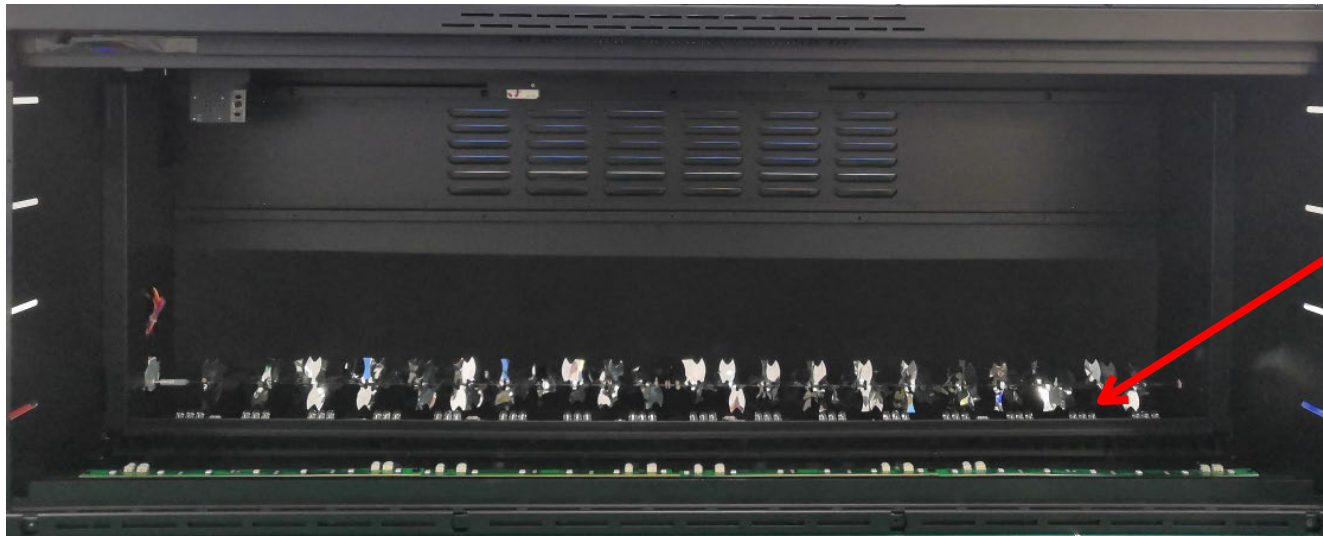


Zoomed View



Zoomed View

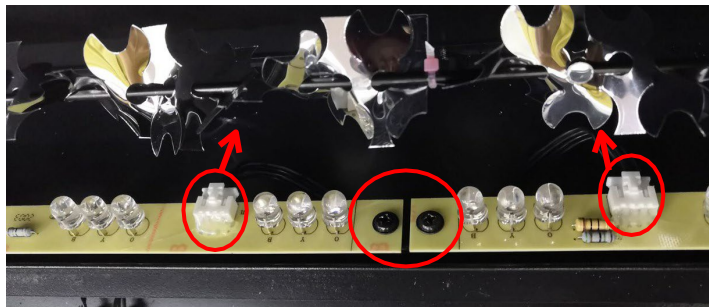
After the flame effect steel panel has been removed, the unit should be as shown in the diagram below.



LED strips for  
flame effect  
located here

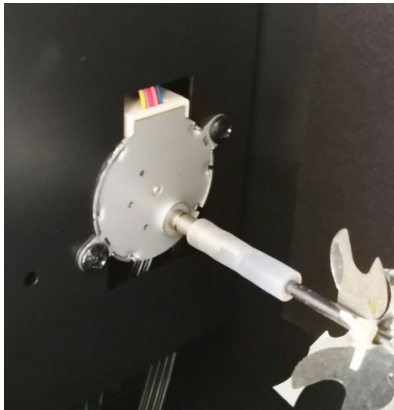
### Step 3

The Flame LED strips are held in place with screws and are connected to the other strips or to the end using a molex connector. Unscrew the screws of the failed LED strip and unplug the molex connector to replace it with a new one.



# Replacing the motor

Follow STEP 1 to 2 in replacing the LED strip for flame, you can come to here. After the flame effect steel panel's been removed, you can see the flame motor on the left end.





# Steps to removing the motor

## Step 1

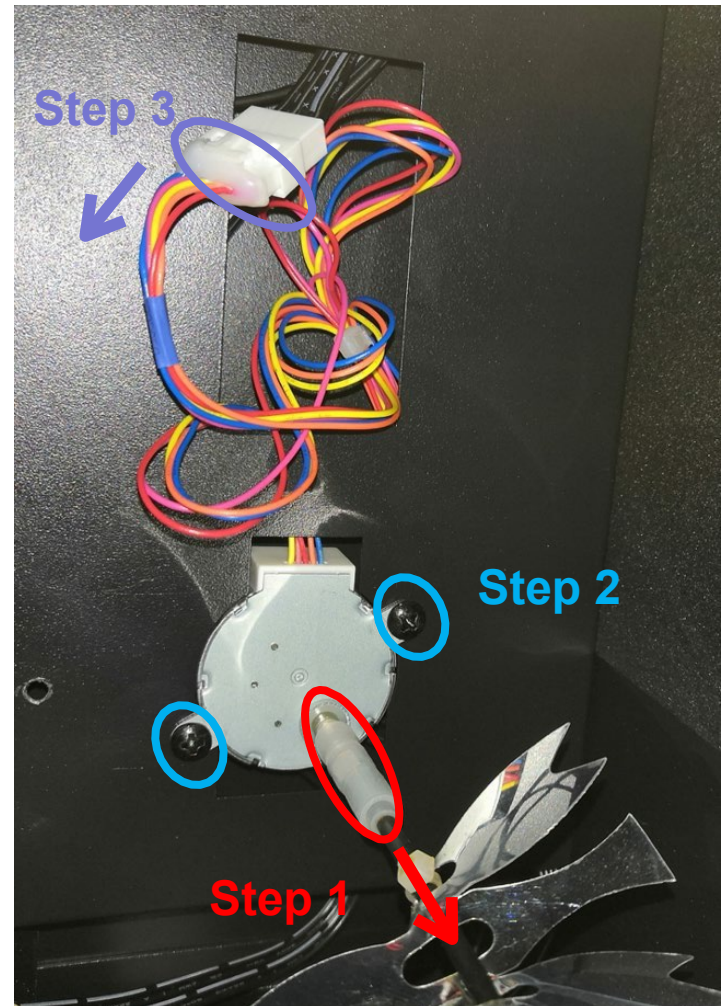
Remove the reflector from the fireplace

## Step 2

Remove the 2 screws circled in red to remove the motor from the fireplace.

## Step 3

The motor is connected using spade connectors. Carefully disconnect the motor and replace.

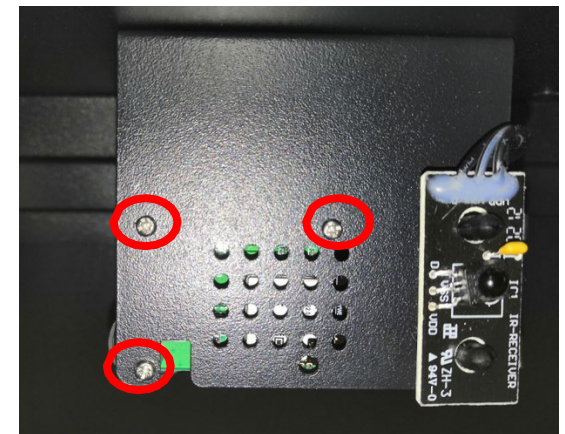
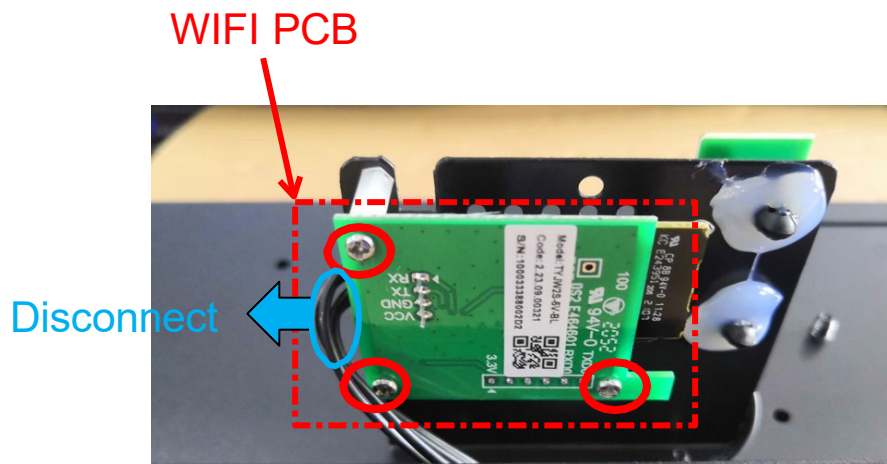


# Replacing the WiFi PCB

Follow STEP 1 in replacing the LED strip for flame to see that the WiFi PCB is under the middle plate.

**Step 1** Remove the 6 screws circled in red to remove the WIFI PCB.

**Step 2** Disconnect the spade connector and replace the WiFi PCB



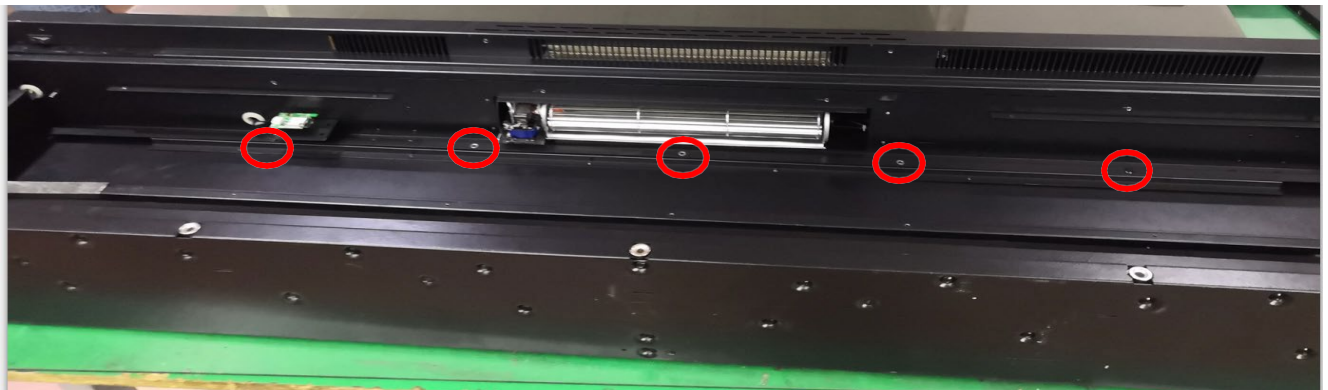
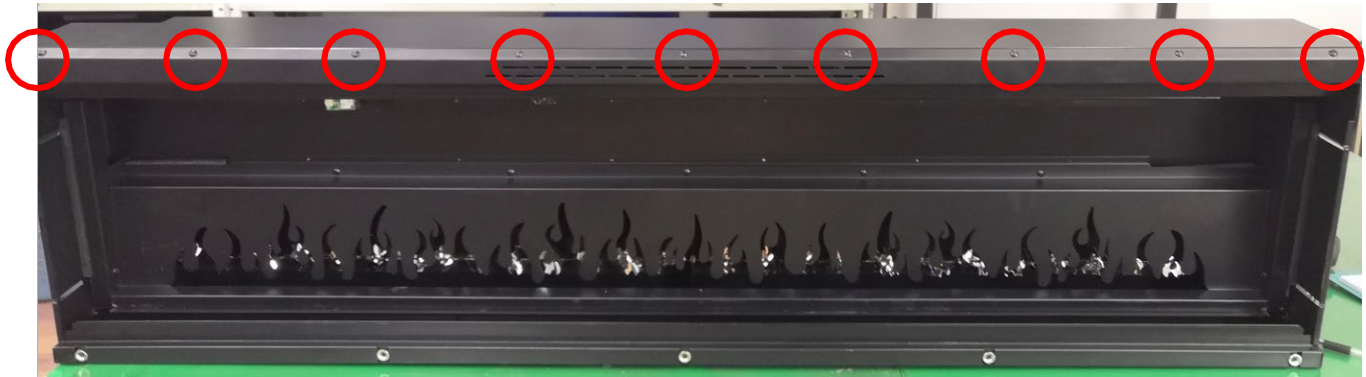
Zoomed View



# Replace the heating element

Follow STEP 1 in Replace Flame LED light.

- Step 1** Remove the screws circled in red to take off the inner top panel.  
The heating element, top light, PCB board, AC adapter, bluetooth speaker set and speaker set are all located here



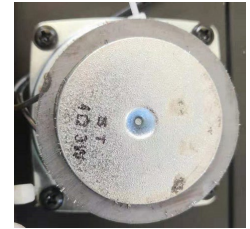




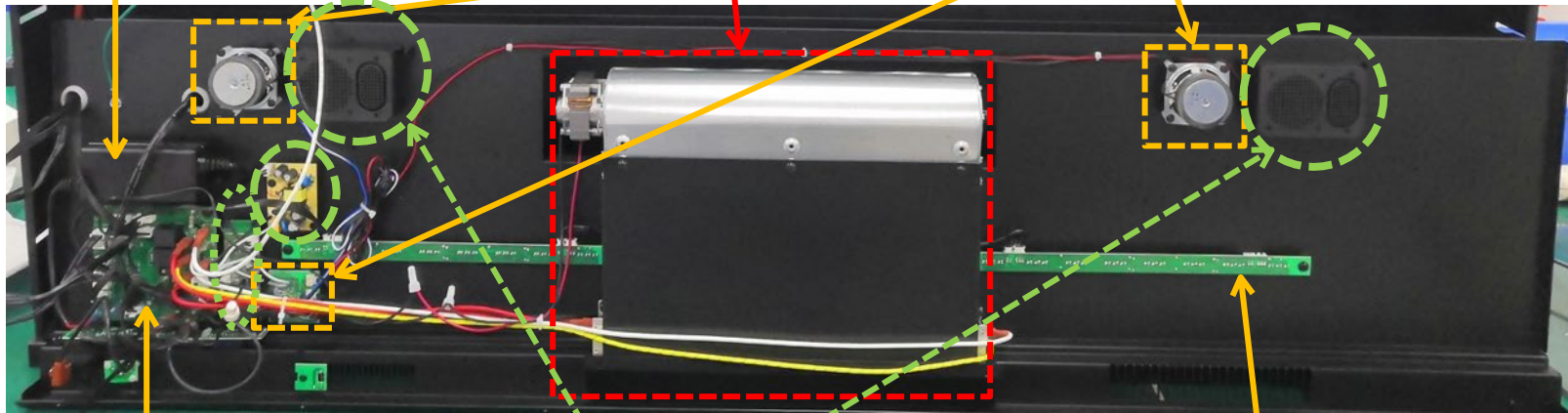
AC adapter



heating element



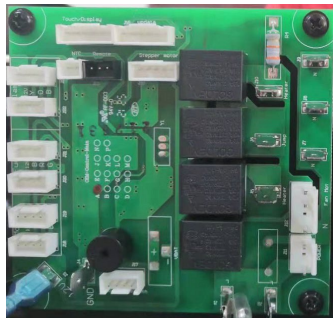
speaker set



PCB board

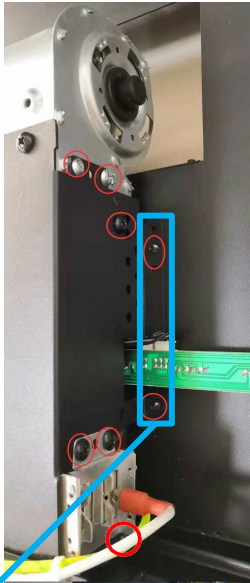
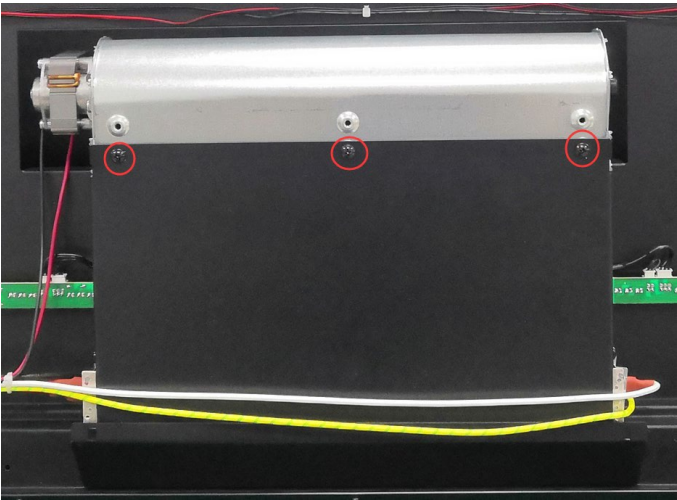
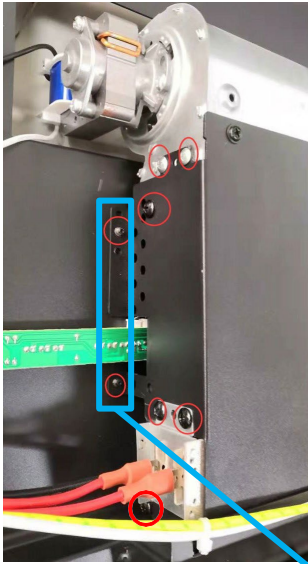
bluetooth speaker set

top light



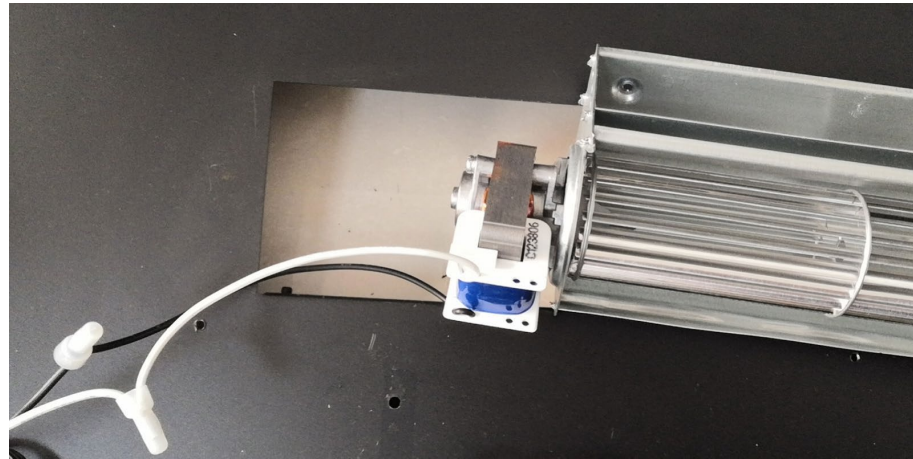
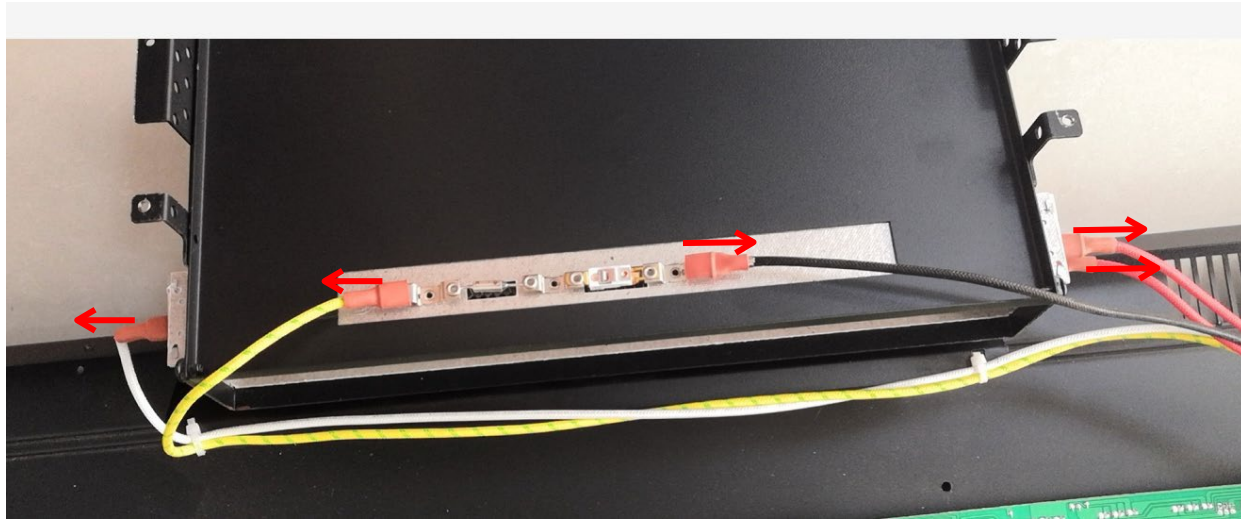
# Step 2

Unscrew the screws circled in red (19 pcs) to take off heating element assembly from the inner top panel.



# Step 3

Unplug the heater and replace it with a new heater.

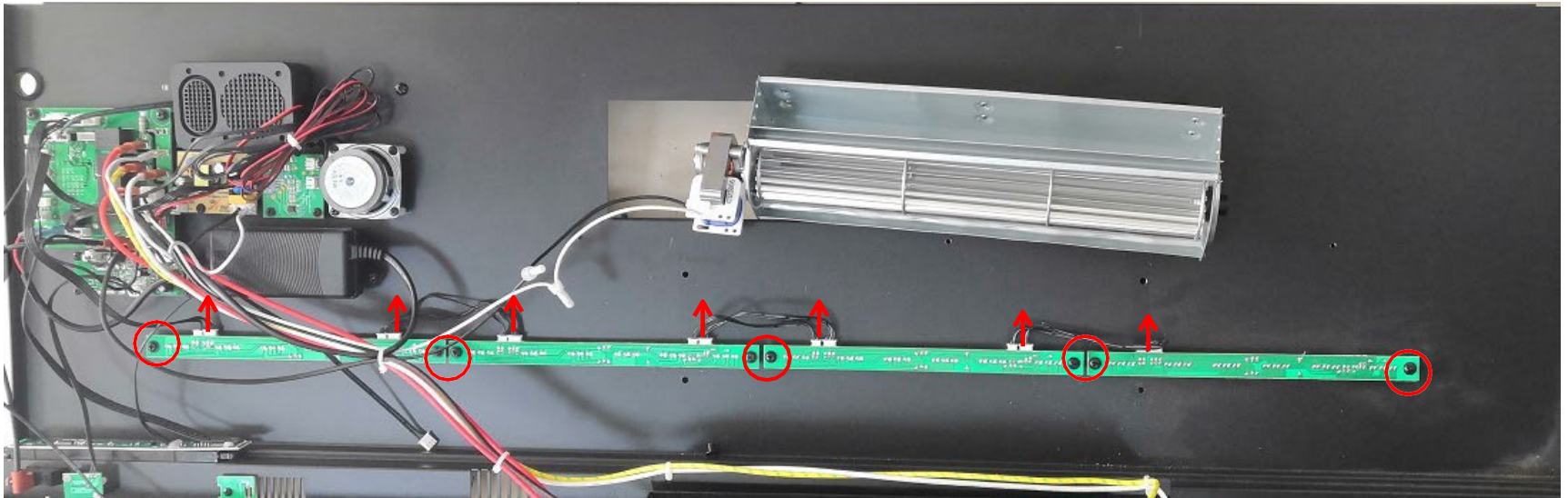




# Replacing the top light

Follow STEP 2 in Replacing the Heating Element.

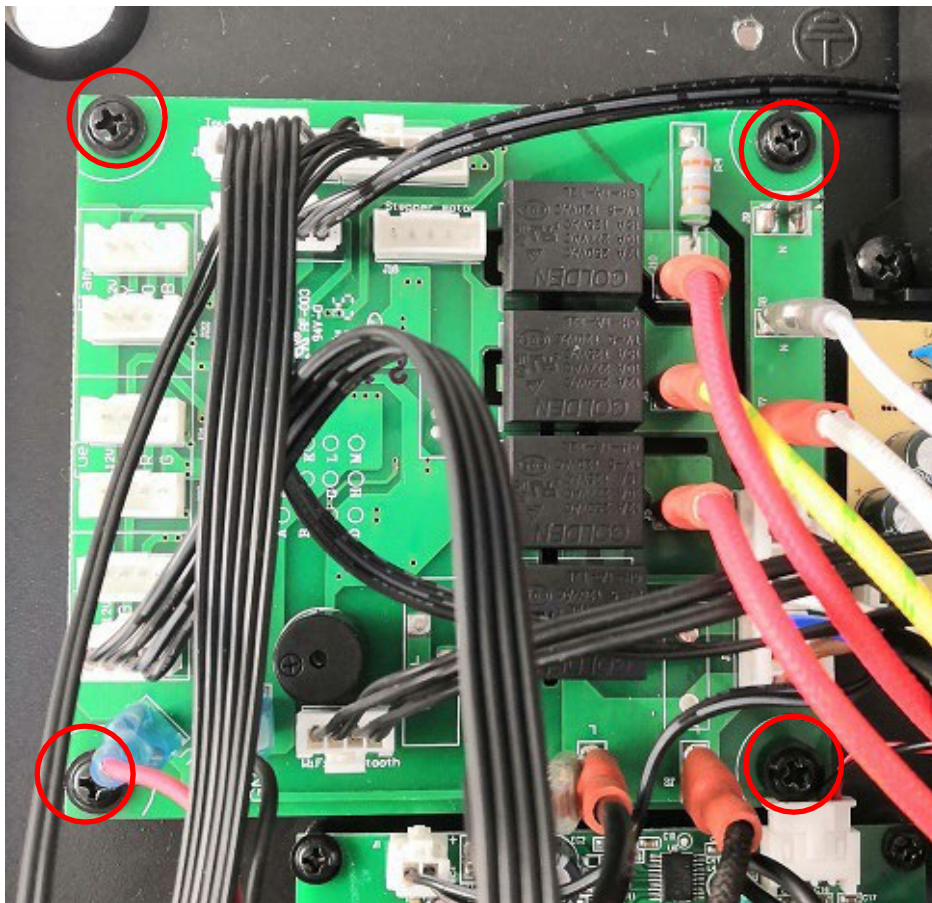
Remove the screws circled in red to disconnect the top light from the inner top panel. Unplug the top light and replace it with a new top light.



# Replacing the PCB board

Follow STEP 1 in Replacing the Heating Element.

Remove the 4 screws circled in red to replace the failed PCB board .  
Secure the new board to the inner top using the same 4 screws previously removed.



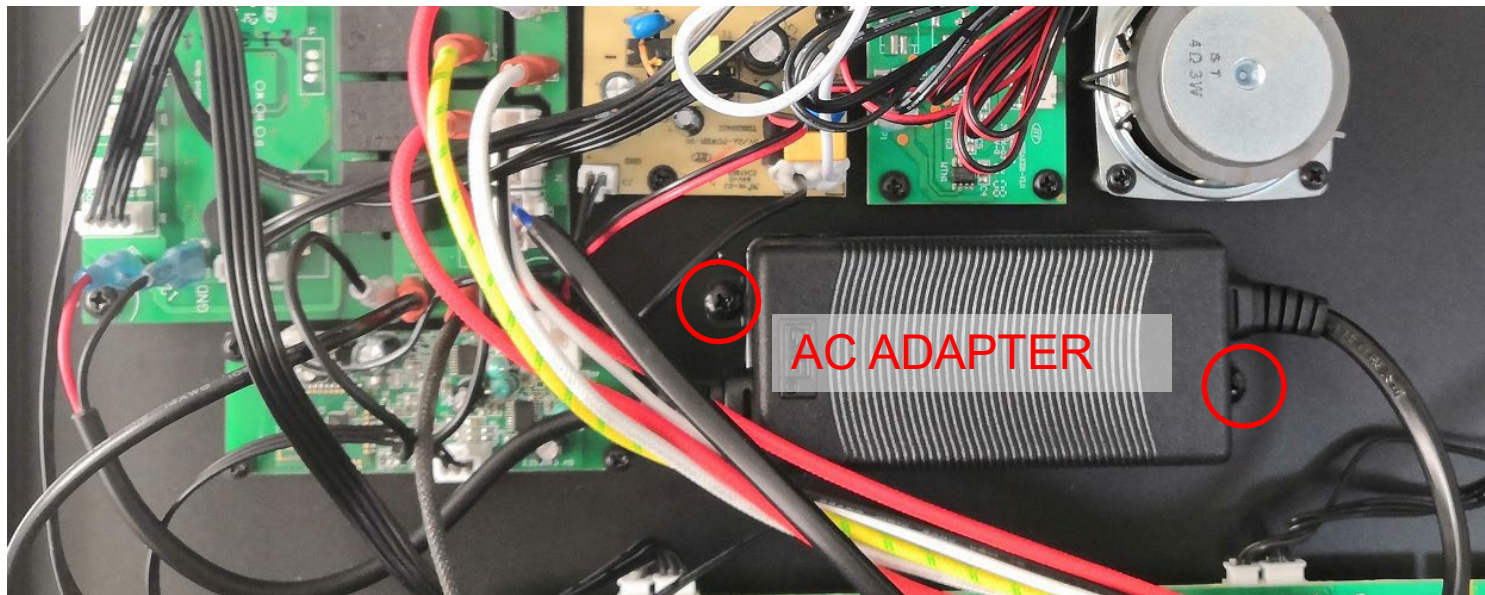
**RECOMMENDED:** Record the connections by taking a photo before removing and installing the new PCB board

# Replacing the AC adapter

Follow STEP 1 in Replace the Heating Element.

Remove the screws circled in red.

The AC adapter is connected to the PCB board using a molex connector. Follow the lead from the AC adapter back to the board and disconnect it from the PCB board. A new receiver can be connected to the PCB board then secured to the inner top of unit.

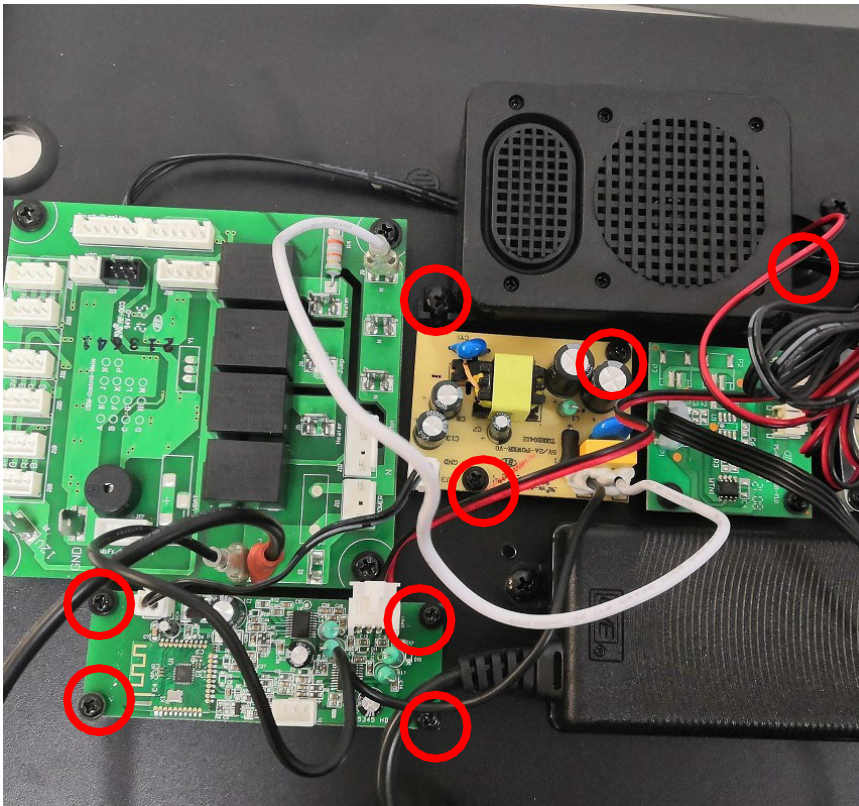




# Replacing the Bluetooth Speaker Set

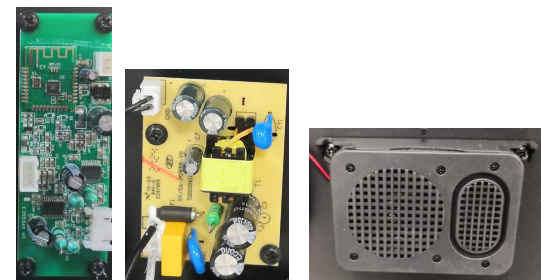
Follow STEP 1 in Replacing the Heating Element.

Remove the screws circled in red to disconnect the bluetooth speaker set from the inner top panel. Unplug the bluetooth speaker set and replace it with a new bluetooth speaker set.



**RECOMMENDED:** Record the connections by taking a photo before removing and installing the Bluetooth speaker set.

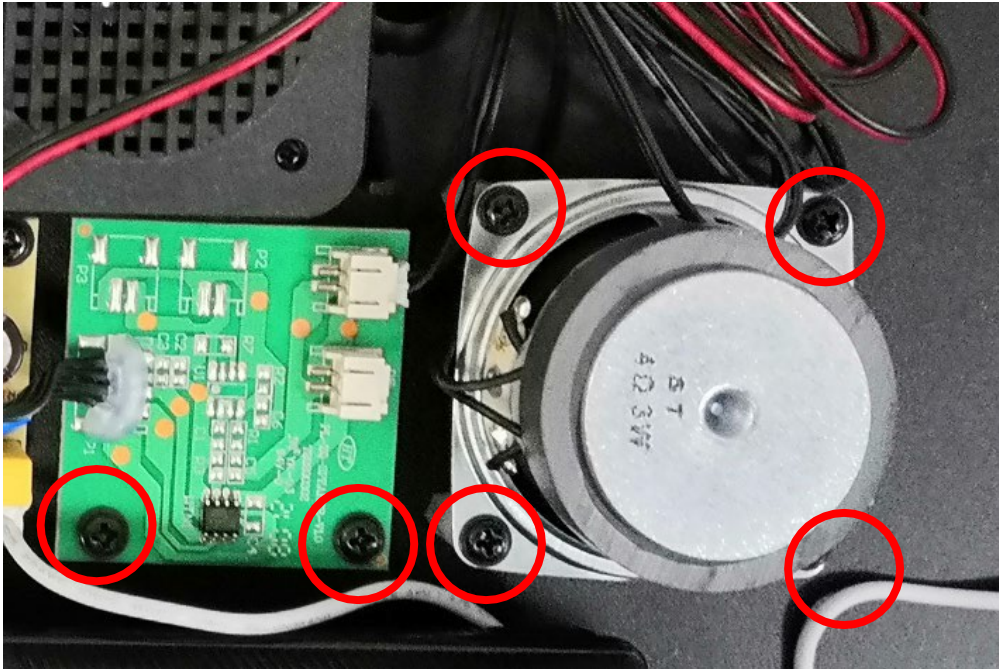
Bluetooth Speaker Set



# Replacing The Speaker Set

Follow STEP 1 in Replacing the Heating Element.

Remove the screws circled in red to disconnect the speaker set from the inner top panel. Unplug the speaker set and replace it with a new speaker set.



**RECOMMENDED:**  
Record the connections  
by taking a photo before  
removing and installing  
the speaker set.