

Fix your Fireplace



E50 E70

Amantii
Electric Fireplaces

Contents

- [How to replace LED light](#)
- [How to replace flicker motor](#)
- [How to replace the heating element](#)
- [How to replace the PCB board](#)
- [How to replace the signal receiver](#)
- [How to replace the canopy light](#)

Replace LED light for ember bed

STEP 1

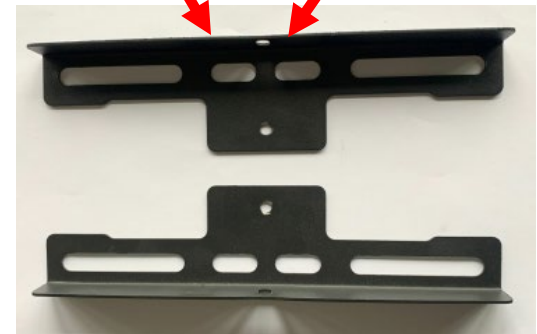
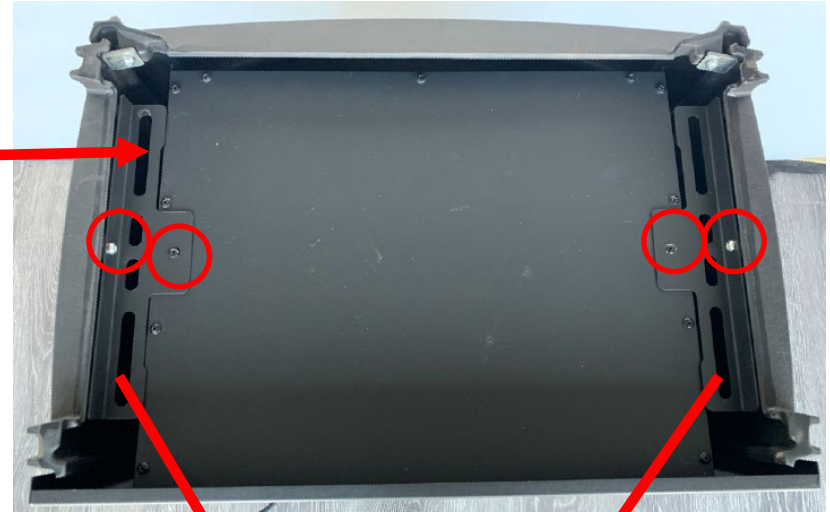


Take off the Top cover from the fireplace.



STEP 2

Unscrew two screws on each side to remove 2 connecting metal pieces



metal piece

STEP 3

After 2 connecting metal pieces are removed, you can take the inner body

NOTE: 2 people are needed to hold the outer body in case the parts fall apart and hurt people.



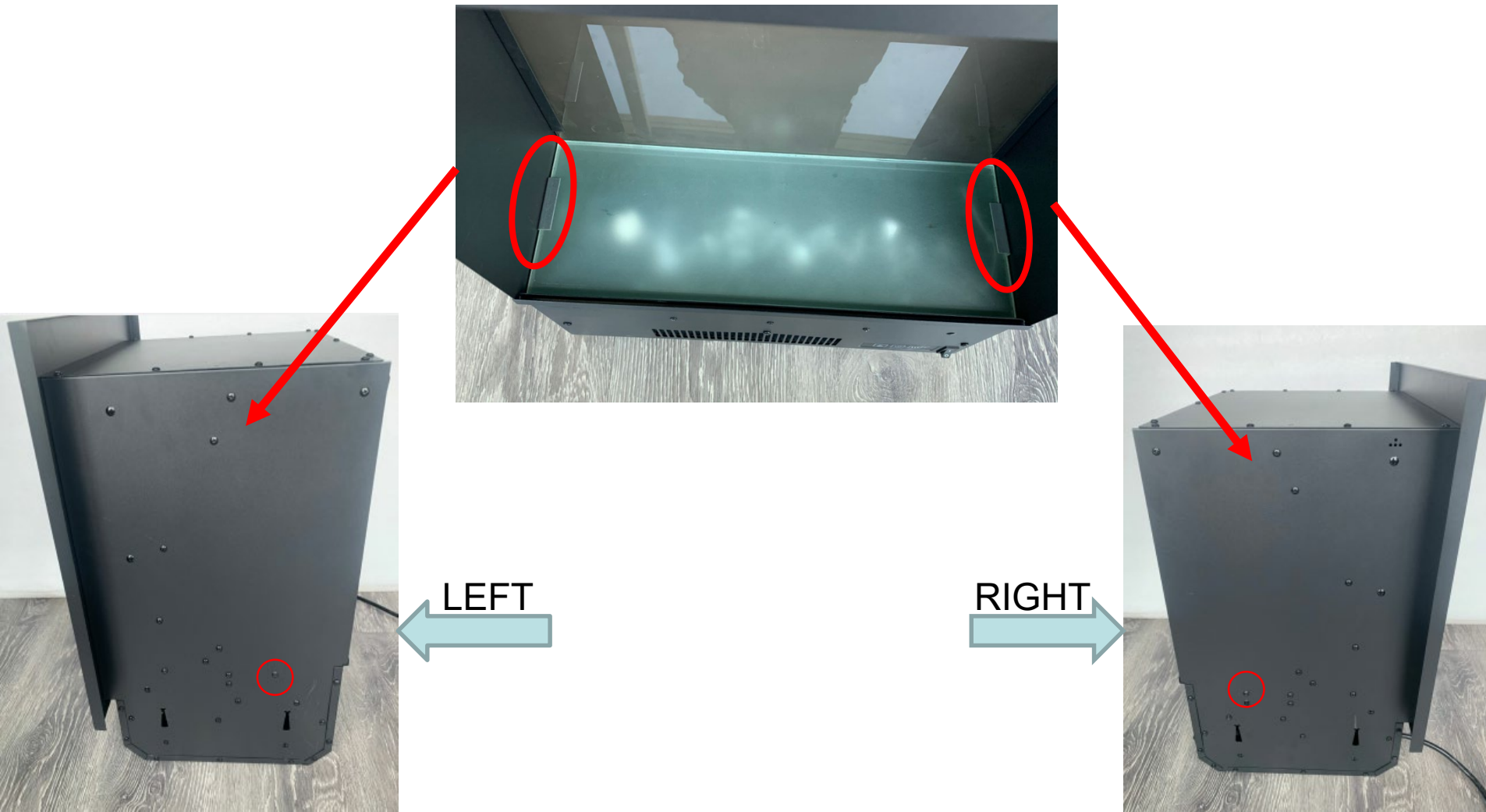
STEP 4



Unscrew 2 screws and take off the front glass panel.

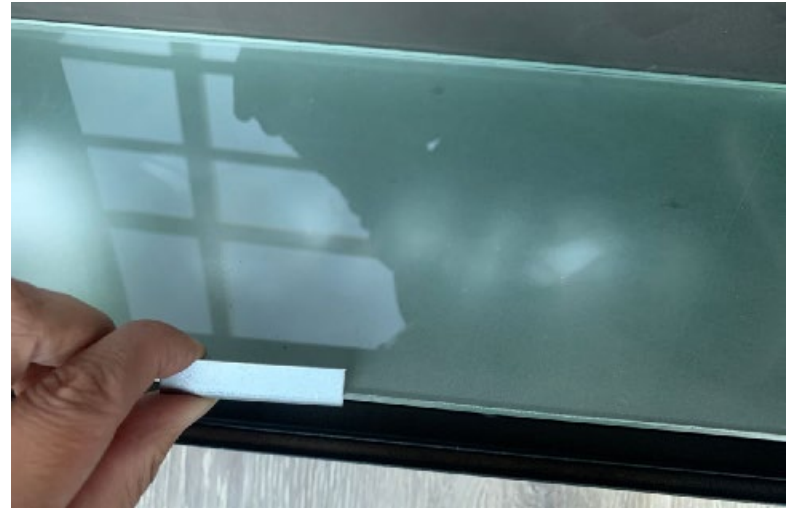
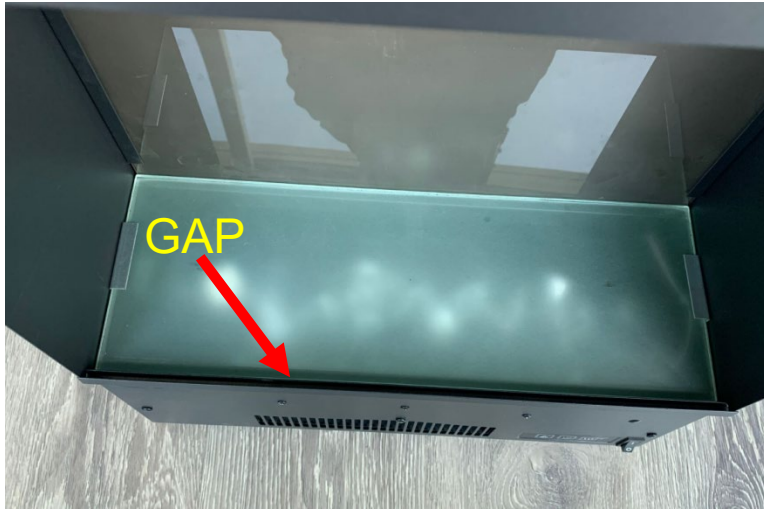
STEP 5

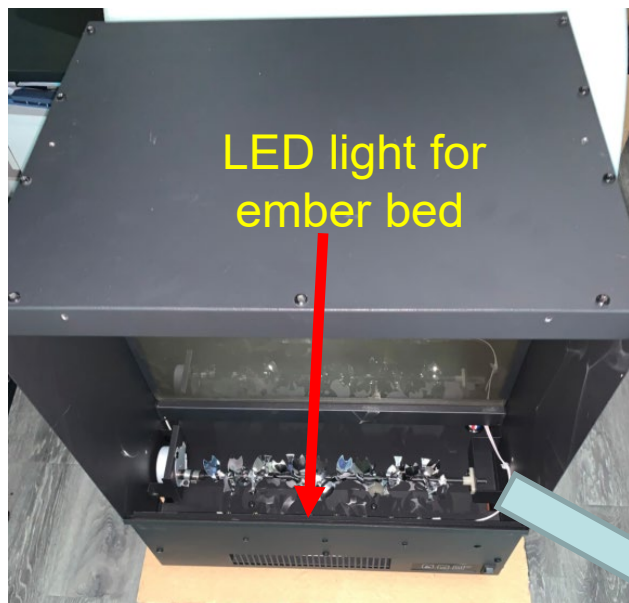
Unscrew 1 screw on each side to take off the metal pieces fixing ember bed glass



STEP 6

Insert the ember bed glass fixing metal piece into the gap between ember bed glass and the front ember bed glass holder, and then hook it upwards to take off the ember bed glass panel.

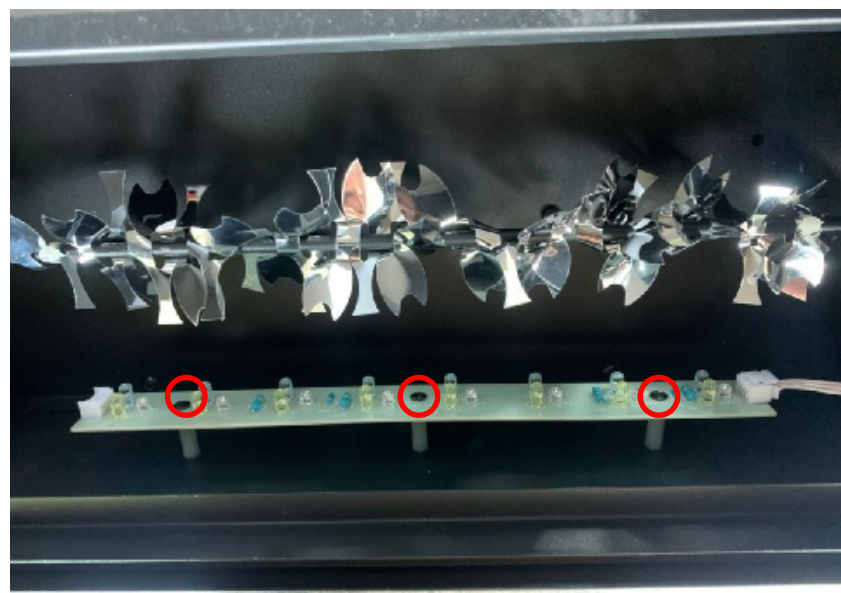




STEP 7

Unscrew the screws to replace the LED ligh.

Zoom view



Replace LED light for flame light

Step 1



Take off the Top cover from the fireplace.



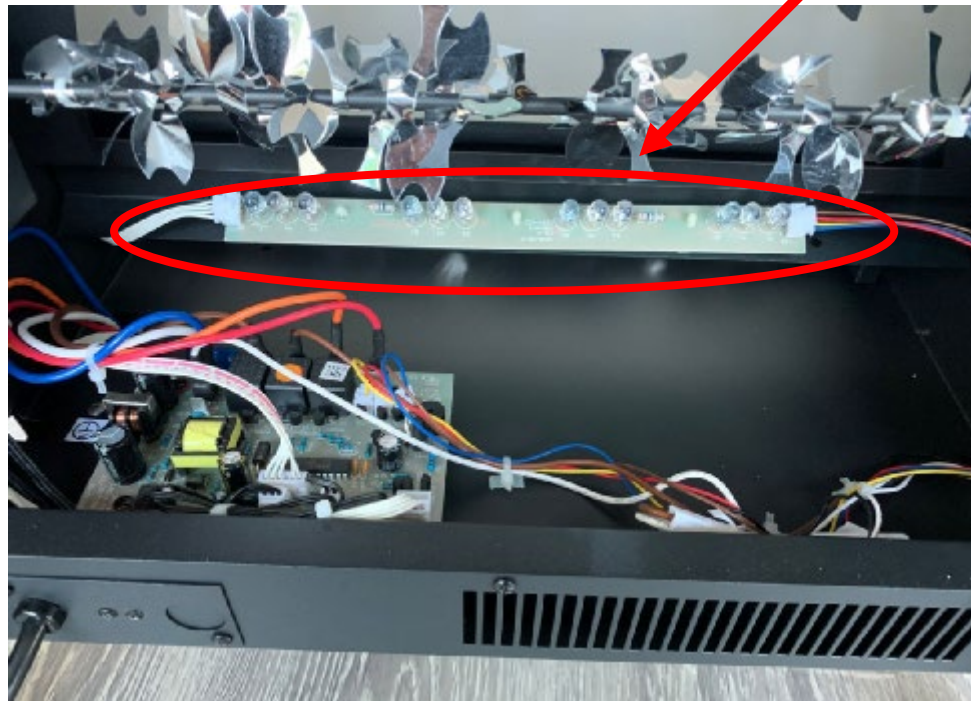
STEP 2

Unscrew the screws to take off the back steel panel.



STEP 3

When the back cover is removed , you can see the LED light for the flame.
Replace it for a new one.



Replace ember bed flicker motor

STEP 1

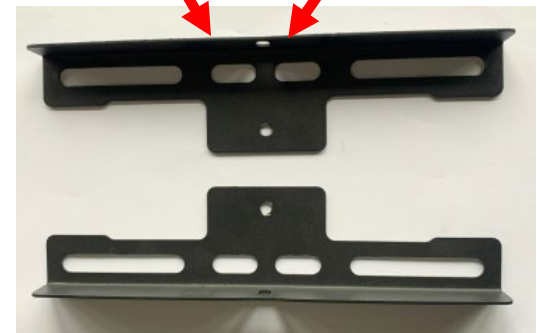
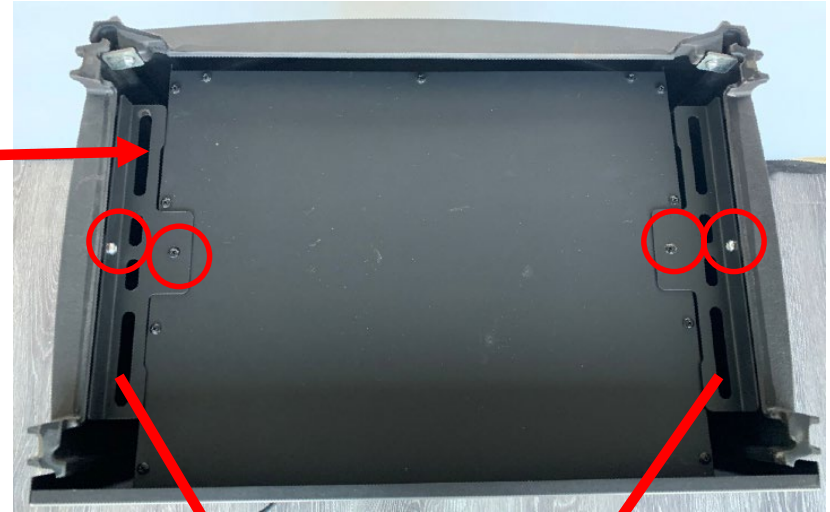


Take off the Top cover from the fireplace.



STEP 2

Unscrew two screws on each side to remove 2 connecting metal pieces



metal piece

STEP 3

After 2 connecting metal pieces are removed, you can take the inner body

NOTE: 2 people are needed to hold the outer body in case the parts fall apart and hurt people.



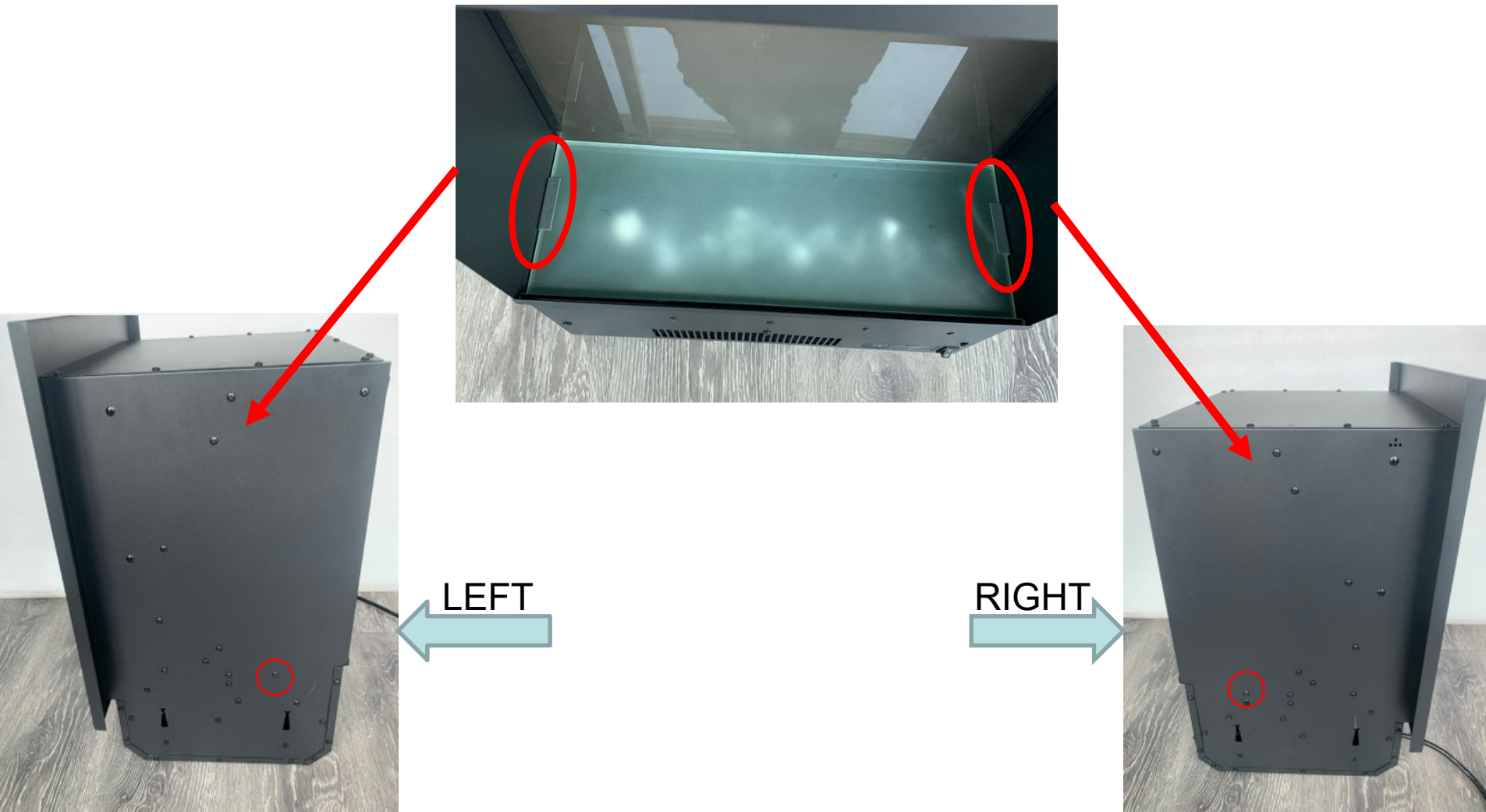
STEP 4



Unscrew 2 screws and take off the front glass panel.

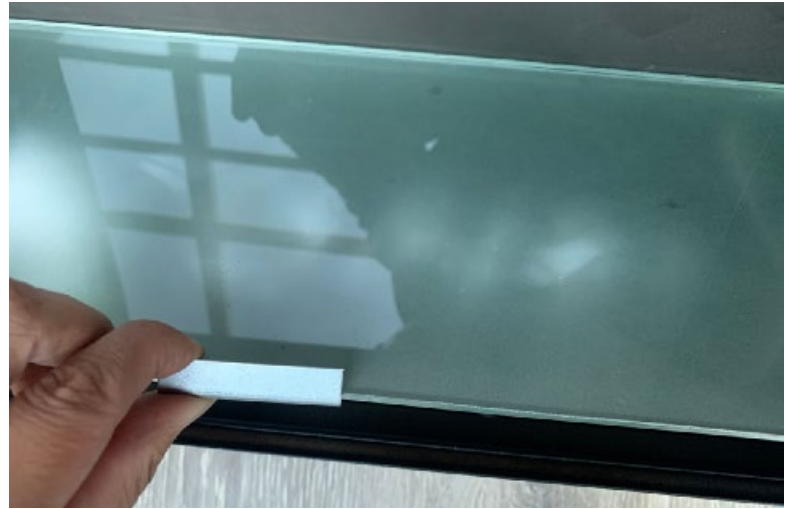
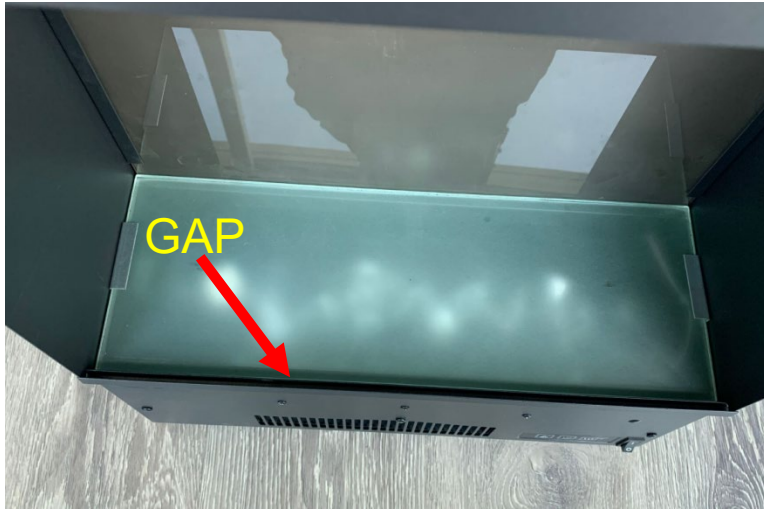
STEP 5

Unscrew 1 screw on each side to take off the metal pieces fixing ember bed glass



STEP 6

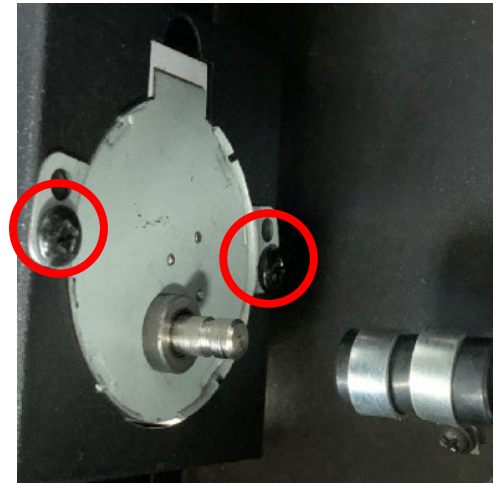
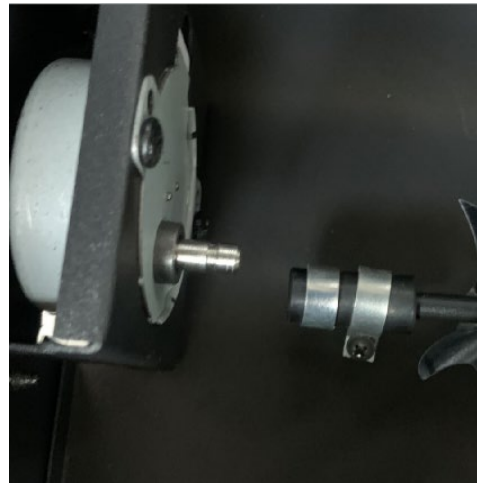
Insert the ember bed glass fixing metal piece into the gap between ember bed glass and the front ember bed glass holder, and then hook it upwards to take Off the ember bed glass panel.



STEP 7



Unscrew the screw and then disconnect the flicker rod from the motor



Unscrew the screws to take off the motor from the fireplace

Replace flame effect flicker motor

STEP 1



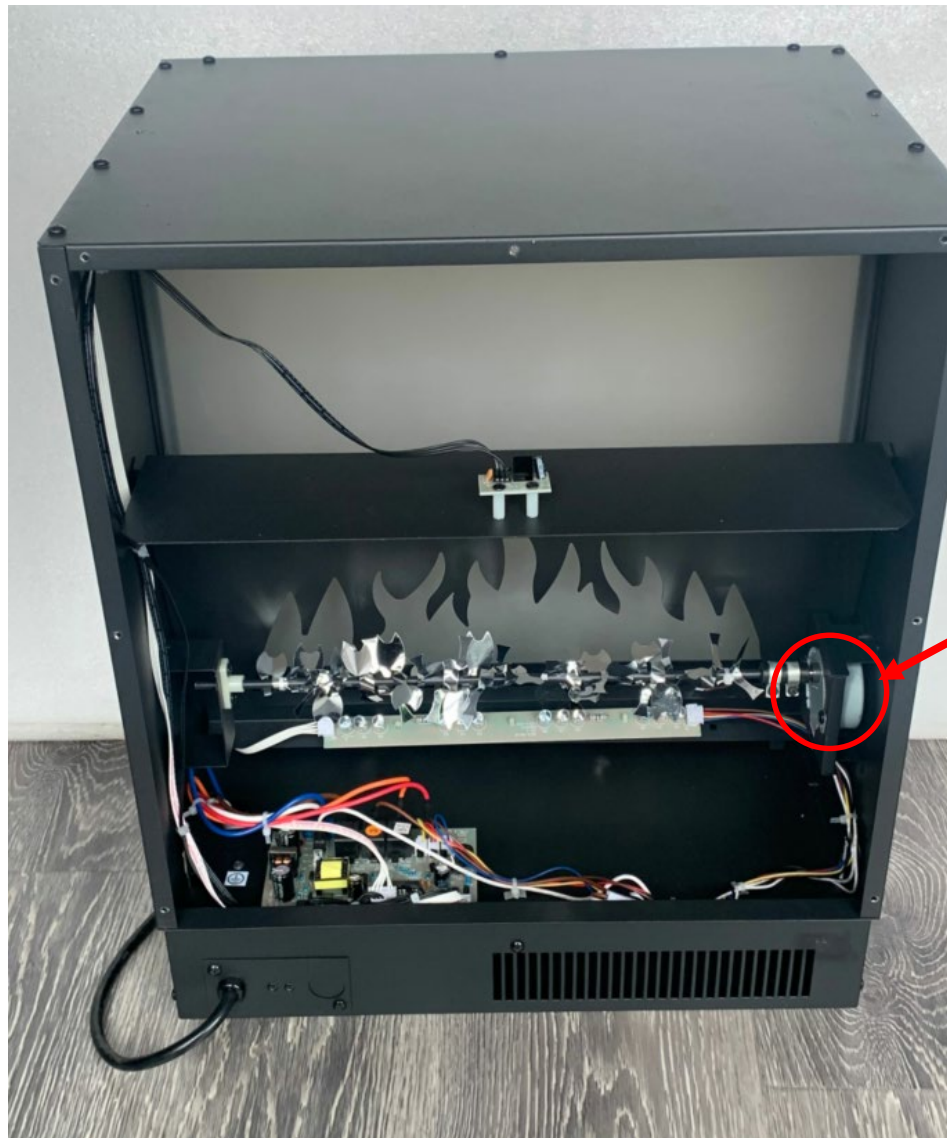
Take off the Top cover from the fireplace.



STEP 2

Unscrew the screws to take off the back steel panel.

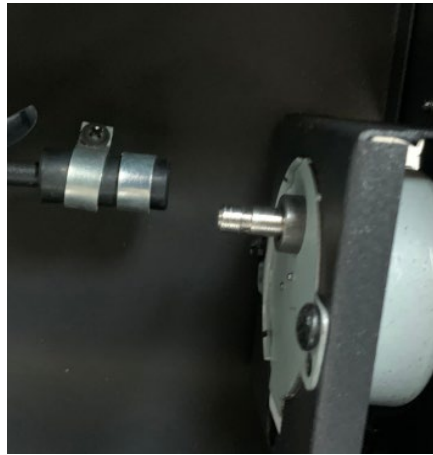




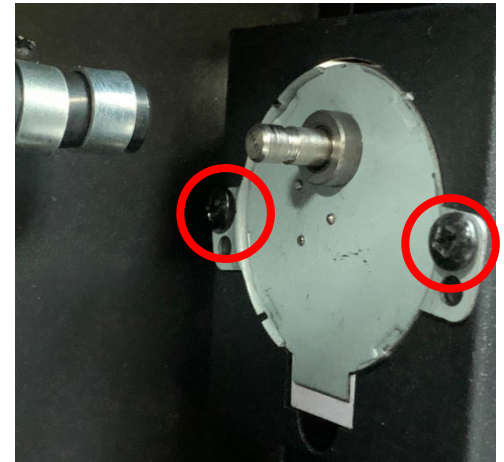
Flame motor
Lies here

STEP 3

Unscrew the screw and then disconnect the flicker rod from the motor



Unscrew the screws to take off the motor from the fireplace



Replace the heating element

Step 1

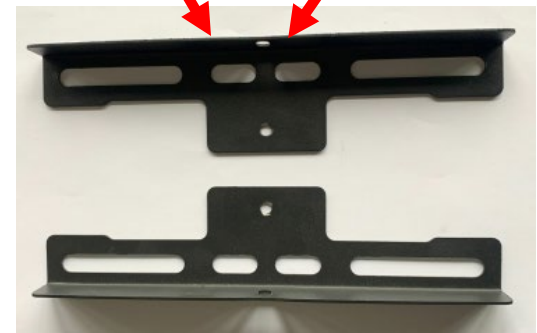
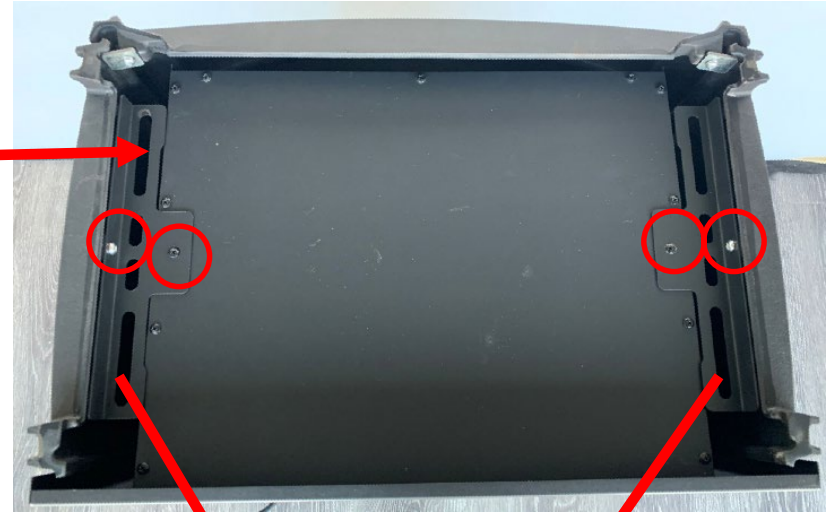


Take off the Top cover from the fireplace.



STEP 2

Unscrew two screws on each side to remove 2 connecting metal pieces



metal piece

STEP 3

After 2 connecting metal pieces are removed, you can take the inner body

NOTE: 2 people are needed to hold the outer body in case the parts fall apart and hurt people.



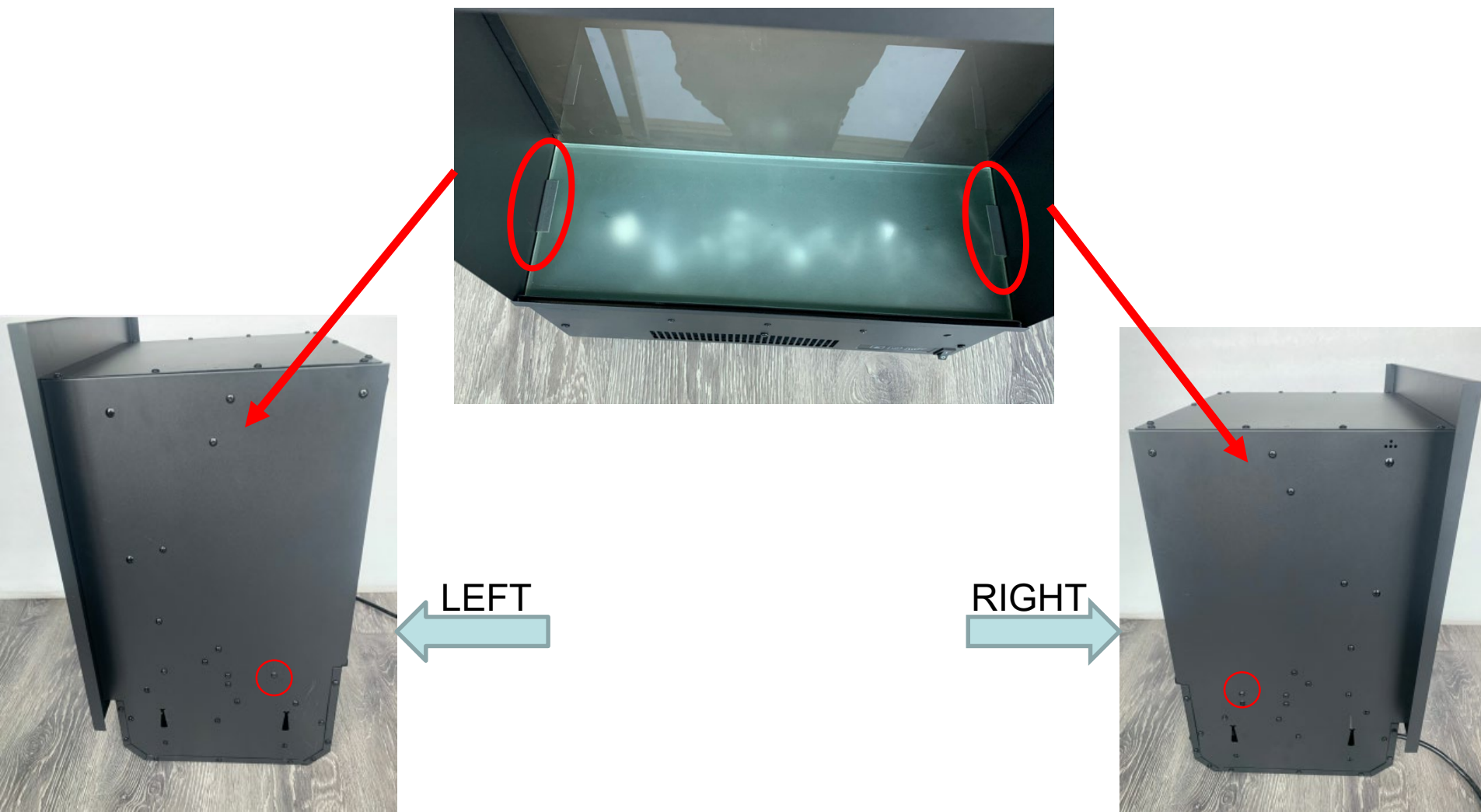
STEP 4



Unscrew 2 screws and take off the front glass panel.

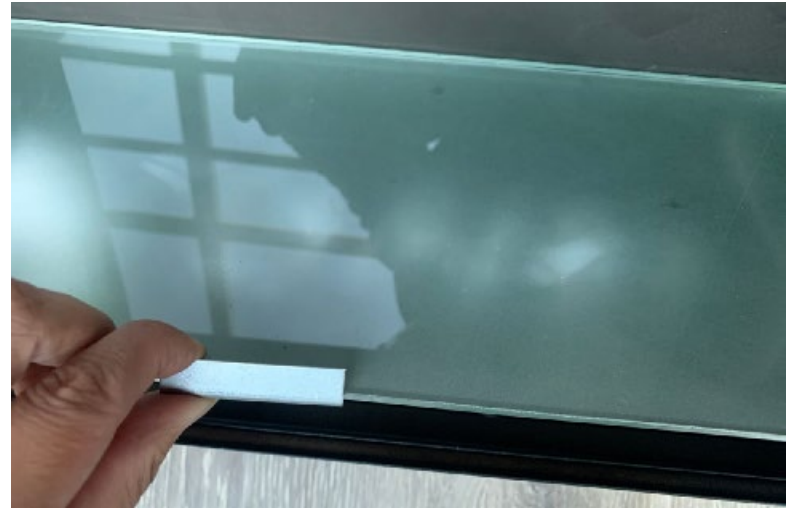
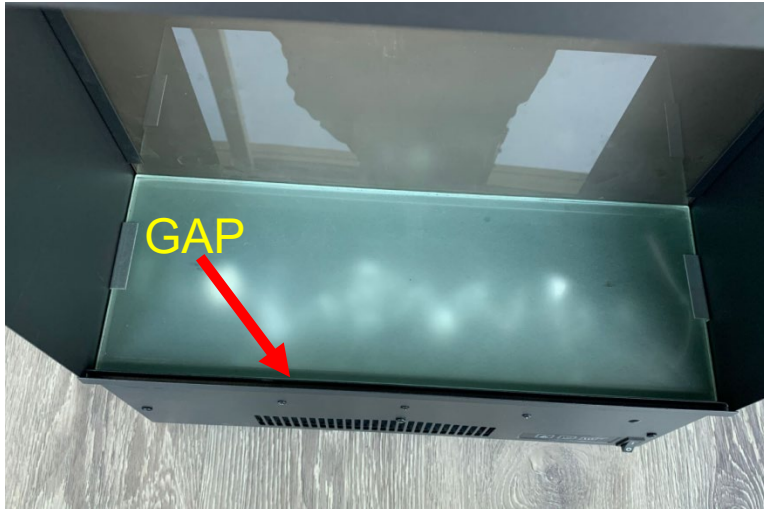
STEP 5

Unscrew 1 screw on each side to take off the metal pieces fixing ember bed glass



STEP 6

Insert the ember bed glass fixing metal piece into the gap between ember bed glass and the front ember bed glass holder, and then hook it upwards to take Off the ember bed glass panel.



STEP 7

Unscrew the screws to take off the back steel panel.



STEP 8

Unscrew the screws on left
and right cover



LEFT



RIGHT

STEP 9 Unscrew the screws on bottom cover



STEP 10 Unscrew the screw back bottom cover



STEP 11

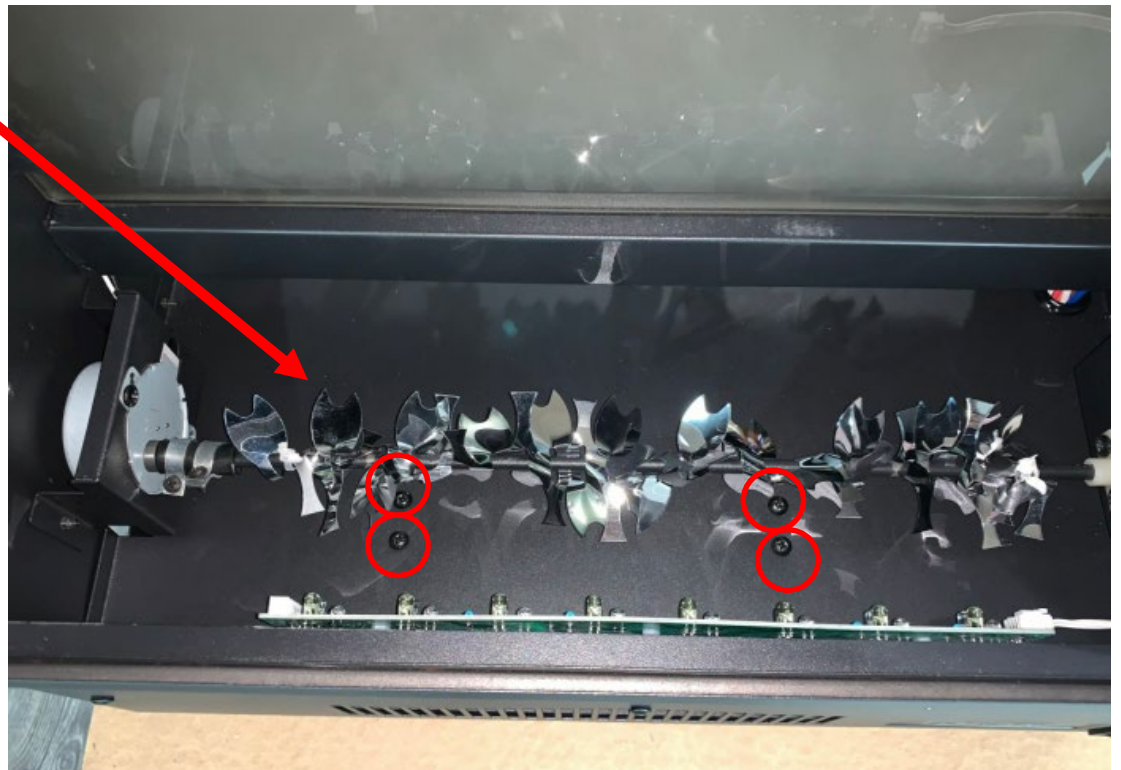
After the screws are taken off from STEP 8 to STEP 10, now you can remove the bottom cover and the heating element locates here.





STEP 12

Unscrew the 4 screws to replace the heating element.



Replace the PCB board

Step 1



Take the Top cover from the fireplace.



STEP 2

Unscrew the screws to take off the back steel panel.

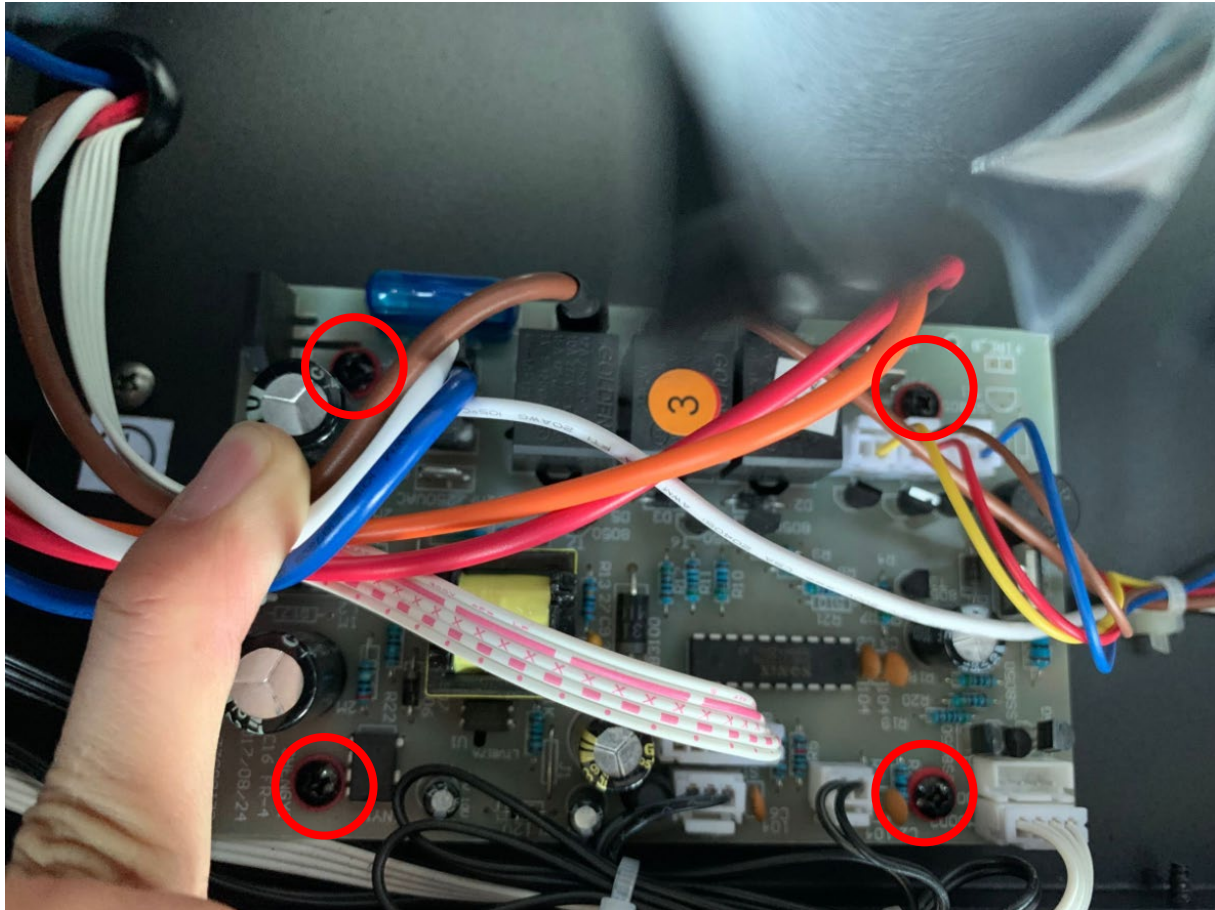


PCB Board
lies here



STEP 3

Unscrew the 4 screws to replace the PCB board.



Replace the signal receiver

Step 1



Take off the Top cover from the fireplace.

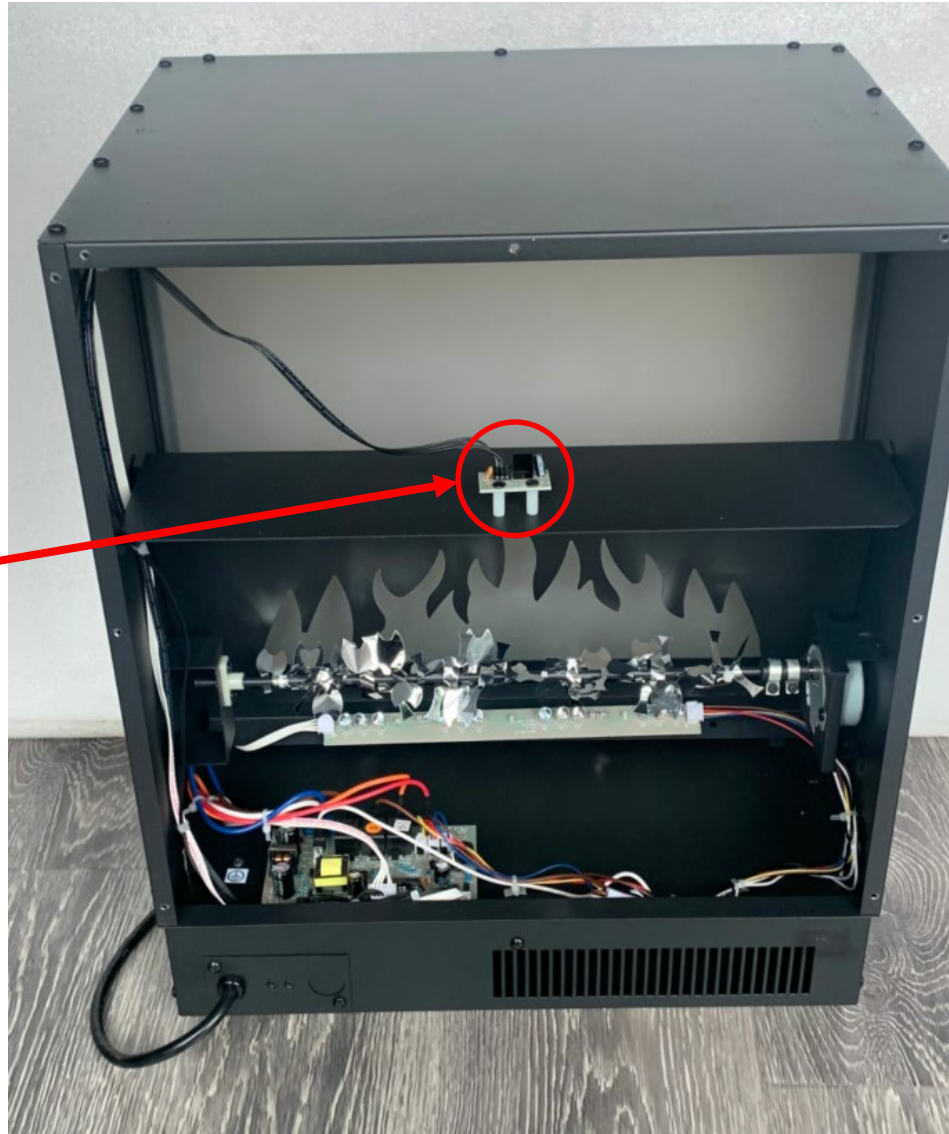


STEP 2

Unscrew the screws to take off the back steel panel.

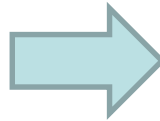
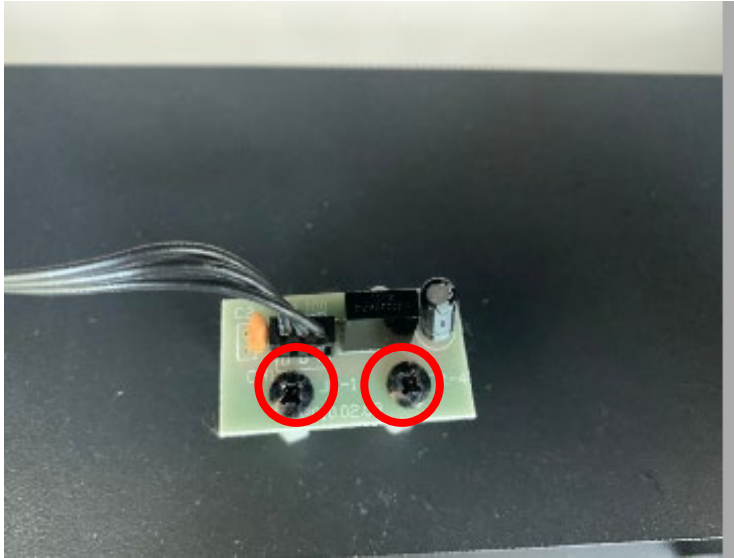


Signal Receiver
lies here

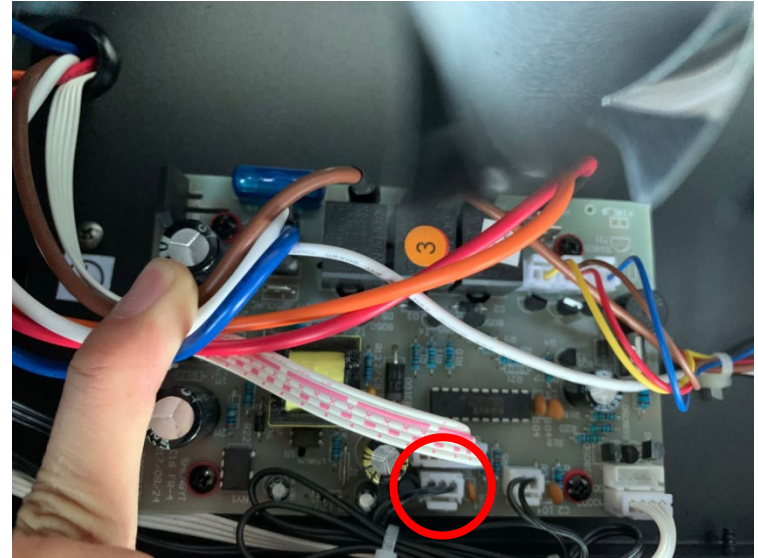


STEP 4

Unscrew the 2 screws.



Unplug to replace the signal receiver



Replace the canopy light

Step 1

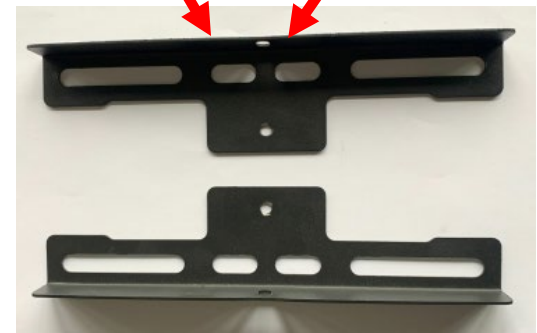
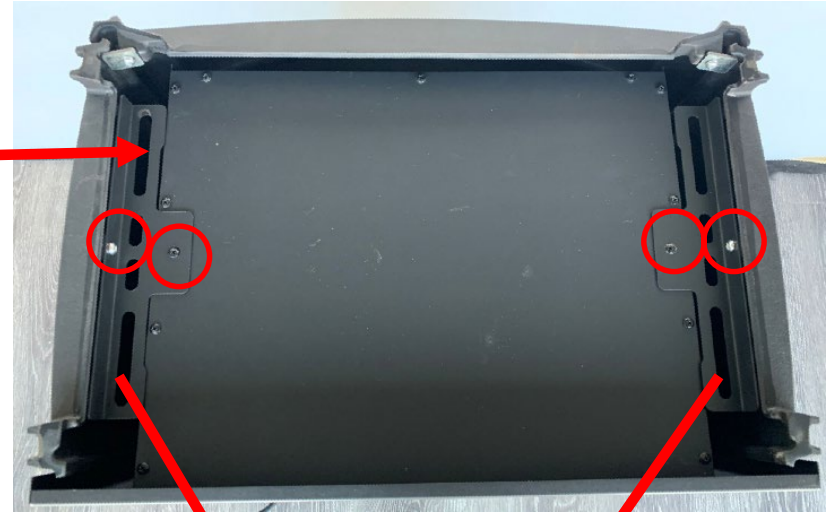


Take the Top cover from the fireplace.



STEP 2

Unscrew two screws on each side to remove 2 connecting metal pieces



metal piece

STEP 3

After 2 connecting metal pieces are removed, you can take the inner body

NOTE: 2 people are needed to hold the outer body in case the parts fall apart and hurt people.



STEP 4



Unscrew 2 screws and take off the front glass panel.

STEP 5 Unscrew the screws to take off the top cover.





STEP 6

Unscrew the 2 screws to replace the canopy light

