

Repair Guide



SYM XT Series

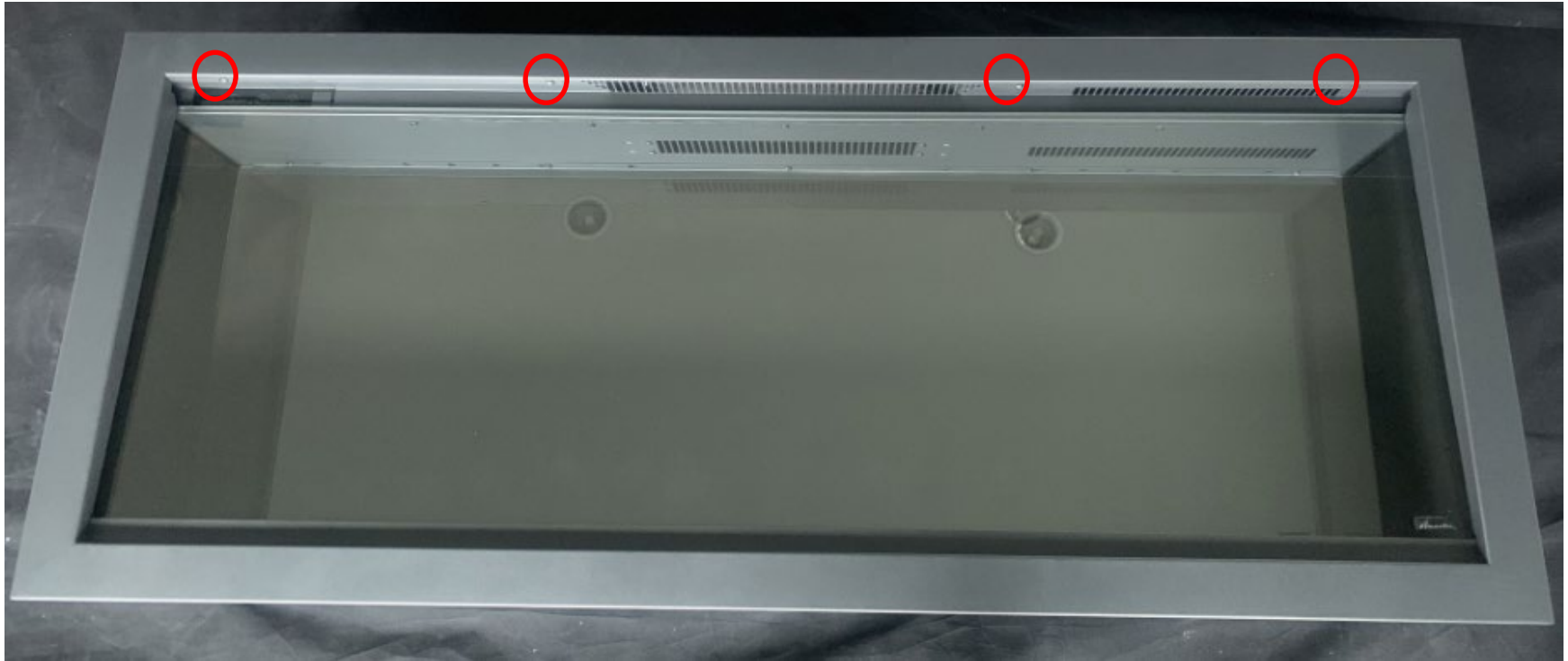
Amantii
Electric Fireplaces

Content

- [How to replace LED light](#)
- [How to replace flicker motor](#)
- [How to replace heating element](#)
- [How to replace the PCB board](#)
- [How to replace the signal receiver](#)
- [How to replace the canopy light](#)
- [How to replace the touch panel](#)

Replacing the LED light

Replace ember bed LED light

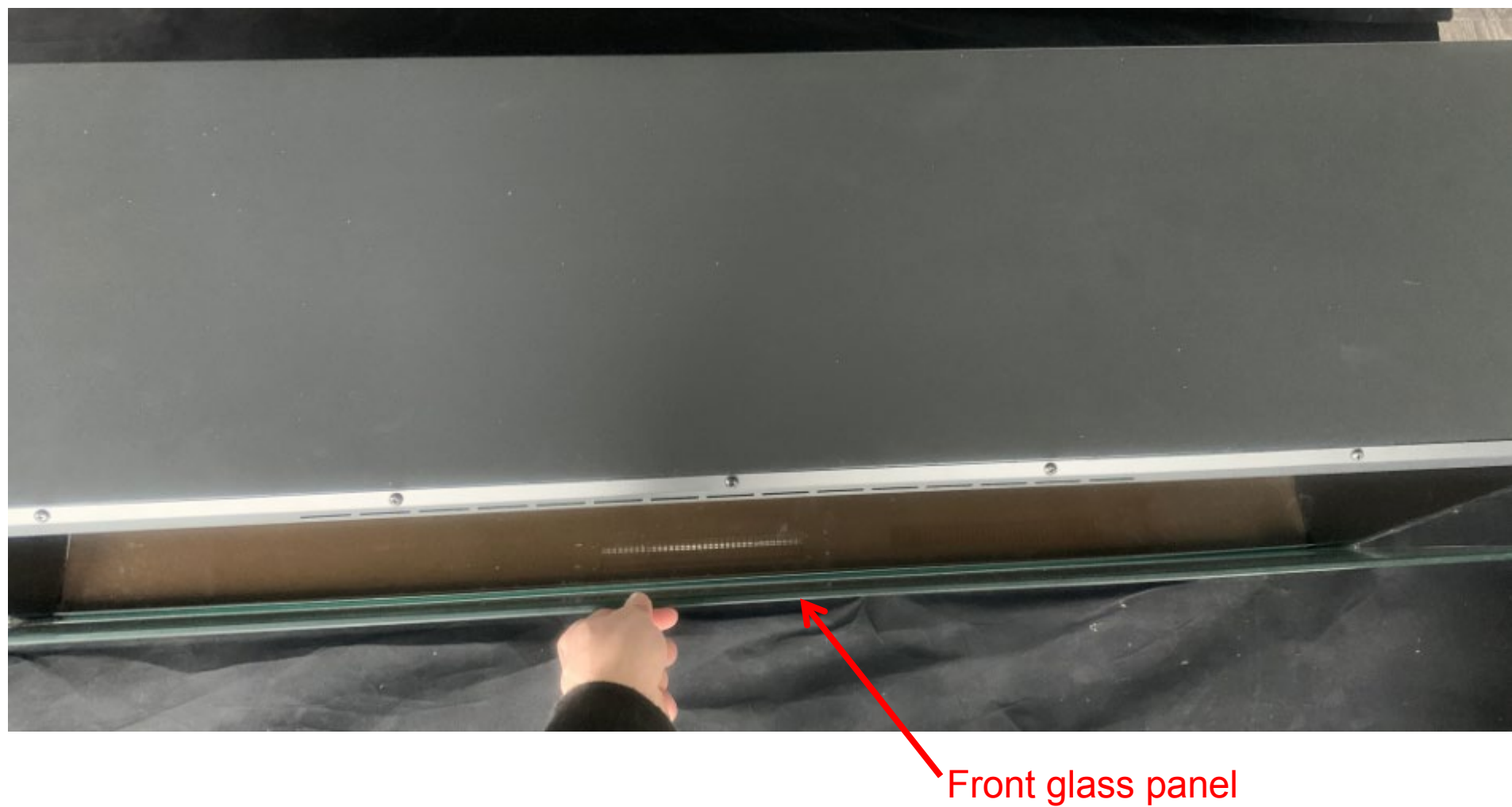


Step 1 Remove the screws circled in red to remove the trim.

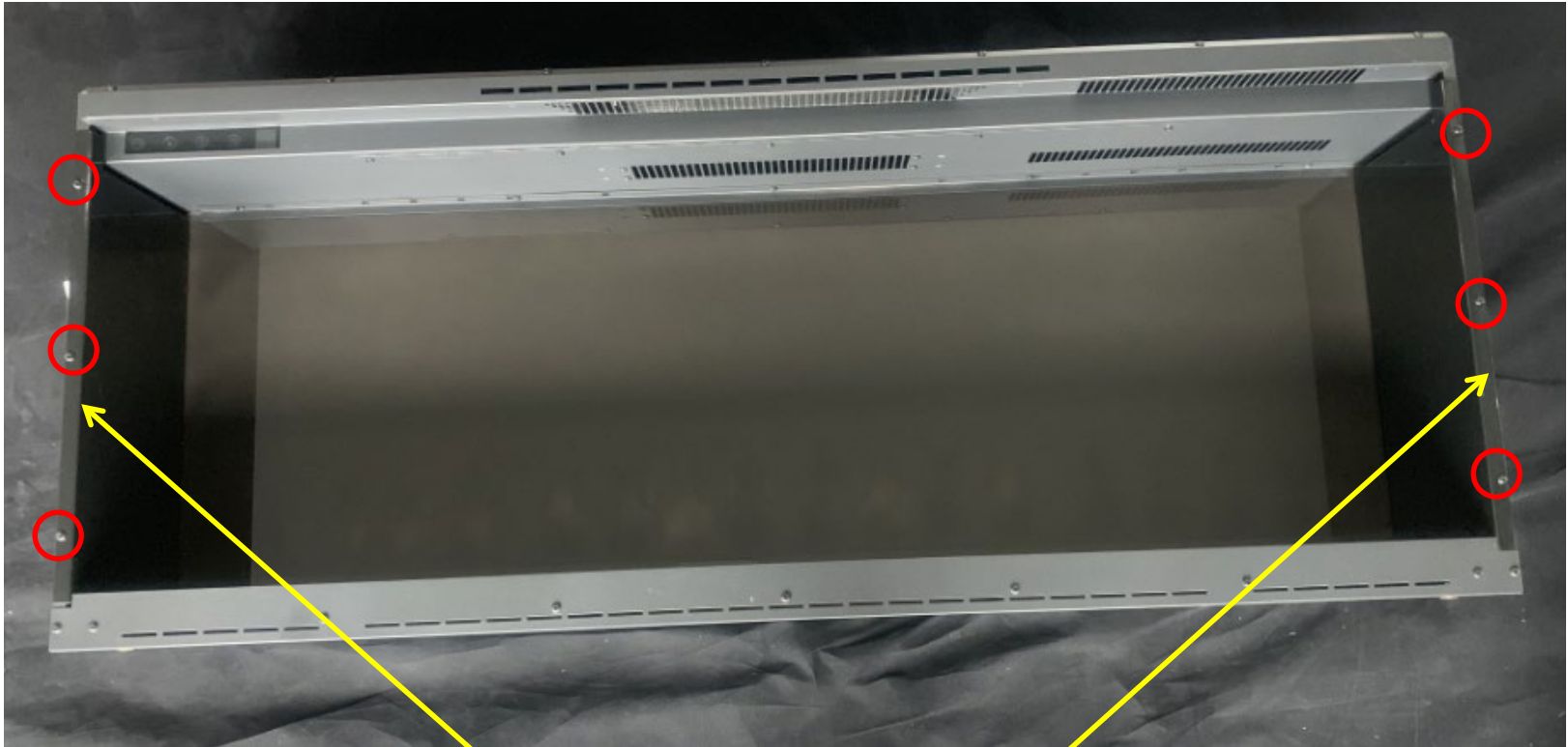


Please note: Magnetic stones are in place to secure the bottom of the trim to the fireplace.

Step 2 After the trim has been removed, safely take off the front glass panel.



Step 3 Remove the screws circled in red to take off the steel panel holding the ember bed glass panel in place



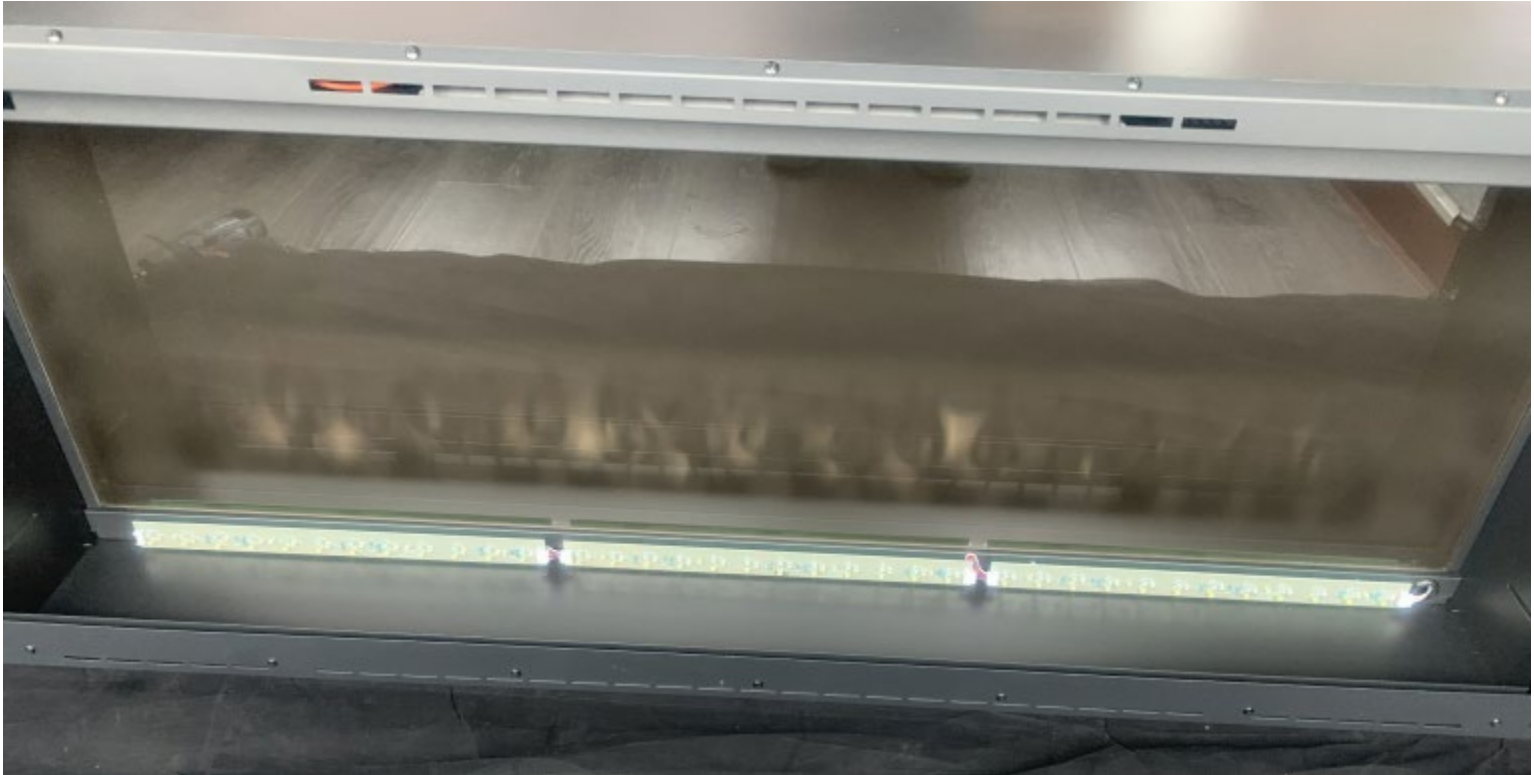
The steel panels

Step 4

After the steel panels have been removed, remove the ember bed glass panel. Please note: Lift one corner of the glass upward for easy removal of the glass. As shown in the diagram below.



The ember bed LED strips are situated below the ember bed glass panel.

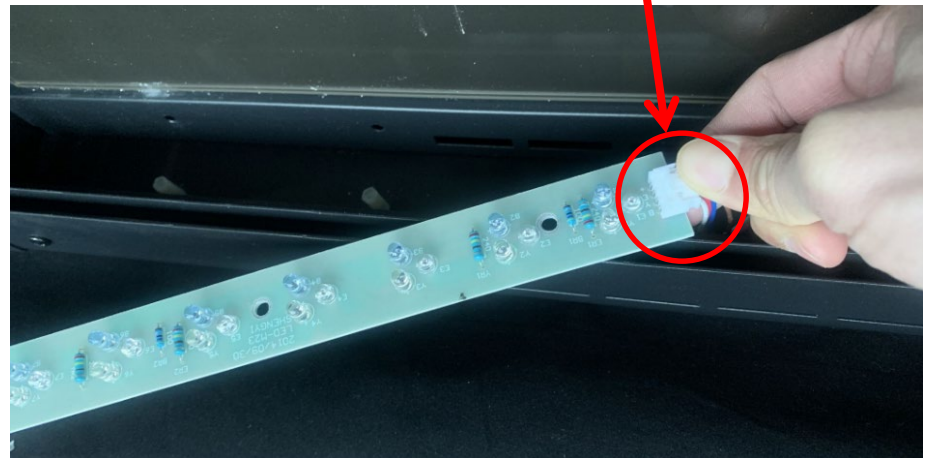


Step 5

Unbuckle the defective LED strip from the hooks that hold it in place and unplug to replace the strip



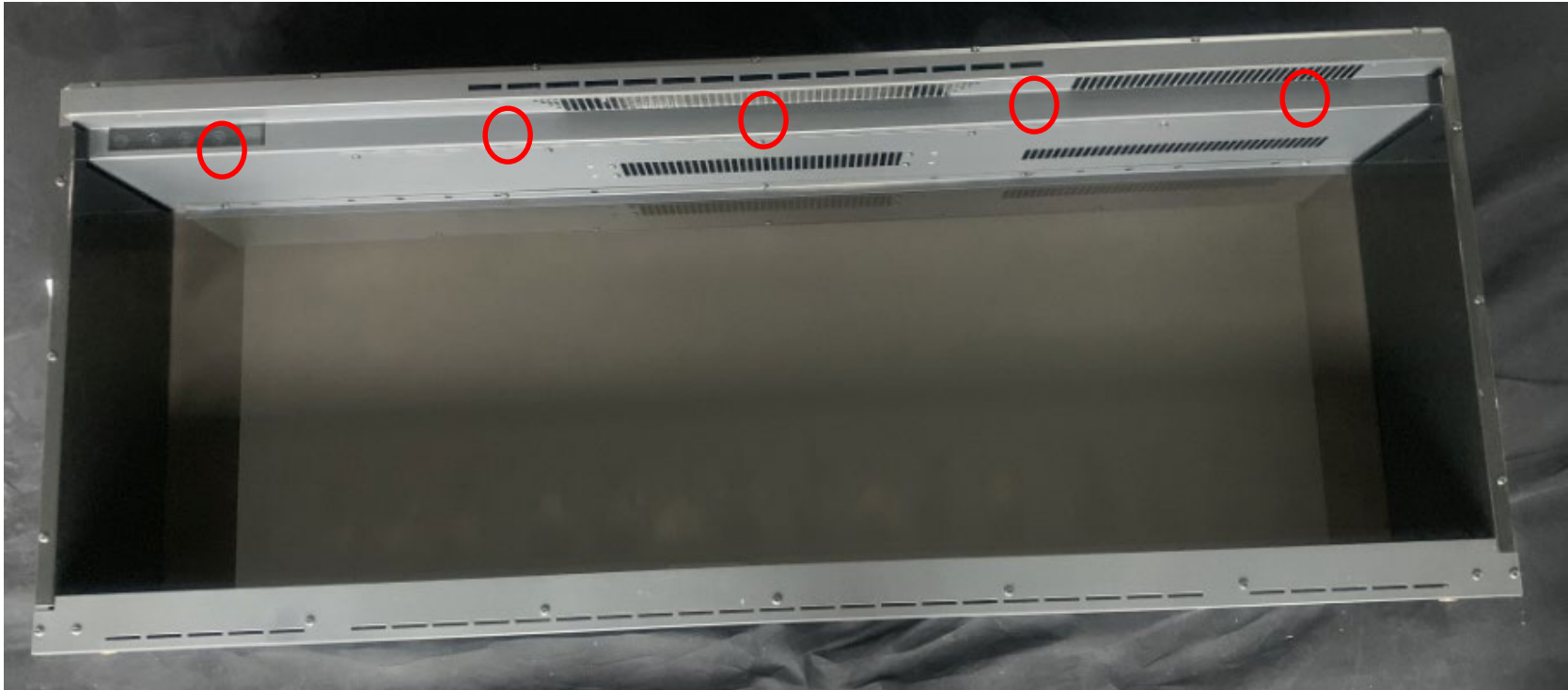
Unbuckle



Unplug

Replacing the flame LED light

Follow steps 1 to 4 from the how to replace the Ember Bed LED light instructions, you will then arrive here



Step 1 Remove the screws circled in red to remove the steel bar holding the back glass and remove the back glass.

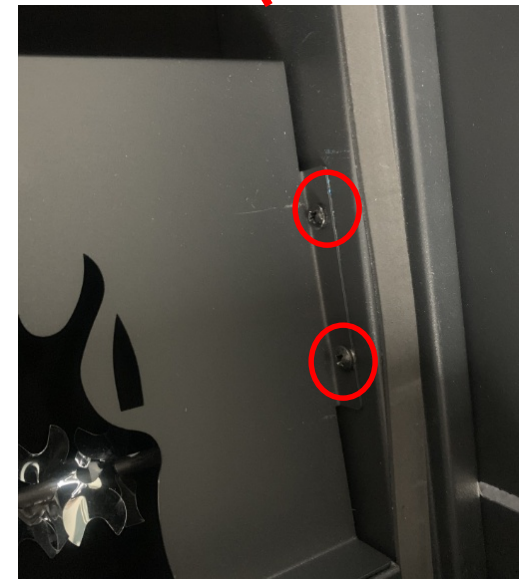


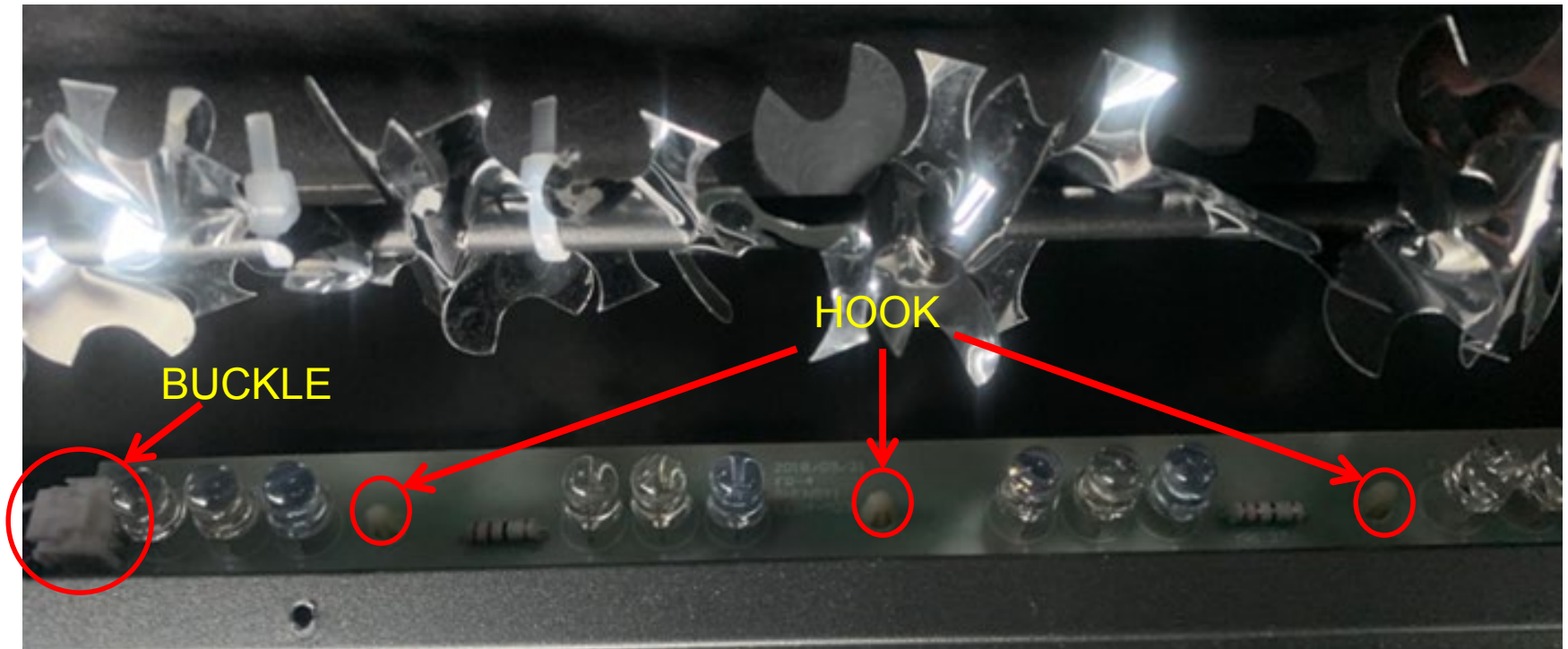
Zoomed View

Zoomed View

Step 2

Remove the screws circled in red to take off the flame effect steel panel.





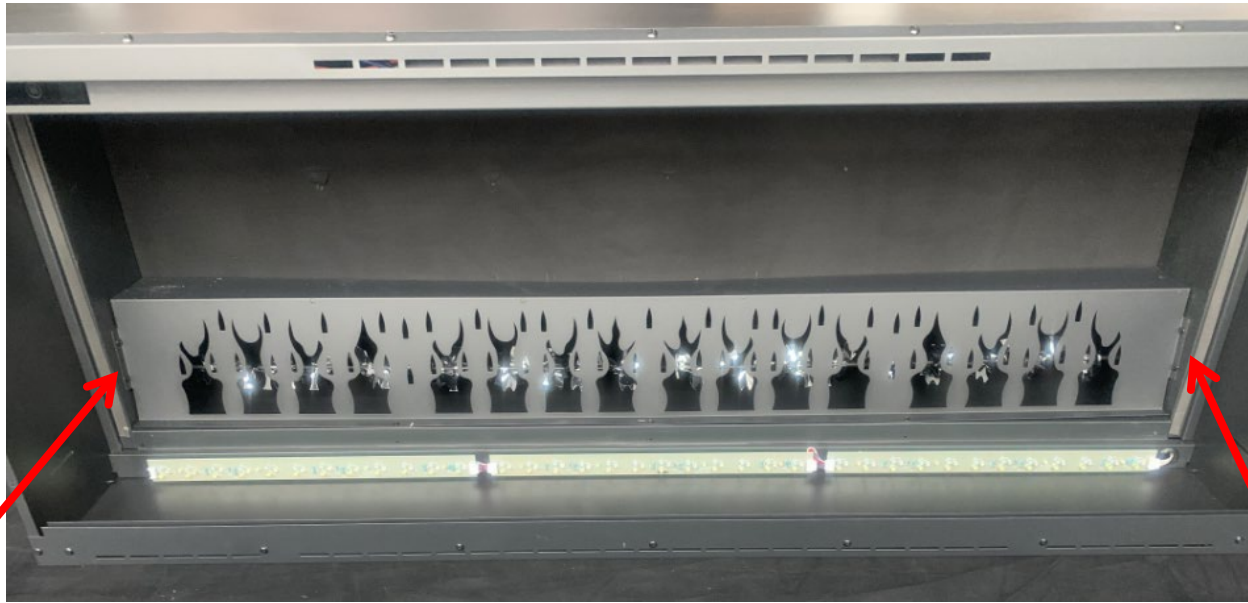
Step 3 Remove the defective LED strip from the hooks and unplug the buckle to replace it with a new one.

Replacing the flicker motor

Follow steps 1 to 4 from the how to replace the Ember Bed LED light instructions, you will then arrive here



Step 1 Remove the screws circled in red to remove the steel bar holding the back glass and remove the back glass.

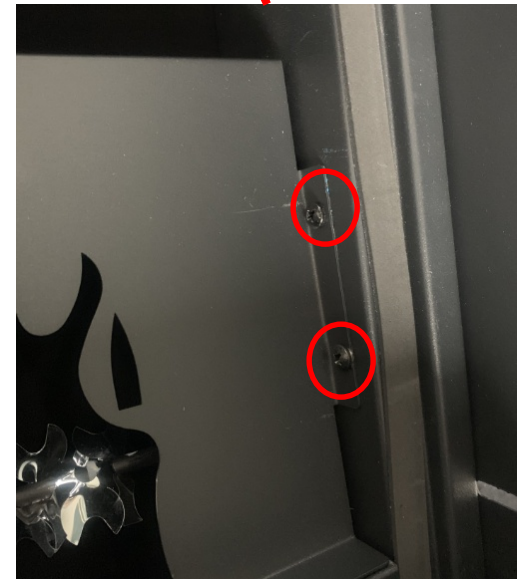


Zoomed View

Zoomed View

Step 2

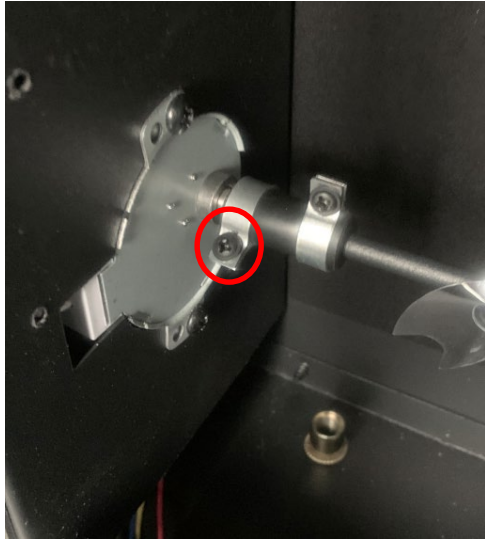
Remove the screws circled in red to remove the flame effect steel template.



After the flame effect steel template has been removed, you will see the flame motor situated on left hand side.

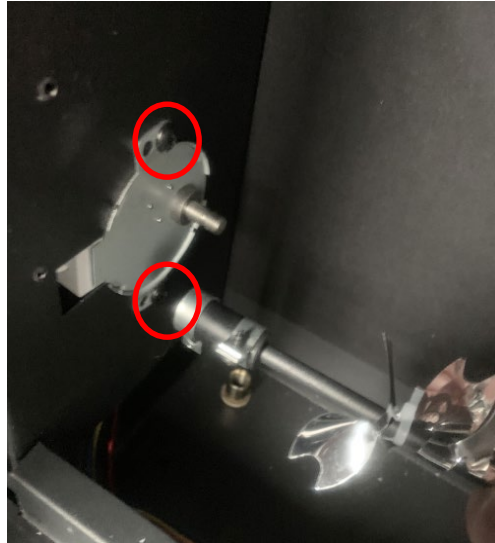


Step 1



Remove the screw and disconnect the motor from flicker rod.

Step 2



Remove the screws and remove the motor from the fireplace

Step 3



Take out the motor and unplug it to insert a new motor

Replacing the heating element

Follow steps 1 to 4 from the how to replace the Ember Bed LED light instructions, you will then arrive here



Step 1

Remove the screws circled in red to remove the steel bar holding the back glass remove the back glass.

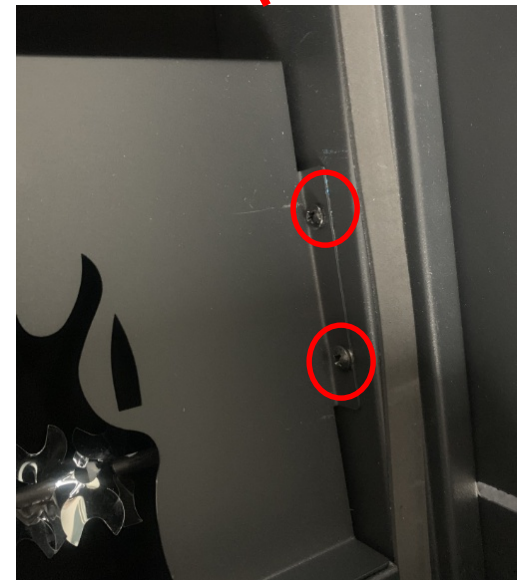


Zoomed View

Zoomed View

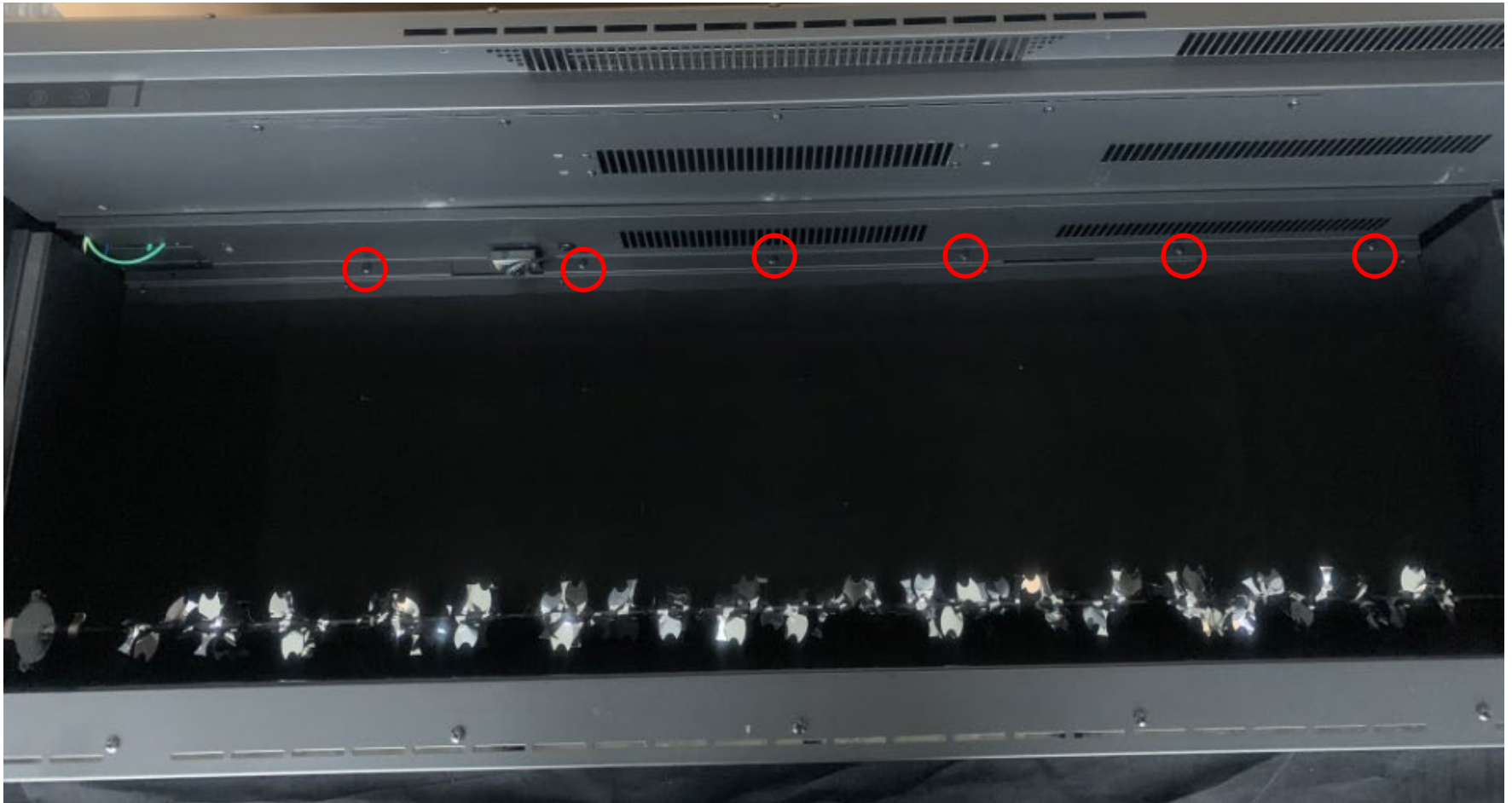
Step 2

Remove the screws circled in red to take off the flame effect steel template

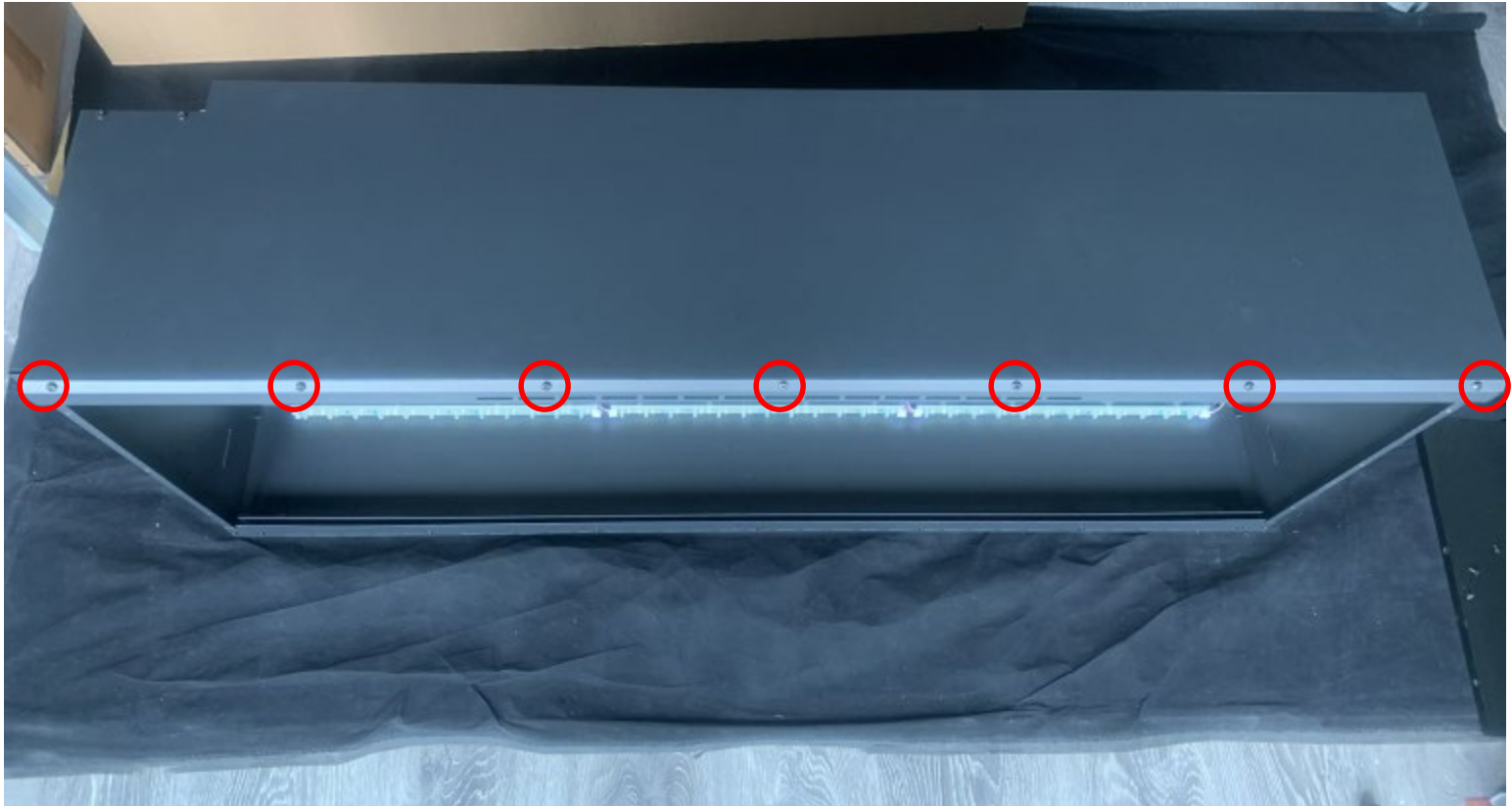


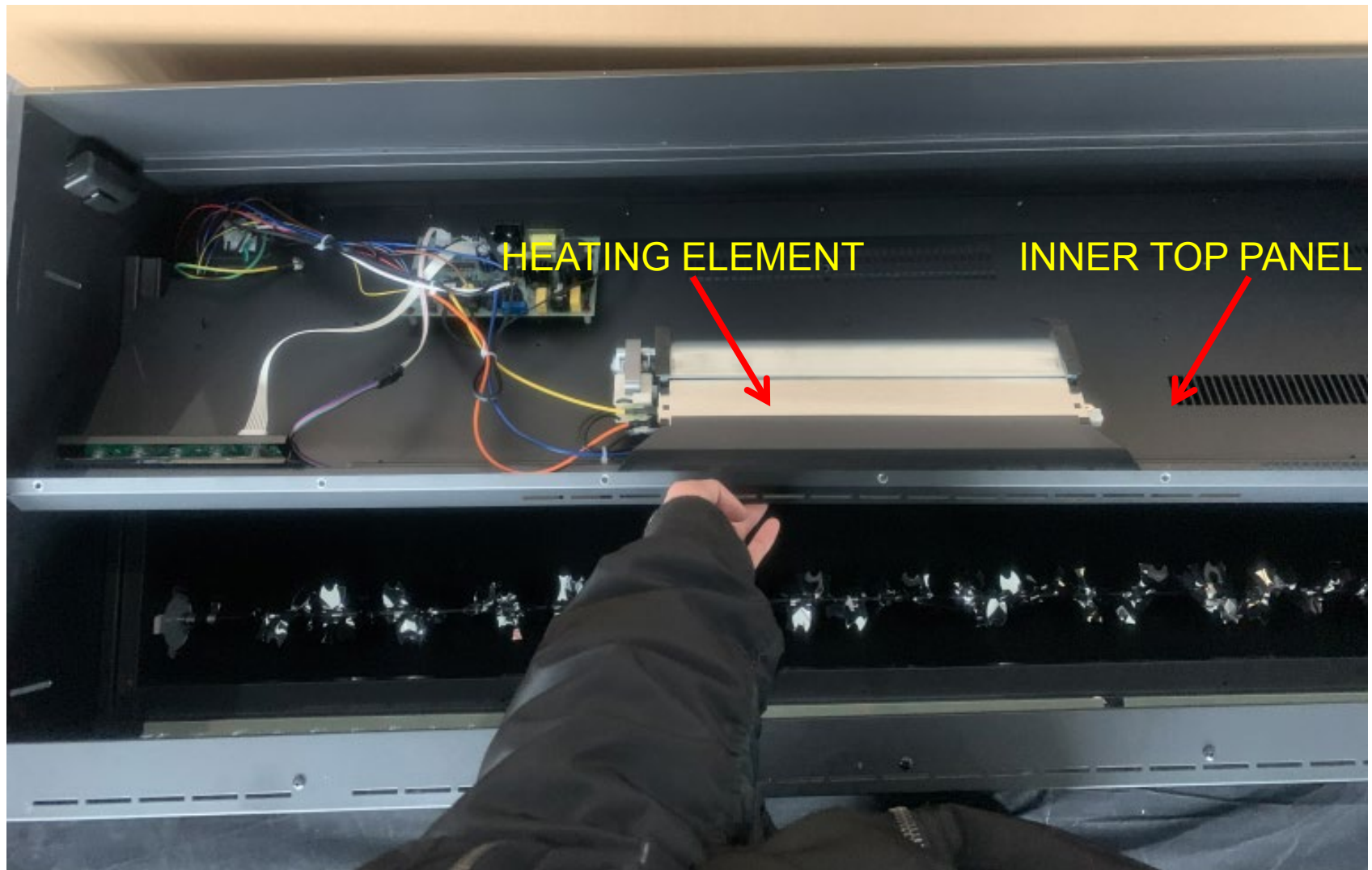
Step 3

Remove the screws circled in red.



Step 4 Remove the screws circled in red to remove the inner top panel. The heating element, PCB board, canopy light and signal receiver are all located here





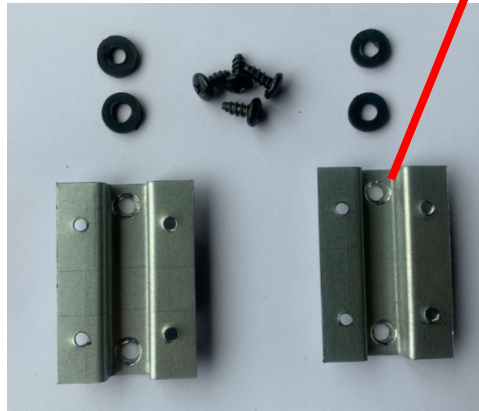
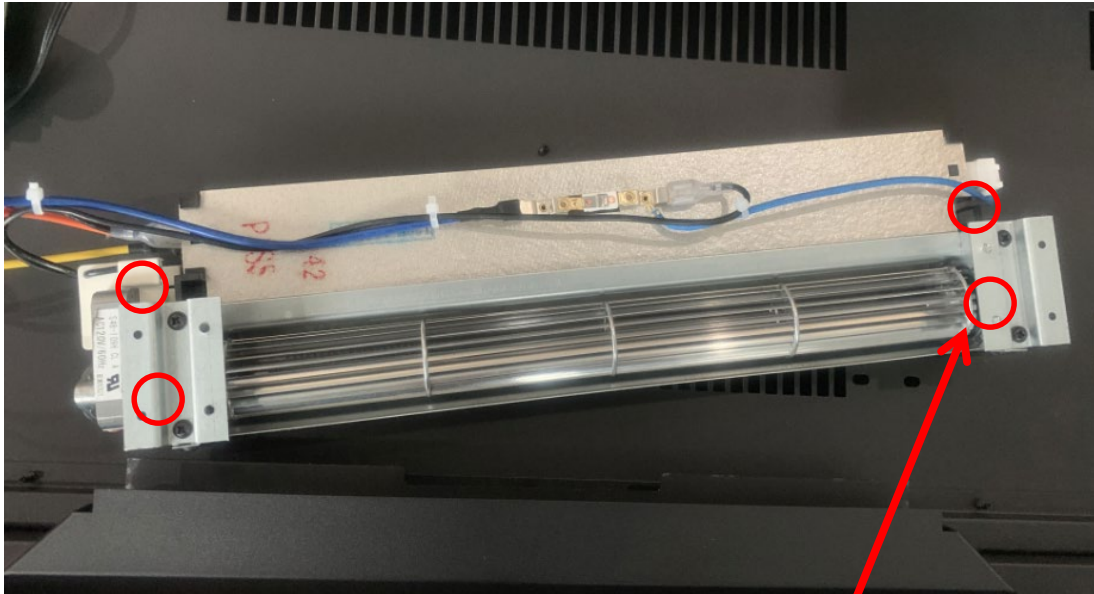
PLEASE NOTE: For the SYM-74/88/100-XT, there are 2 sets of heating elements, one is for the 120V and the other is for the 240V, please replace the right heating element

Step 5 Remove the screws circled in red to remove the heating element assembly from the inner top panel.



Step 6

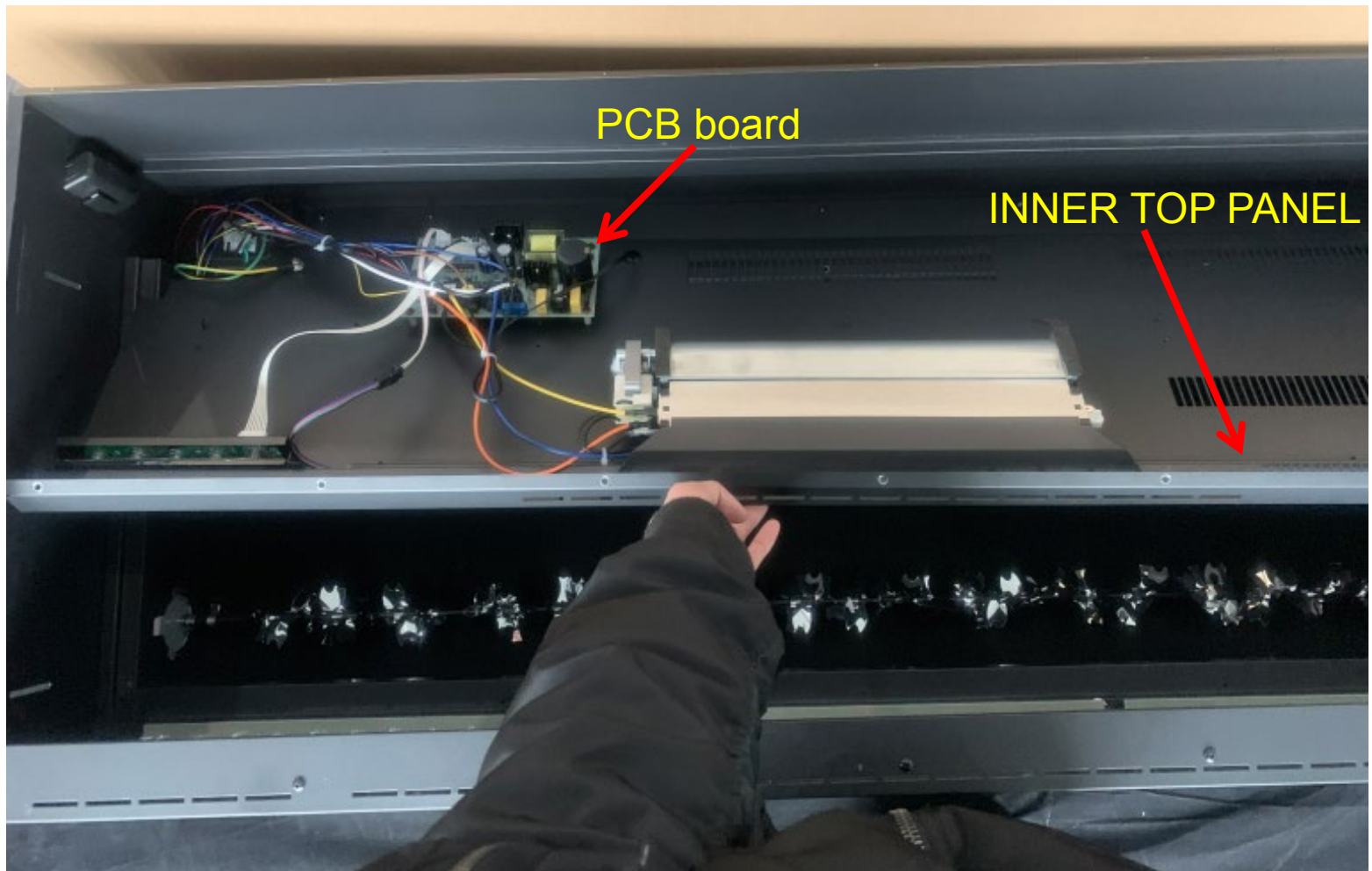
Remove the screws circled in red and remove the metal pieces from the heating element. Unplug the defective heater to replace it with a new heater.



NOTE: Don't forget to put on these rubber circles in same position as you removed.

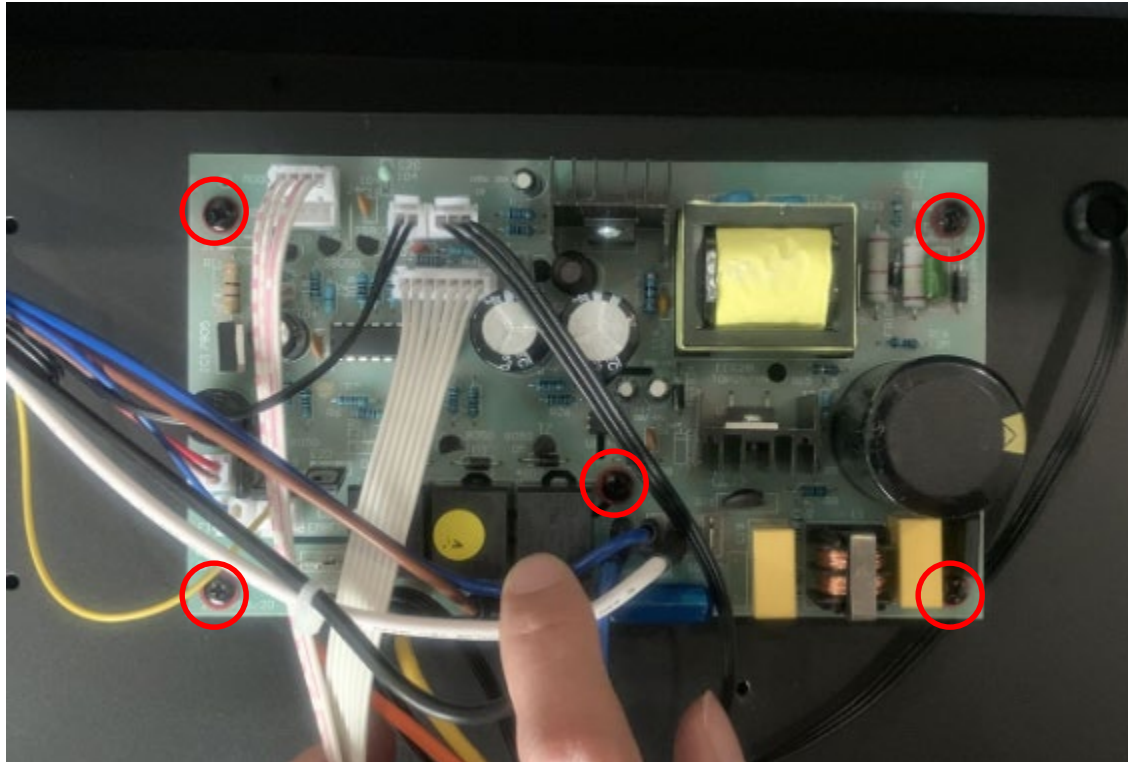
Replacing the PCB board

Follow steps 1 to 4 from replacing the heating element.



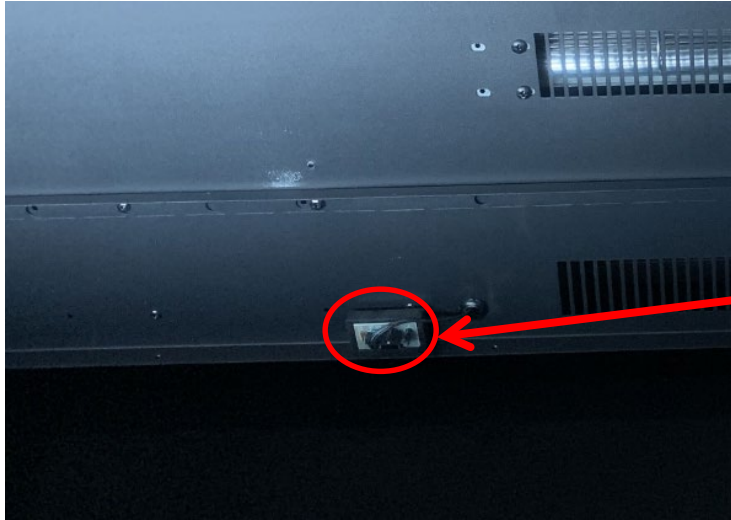
Step 1

Remove the screws circled in red and replace the defective PCB board with a new one.

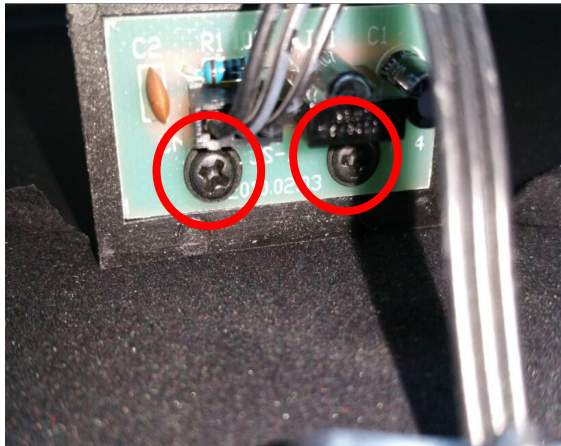


Replacing the signal receiver

Follow steps 1 to 4 from Replace the heating element to remove the inner top panel.



The signal receiver
is situated here

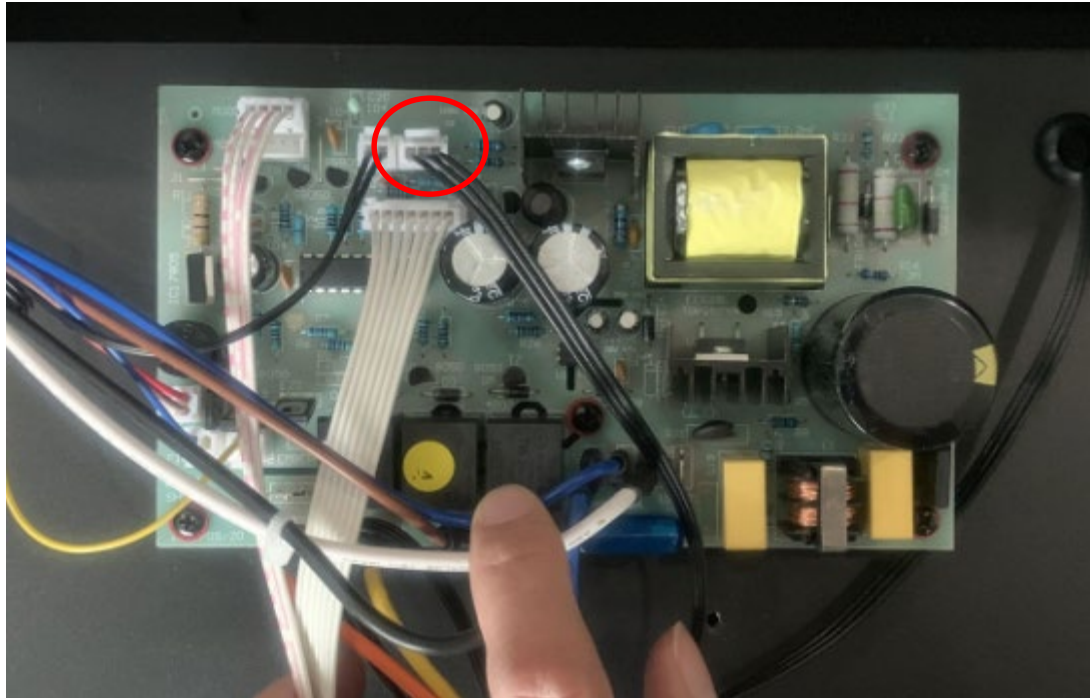


Step 1

Remove the 2 screws located
at the foot of the receiver set
and replace it with a new one.

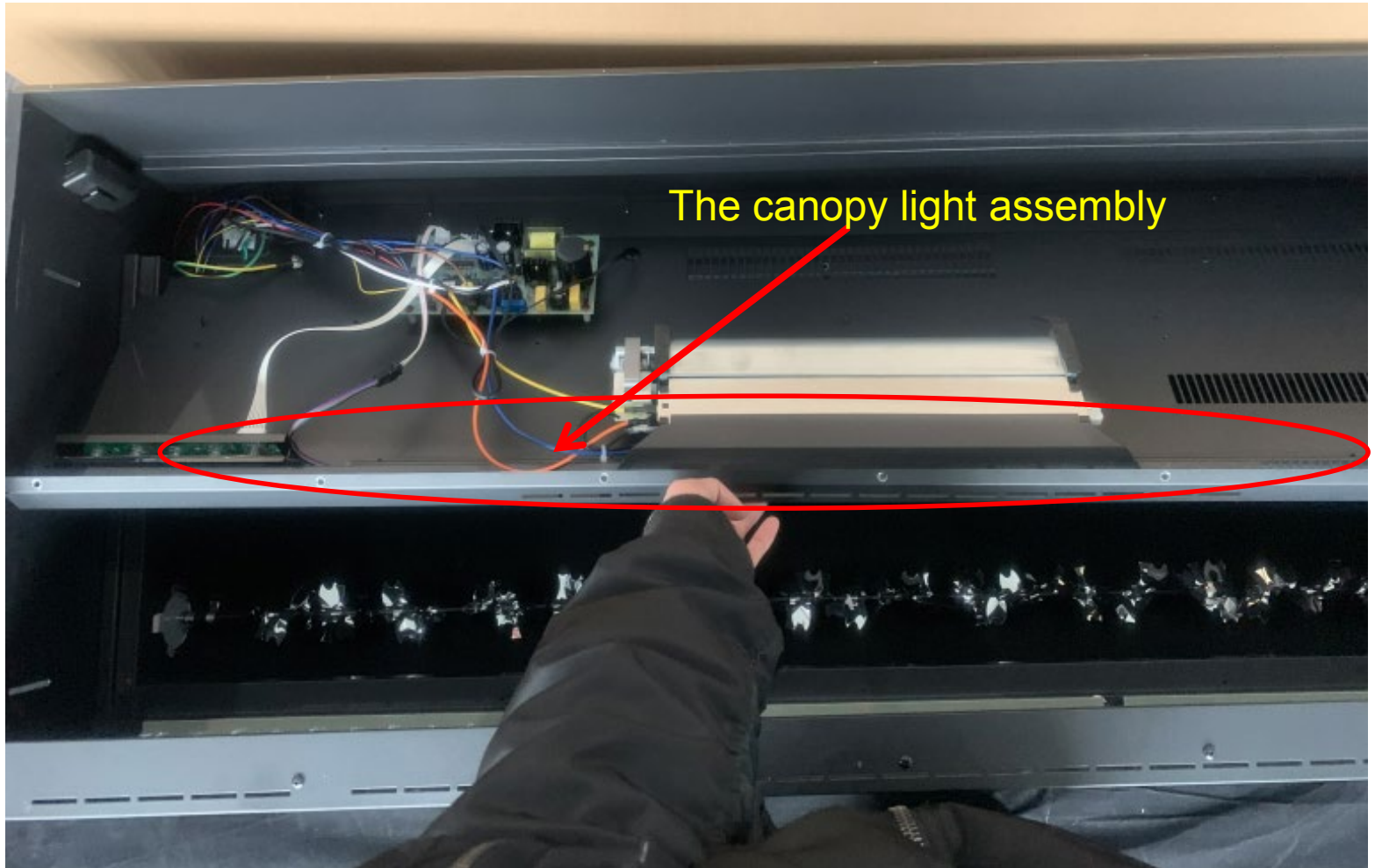


Step 2 Unplug the signal receiver from the PCB board and replace it with a new one.

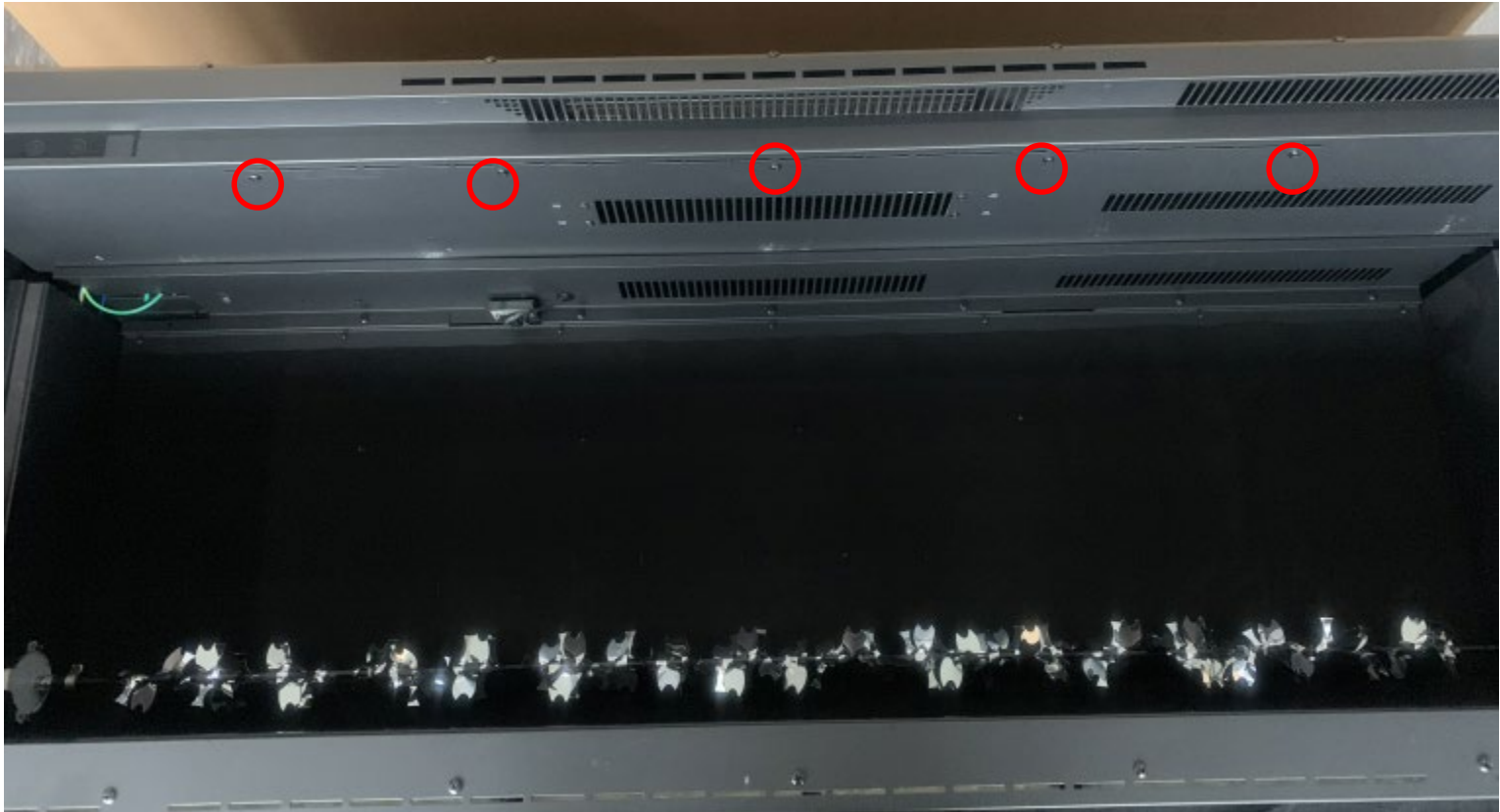


Replacing the Canopy light

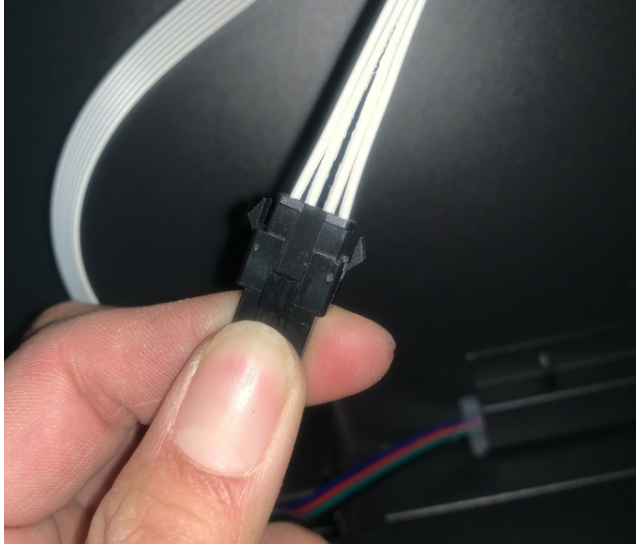
Follow steps 1 to 4 in Replace the heating element to remove the inner top panel.



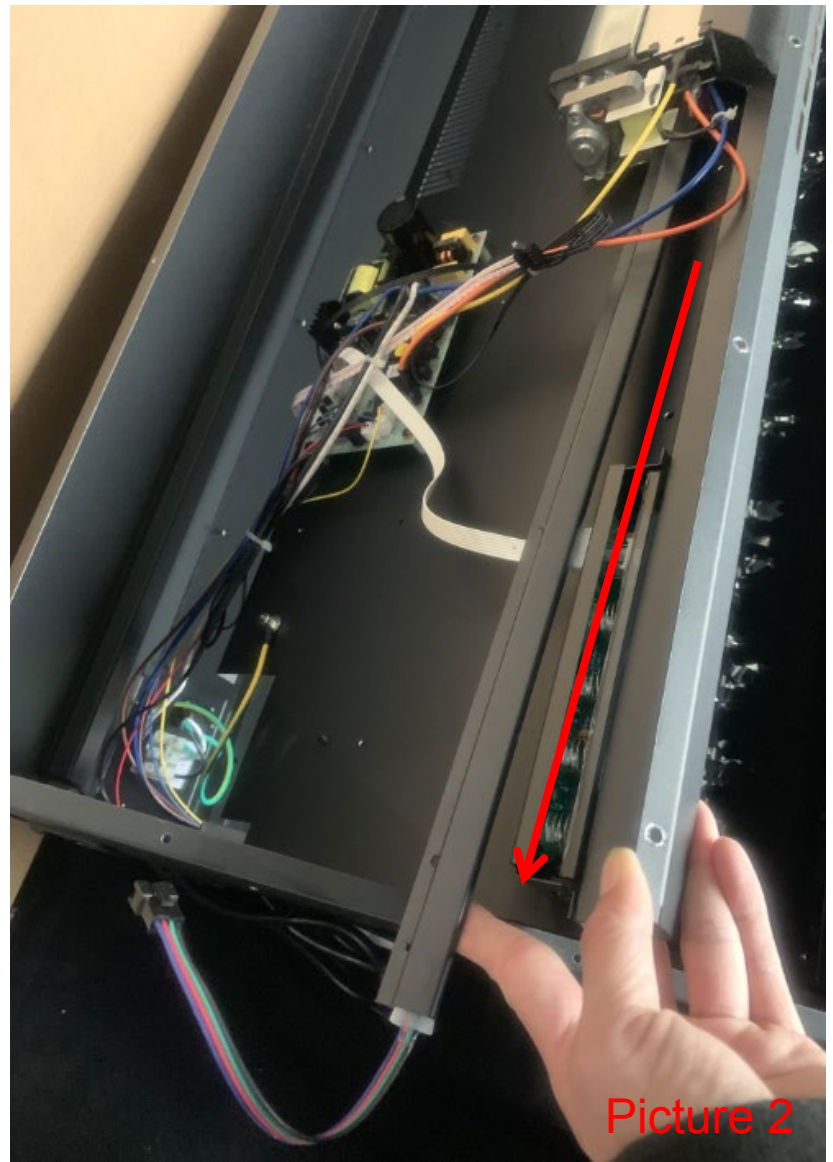
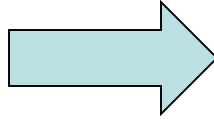
Step 1 Remove the screws circled in red to disconnect the canopy light assembly from the inner top panel.



Step 2



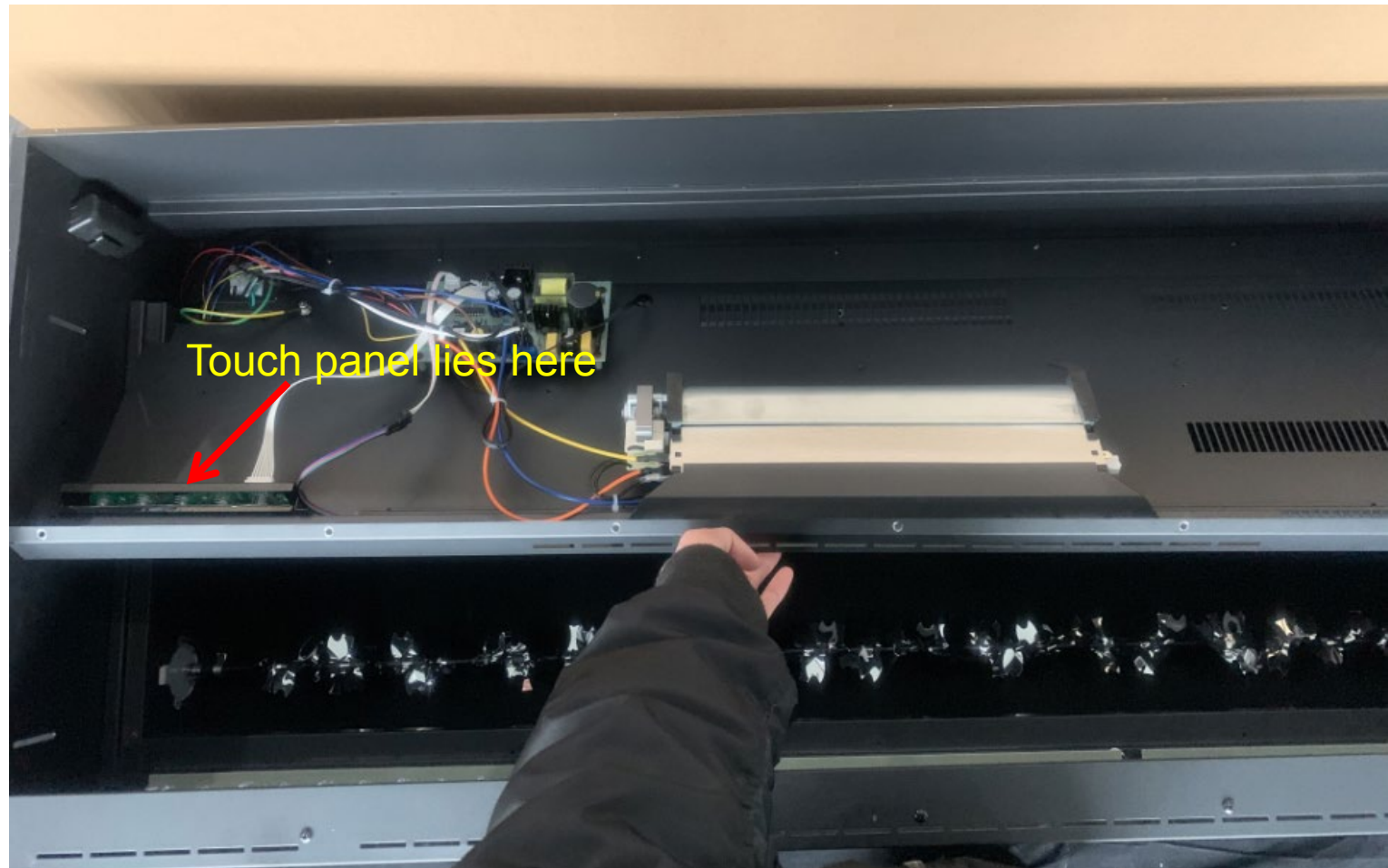
Picture 1



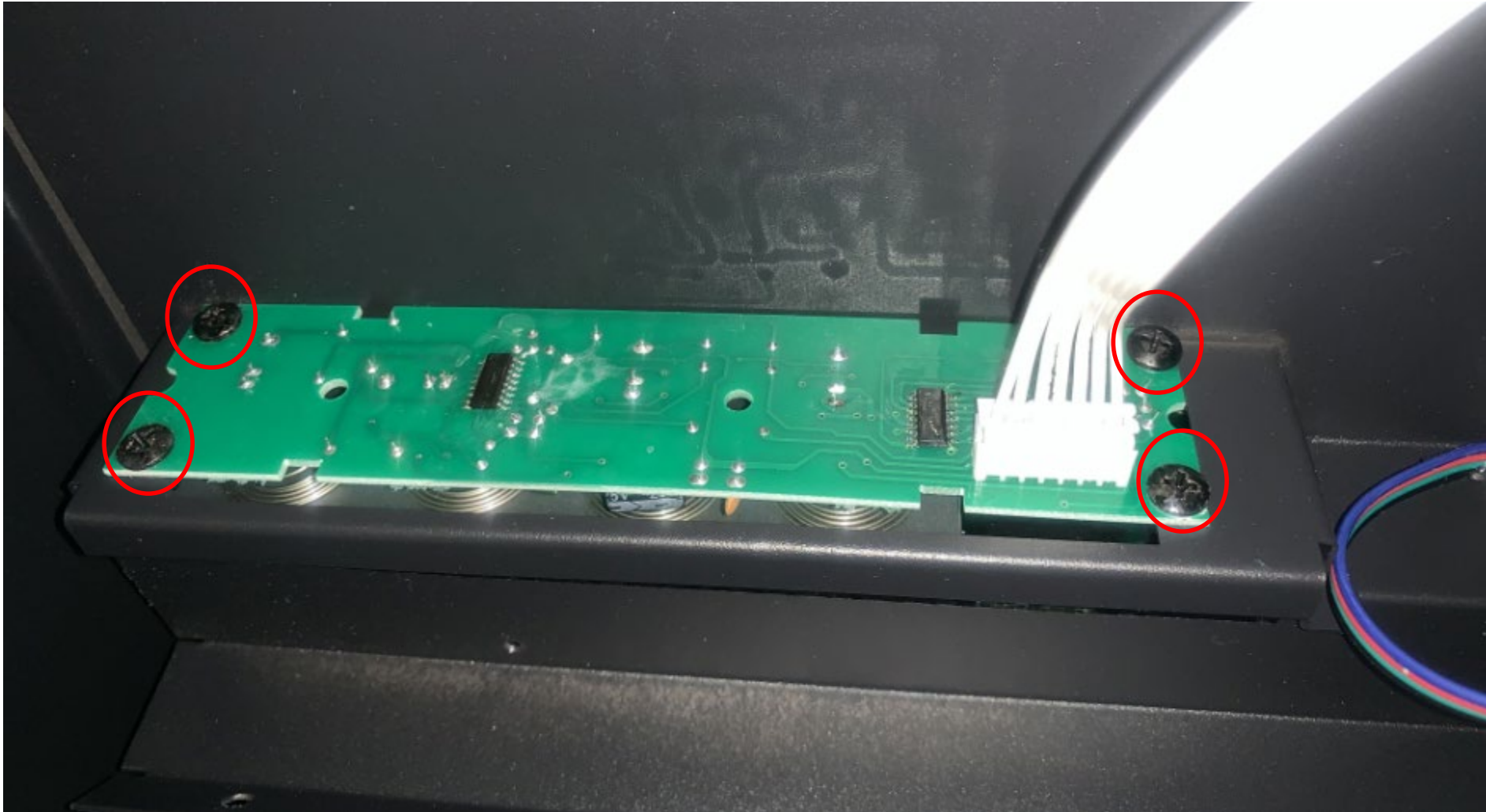
Unplug the canopy light from the PCB board and pull it out as shows in picture 2. Replace it with a new one.

Replacing the Touch Panel

Follow steps 1 to 4 in Replace the heating element to remove the inner top panel.



Step 1 Remove the screws circled in red to disconnect the touch panel from the inner top steel panel.



Unplug and replace it with a new touch panel .

